

For Research Use Only

KLHL14-Specific Polyclonal antibody, PBS Only

Catalog Number: 14849-1-PBS

Featured Product



Basic Information

Catalog Number:

14849-1-PBS

Concentration:

1 mg/ml

Source:

Rabbit

Isotype:

IgG

GenBank Accession Number:

NM_020805

GeneID (NCBI):

57565

UNIPROT ID:

Q9P2G3

Full Name:

kelch-like 14 (Drosophila)

Calculated MW:

70 kDa

Observed MW:

39-45 kDa

Purification Method:

Antigen affinity purification

Applications

Tested Applications:

WB, IHC, IF/ICC, Indirect ELISA

Species Specificity:

human, mouse, rat

Background Information

KLHL14, a member of the Kelch-like gene family, has six Kelch domains and is localized to the endoplasmic reticulum. KLHL14, a novel tumor suppressor, is a subunit of a ubiquitin ligase that associates with the endoplasmic reticulum-associated protein degradation (ERAD) machinery, regulating of B cell receptor-dependent NF- κ B signaling (PMID: 32127472). KLHL14 has two isoforms of 70kDa and 43kDa.

Storage

Storage:

Store at -80°C.

The product is shipped with ice packs. Upon receipt, store it immediately at -80°C

Storage Buffer:

PBS Only

For technical support and original validation data for this product please contact:

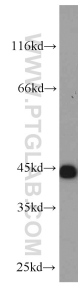
T: 4006900926

E: Proteintech-CN@ptglab.com

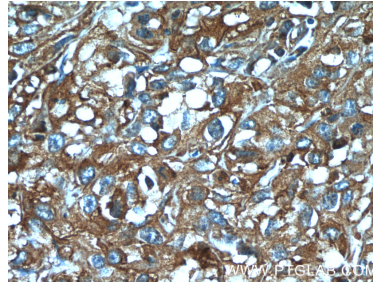
W: ptgcn.com

This product is exclusively available under Proteintech Group brand and is not available to purchase from any other manufacturer.

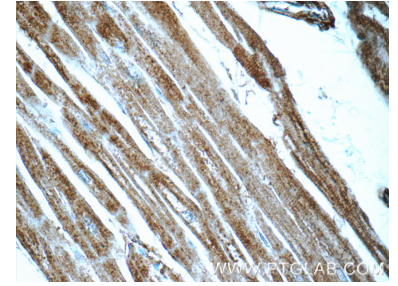
Selected Validation Data



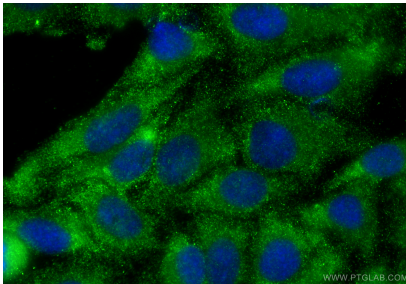
HeLa cells were subjected to SDS PAGE followed by western blot with 14849-1-AP (KLHL14-Specific antibody) at dilution of 1:1000 incubated at room temperature for 1.5 hours. This data was developed using the same antibody clone with 14849-1-PBS in a different storage buffer formulation.



Immunohistochemical analysis of paraffin-embedded human cervical cancer tissue slide using 14849-1-AP (KLHL14-Specific Antibody) at dilution of 1:50 (under 40x lens). This data was developed using the same antibody clone with 14849-1-PBS in a different storage buffer formulation.



Immunohistochemical analysis of paraffin-embedded human heart tissue slide using 14849-1-AP (KLHL14-Specific Antibody) at dilution of 1:50 (under 40x lens). This data was developed using the same antibody clone with 14849-1-PBS in a different storage buffer formulation.



Immunofluorescent analysis of (-20°C Ethanol) fixed HepG2 cells using KLHL14-Specific antibody (14849-1-AP) at dilution of 1:200 and CoraLite®488-Conjugated Goat Anti-Rabbit IgG(H+L) (SA00013-2). This data was developed using the same antibody clone with 14849-1-PBS in a different storage buffer formulation.