

For Research Use Only

KLHL14-Specific Polyclonal antibody

Catalog Number: 14849-1-AP

Featured Product

1 Publications



Basic Information

Catalog Number:

14849-1-AP

Concentration:

900 ug/ml

Source:

Rabbit

Isotype:

IgG

GenBank Accession Number:

NM_020805

GeneID (NCBI):

57565

UNIPROT ID:

Q9P2G3

Full Name:

kelch-like 14 (Drosophila)

Calculated MW:

70 kDa

Observed MW:

39-45 kDa

Purification Method:

Antigen affinity purification

Recommended Dilutions:

WB 1:500-1:2000

IHC 1:20-1:200

IF/ICC 1:50-1:500

Applications

Tested Applications:

WB, IHC, IF/ICC, ELISA

Cited Applications:

WB

Species Specificity:

human, mouse, rat

Cited Species:

human

Positive Controls:

WB: HeLa cells, mouse heart tissue, mouse testis tissue, mouse lung tissue, mouse liver tissue, SH-SY5Y cells, mouse brain tissue, mouse ovary tissue, HepG2 cells, rat brain tissue

IHC: human heart tissue, human cervical cancer tissue

IF/ICC: HepG2 cells,

Note-IHC: suggested antigen retrieval with *TE buffer pH 9.0*; (*) Alternatively, antigen retrieval may be performed with *citrate buffer pH 6.0*

Background Information

KLHL14, a member of the Kelch-like gene family, has six Kelch domains and is localized to the endoplasmic reticulum. KLHL14, a novel tumor suppressor, is a subunit of a ubiquitin ligase that associates with the endoplasmic reticulum-associated protein degradation (ERAD) machinery, regulating of B cell receptor-dependent NF- κ B signaling (PMID: 32127472). KLHL14 has two isoforms of 70kDa and 43kDa.

Notable Publications

Author	Pubmed ID	Journal	Application
Zheng Chen	33425096	Int J Clin Exp Pathol	WB

Storage

Storage:

Store at -20°C. Stable for one year after shipment.

Storage Buffer:

PBS with 0.02% sodium azide and 50% glycerol pH 7.3.

Aliquoting is unnecessary for -20°C storage

For technical support and original validation data for this product please contact:

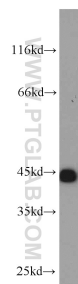
T: 4006900926

E: Proteintech-CN@ptglab.com

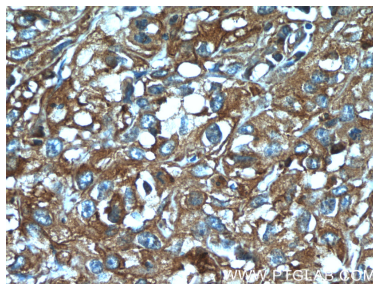
W: ptgcn.com

This product is exclusively available under Proteintech Group brand and is not available to purchase from any other manufacturer.

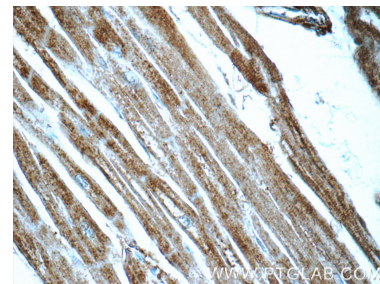
Selected Validation Data



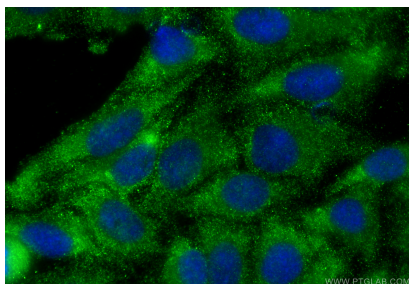
HeLa cells were subjected to SDS PAGE followed by western blot with 14849-1-AP (KLHL14-Specific antibody) at dilution of 1:1000 incubated at room temperature for 1.5 hours.



Immunohistochemical analysis of paraffin-embedded human cervical cancer tissue slide using 14849-1-AP (KLHL14-Specific Antibody) at dilution of 1:50 (under 40x lens).



Immunohistochemical analysis of paraffin-embedded human heart tissue slide using 14849-1-AP (KLHL14-Specific Antibody) at dilution of 1:50 (under 40x lens).



Immunofluorescent analysis of (-20°C Ethanol) fixed HepG2 cells using KLHL14-Specific antibody (14849-1-AP) at dilution of 1:200 and CoraLite®488-Conjugated Goat Anti-Rabbit IgG(H+L) (SA00013-2).