

SEC61B-Specific Polyclonal antibody

Catalog Number: 14846-1-AP

1 Publications

Basic Information

Catalog Number:

14846-1-AP

Size:

500 µg/ml

Source:

Rabbit

Isotype:

IgG

GenBank Accession Number:

NM_006808

GeneID (NCBI):

10952

UNIPROT ID:

P60468

Full Name:

Sec61 beta subunit

Calculated MW:

10 kDa

Observed MW:

10-15 kDa

Purification Method:

Antigen affinity purification

Recommended Dilutions:

WB 1:1000-1:4000

IHC 1:500-1:2000

IF-P 1:50-1:500

IF/ICC 1:500-1:2000

Applications

Tested Applications:

WB, IHC, IF/ICC, IF-P, ELISA

Cited Applications:

WB

Species Specificity:

human, mouse, rat

Cited Species:

human

Note-IHC: suggested antigen retrieval with TE buffer pH 9.0; (*) Alternatively, antigen retrieval may be performed with citrate buffer pH 6.0

Positive Controls:

WB: HEK-293 cells, HeLa cells, human kidney tissue, mouse kidney tissue, mouse liver tissue, rat kidney tissue

IHC: mouse liver tissue, human cervical cancer tissue, human liver tissue

IF-P: mouse pancreas tissue,

IF/ICC: HeLa cells,

Background Information

The heteromeric SEC61 complex is composed of alpha, beta and gamma subunits. Oligomers of the SEC61 complex form a transmembrane channel where proteins are translocated across and integrated into the ER membrane (PMID: 10212142). SEC61B is the beta subunit of the SEC61 complex. It has been reported that SEC61B facilitates cotranslational protein transport and interacts with the signal peptidase during translocation (PMID: 9585408).

Notable Publications

Author	Pubmed ID	Journal	Application
Mio Kawabata	33760868	PLoS Pathog	WB

Storage

Storage:

Store at -20°C. Stable for one year after shipment.

Storage Buffer:

PBS with 0.02% sodium azide and 50% glycerol pH 7.3.

Aliquoting is unnecessary for -20°C storage

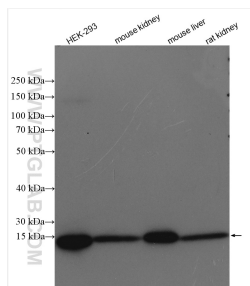
For technical support and original validation data for this product please contact:

T: 4006900926

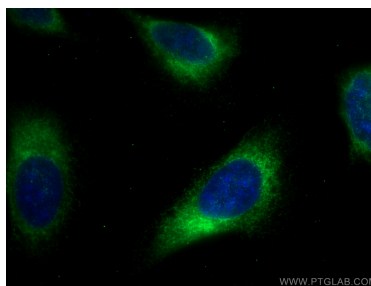
E: Proteintech-CN@ptglab.comW: ptgcn.com

This product is exclusively available under Proteintech Group brand and is not available to purchase from any other manufacturer.

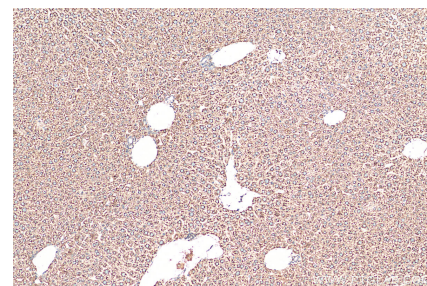
Selected Validation Data



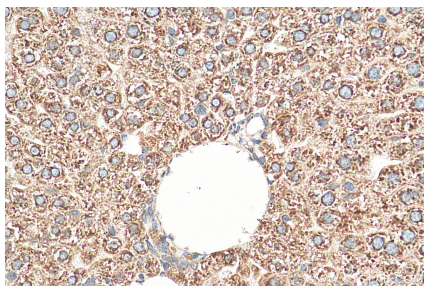
Various lysates were subjected to SDS PAGE followed by western blot with 14846-1-AP (SEC61B-Specific antibody) at dilution of 1:2000 incubated at room temperature for 1.5 hours.



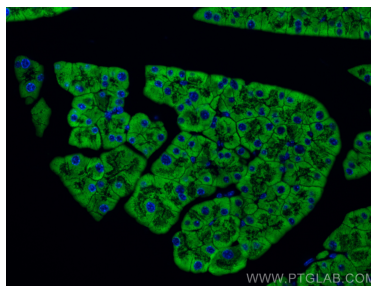
Immunofluorescent analysis of (-20°C Methanol) fixed HeLa cells using SEC61B-Specific antibody (14846-1-AP) at dilution of 1:1000 and CoraLite® 488-Conjugated AffiniPure Goat Anti-Rabbit IgG(H+L).



Immunohistochemical analysis of paraffin-embedded mouse liver tissue slide using 14846-1-AP (SEC61B-Specific antibody) at dilution of 1:1000 (under 10x lens). Heat mediated antigen retrieval with Tris-EDTA buffer (pH 9.0).



Immunohistochemical analysis of paraffin-embedded mouse liver tissue slide using 14846-1-AP (SEC61B-Specific antibody) at dilution of 1:1000 (under 40x lens). Heat mediated antigen retrieval with Tris-EDTA buffer (pH 9.0).



Immunofluorescent analysis of (4% PFA) fixed mouse pancreas tissue using SEC61B-Specific antibody (14846-1-AP) at dilution of 1:200 and CoraLite® 488-Conjugated AffiniPure Goat Anti-Rabbit IgG(H+L).