

For Research Use Only

Connexin-26 Polyclonal antibody

Catalog Number: 14842-1-AP

1 Publications



Basic Information

Catalog Number:

14842-1-AP

Size:

300 µg/ml

Source:

Rabbit

Isotype:

IgG

GenBank Accession Number:

NM_004004

GeneID (NCBI):

2706

UNIPROT ID:

P29033

Full Name:

gap junction protein, beta 2, 26kDa

Calculated MW:

26 kDa

Observed MW:

26 kDa

Purification Method:

Antigen affinity purification

Recommended Dilutions:

WB 1:500-1:2000

Applications

Tested Applications:

WB, ELISA

Cited Applications:

IF, WB

Species Specificity:

human, mouse

Cited Species:

human

Positive Controls:

WB : human heart tissue, mouse brain tissue

Background Information

The gap junctions were first characterized by electron microscopy as regionally specialized structures on plasma membranes of contacting adherent cells. These structures were shown to consist of cell-to-cell channels that facilitate the transfer of ions and small molecules between cells. The gap junction proteins, also known as connexins, purified from fractions of enriched gap junctions from different tissues differ. According to sequence similarities at the nucleotide and amino acid levels, the gap junction proteins are divided into two categories, alpha and beta. Connexin-26 (GJB2) is a beta class gap junction protein. Mutations in the gene for connexin-26 are responsible for as much as 50% of pre-lingual, recessive deafness.

Notable Publications

Author	Pubmed ID	Journal	Application
Stefania Monterisi	36107487	Elife	WB, IF

Storage

Storage:

Store at -20°C. Stable for one year after shipment.

Storage Buffer:

PBS with 0.02% sodium azide and 50% glycerol pH 7.3.

Aliquoting is unnecessary for -20°C storage

For technical support and original validation data for this product please contact:

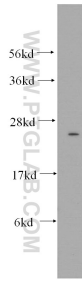
T: 4006900926

E: Proteintech-CN@ptglab.com

W: ptgcn.com

This product is exclusively available under Proteintech Group brand and is not available to purchase from any other manufacturer.

Selected Validation Data



human heart tissue were subjected to SDS PAGE followed by western blot with 14842-1-AP (Connexin-26 antibody) at dilution of 1:500 incubated at room temperature for 1.5 hours.