

For Research Use Only

# SLC25A6-Specific Polyclonal antibody

Catalog Number: 14841-1-AP

Featured Product

6 Publications



## Basic Information

### Catalog Number:

14841-1-AP

### Concentration:

450 ug/ml

### Source:

Rabbit

### Isotype:

IgG

### GenBank Accession Number:

NM\_001636

### GeneID (NCBI):

293

### UNIPROT ID:

P12236

### Full Name:

solute carrier family 25  
(mitochondrial carrier; adenine  
nucleotide translocator), member 6

### Calculated MW:

33 kDa

### Observed MW:

30-33 kDa

### Purification Method:

Antigen affinity purification

### Recommended Dilutions:

WB 1:500-1:2000

IP 0.5-4.0 ug for 1.0-3.0 mg of total  
protein lysate

IHC 1:20-1:200

IF/ICC 1:10-1:100

## Applications

### Tested Applications:

WB, IHC, IF/ICC, IP, ELISA

### Cited Applications:

WB, IHC, IF, CoIP

### Species Specificity:

human, mouse

### Cited Species:

human

**Note-IHC: suggested antigen retrieval with  
TE buffer pH 9.0; (\*) Alternatively, antigen  
retrieval may be performed with citrate  
buffer pH 6.0**

### Positive Controls:

**WB** : L02 cells, HEK-293 cells, human liver tissue,  
human heart tissue, human placenta tissue, HEK-293T  
cells

**IP** : mouse liver tissue,

**IHC** : human skeletal muscle tissue, human heart  
tissue, human kidney tissue, human liver tissue

**IF/ICC** : HepG2 cells, MCF-7 cells

## Background Information

SLC25A6, also known as ANT3 (adenine nucleotide translocase 3), is a member of the solute carrier family 25, specifically the mitochondrial carrier subfamily. As part of the mitochondrial carrier family, SLC25A6 plays a role in the mitochondrial energy production process by facilitating the exchange of metabolites necessary for oxidative phosphorylation (PMID: 23506884).

## Notable Publications

Author	Pubmed ID	Journal	Application
Ridhima Gomkale	32142709	Curr Biol	WB
Yi Hao	33602229	Cancer Cell Int	WB,IF
Sylvie Callegari	27718247	FEBS Lett	WB

## Storage

### Storage:

Store at -20°C. Stable for one year after shipment.

### Storage Buffer:

PBS with 0.02% sodium azide and 50% glycerol pH 7.3.

Aliquoting is unnecessary for -20°C storage

For technical support and original validation data for this product please contact:

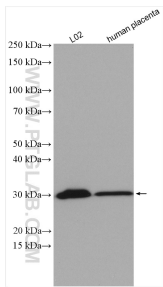
T: 4006900926

E: [Proteintech-CN@ptglab.com](mailto:Proteintech-CN@ptglab.com)

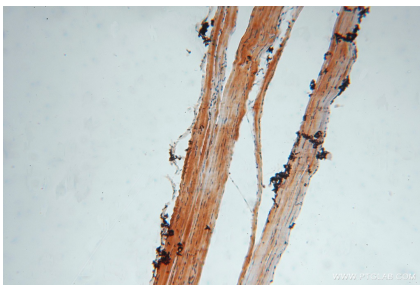
W: [ptgcn.com](http://ptgcn.com)

**This product is exclusively available under Proteintech Group brand and is not available to purchase from any other manufacturer.**

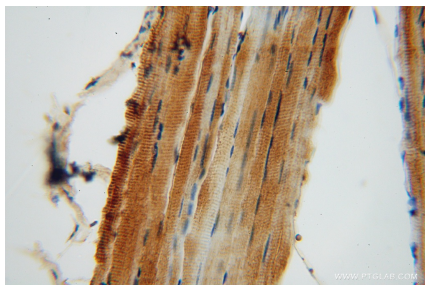
Selected Validation Data



Various lysates were subjected to SDS PAGE followed by western blot with 14841-1-AP (SLC25A6-Specific antibody) at dilution of 1:1000 incubated at room temperature for 1.5 hours.



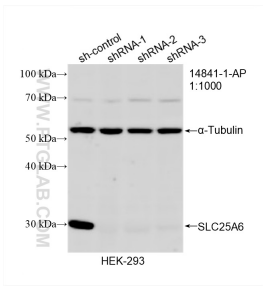
Immunohistochemical analysis of paraffin-embedded human skeletal muscle using 14841-1-AP (SLC25A6-Specific antibody) at dilution of 1:100 (under 10x lens).



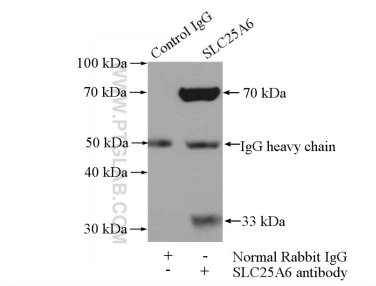
Immunohistochemical analysis of paraffin-embedded human skeletal muscle using 14841-1-AP (SLC25A6-Specific antibody) at dilution of 1:100 (under 40x lens).



Immunofluorescent analysis of HepG2 cells using 14841-1-AP (SLC25A6-Specific antibody) at dilution of 1:25 and Rhodamine-Goat anti-Rabbit IgG.



WB result of SLC25A6-Specific antibody (14841-1-AP; 1:1000; incubated at room temperature for 1.5 hours) with sh-Control and sh-SLC25A6-Specific transfected HEK-293 cells.



IP result of anti-SLC25A6-Specific (IP:14841-1-AP, 4ug; Detection:14841-1-AP 1:500) with mouse liver tissue lysate 4000ug.