

# ATF2-Specific Polyclonal antibody

Catalog Number: 14834-1-AP

Featured Product

12 Publications

## Basic Information

## Catalog Number:

14834-1-AP

## Size:

350 µg/ml

## Source:

Rabbit

## Isotype:

IgG

## GenBank Accession Number:

BC026175

## GeneID (NCBI):

1386

## UNIPROT ID:

P15336

## Full Name:

activating transcription factor 2

## Calculated MW:

55 kDa

## Observed MW:

70 kDa

## Purification Method:

Antigen affinity purification

## Recommended Dilutions:

WB 1:500-1:1000

IHC 1:200-1:800

## Applications

## Tested Applications:

IHC, WB, ELISA

## Cited Applications:

WB, IF, IHC

## Species Specificity:

human, mouse

## Cited Species:

human, mouse, rat

**Note-IHC: suggested antigen retrieval with TE buffer pH 9.0; (\*) Alternatively, antigen retrieval may be performed with citrate buffer pH 6.0**

## Positive Controls:

WB : HeLa cells, LNCaP cells, C2C12 cells

IHC : human breast cancer tissue,

## Background Information

ATF2, also named as CREB2 and CREBP1, contains one bZIP domain and one C2H2-type zinc finger. It belongs to the bZIP family. ATF2 binds to the cAMP-responsive element (CRE), an octameric palindrome. It forms a homodimer or a heterodimer with c-Jun and stimulates CRE-dependent transcription. It is also a histone acetyltransferase (HAT) that specifically acetylates histones H2B and H4 in vitro; thus it may represent a class of sequence-specific factors that activate transcription by direct effects on chromatin components. ATF2 binds DNA as a dimer and can form a homodimer in the absence of DNA. It binds through its N-terminal region to U1F1 which acts as a coactivator of ATF2 transcriptional activity. This antibody is a rabbit polyclonal antibody raised against a peptide mapping within human ATF2. The calculated molecular weight of ATF2 is 55 kDa, but the modified ATF2 protein is about 70 kDa (PMID: 18269766).

## Notable Publications

Author	Pubmed ID	Journal	Application
Fanpeng Zhao	25342750	J Biol Chem	WB
Xiaomei Liu	30524373	Front Endocrinol (Lausanne)	WB
Joshua E Burda	35614216	Nature	IHC

## Storage

## Storage:

Store at -20°C. Stable for one year after shipment.

## Storage Buffer:

PBS with 0.02% sodium azide and 50% glycerol pH 7.3.

Aliquoting is unnecessary for -20°C storage

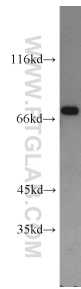
For technical support and original validation data for this product please contact:

T: 4006900926

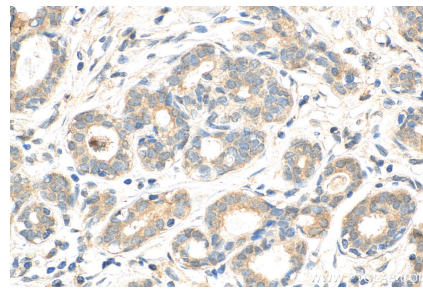
E: [Proteintech-CN@ptglab.com](mailto:Proteintech-CN@ptglab.com)W: [ptgcn.com](http://ptgcn.com)

**This product is exclusively available under Proteintech Group brand and is not available to purchase from any other manufacturer.**

## Selected Validation Data



HeLa cells were subjected to SDS PAGE followed by western blot with 14834-1-AP (ATF2-Specific antibody) at dilution of 1:600 incubated at room temperature for 1.5 hours.



Immunohistochemical analysis of paraffin-embedded human breast cancer tissue slide using 14834-1-AP (ATF2-Specific antibody) at dilution of 1:400 (under 40x lens). Heat mediated antigen retrieval with Tris-EDTA buffer (pH 9.0).