

For Research Use Only

# PIG3 Polyclonal antibody

Catalog Number: 14828-1-AP **1 Publications**



## Basic Information

Catalog Number:

14828-1-AP

Size:

453 µg/ml

Source:

Rabbit

Isotype:

IgG

Immunogen Catalog Number:

AG6618

GenBank Accession Number:

BC000474

GeneID (NCBI):

9540

UNIPROT ID:

Q53FA7

Full Name:

tumor protein p53 inducible protein 3

Calculated MW:

35 kDa

Observed MW:

34-36 kDa

Purification Method:

Antigen affinity purification

Recommended Dilutions:

WB 1:500-1:2000

IP 0.5-4.0 µg for 1.0-3.0 mg of total protein lysate

IHC 1:100-1:400

IF 1:10-1:100

## Applications

Tested Applications:

IF/ICC, IHC, IP, WB, ELISA

Cited Applications:

WB, IF

Species Specificity:

human

Cited Species:

human

**Note-IHC: suggested antigen retrieval with TE buffer pH 9.0; (\*) Alternatively, antigen retrieval may be performed with citrate buffer pH 6.0**

Positive Controls:

WB: HeLa cells, HepG2 cells, MCF-7 cells, SMMC-7721 cells

IP: MCF-7 cells,

IHC: human liver cancer tissue,

IF: HepG2 cells,

## Background Information

### Notable Publications

Author	Pubmed ID	Journal	Application
Rou Xie	34051669	Biomaterials	WB, IF

## Storage

Storage:

Store at -20°C. Stable for one year after shipment.

Storage Buffer:

PBS with 0.02% sodium azide and 50% glycerol pH 7.3.

Aliquoting is unnecessary for -20°C storage

For technical support and original validation data for this product please contact:

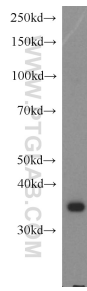
T: 4006900926

E: Proteintech-CN@ptglab.com

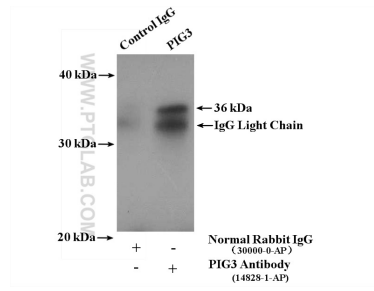
W: ptgcn.com

This product is exclusively available under Proteintech Group brand and is not available to purchase from any other manufacturer.

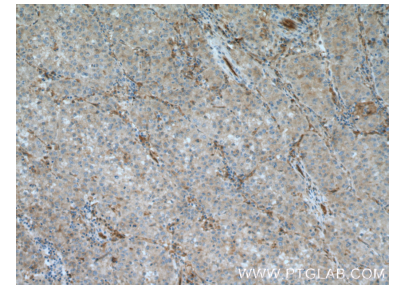
## Selected Validation Data



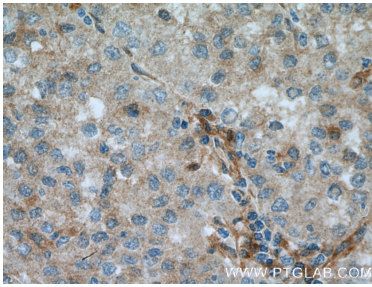
HeLa cells were subjected to SDS PAGE followed by western blot with 14828-1-AP (PIG3 antibody) at dilution of 1:1000 incubated at room temperature for 1.5 hours.



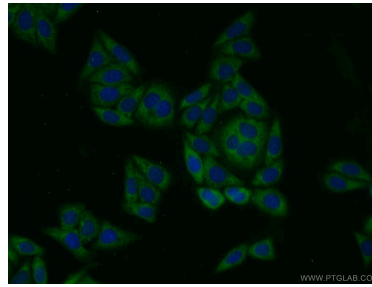
IP result of anti-PIG3 (IP:14828-1-AP, 4ug; Detection:14828-1-AP 1:500) with MCF-7 cells lysate 3200ug.



Immunohistochemical analysis of paraffin-embedded human liver cancer tissue slide using 14828-1-AP (PIG3 antibody at dilution of 1:200 (under 10x lens). Heat mediated antigen retrieval with Tris-EDTA buffer (pH 9.0).



Immunohistochemical analysis of paraffin-embedded human liver cancer tissue slide using 14828-1-AP (PIG3 antibody at dilution of 1:200 (under 40x lens). Heat mediated antigen retrieval with Tris-EDTA buffer (pH 9.0).



Immunofluorescent analysis of HepG2 cells using 14828-1-AP (PIG3 antibody) at dilution of 1:25 and Alexa Fluor 488-conjugated AffiniPure Goat Anti-Rabbit IgG(H+L).