

For Research Use Only

# PCYT2 Polyclonal antibody

Catalog Number: 14827-1-AP

Featured Product

4 Publications



## Basic Information

Catalog Number:

14827-1-AP

Size:

260 ug/ml

Source:

Rabbit

Isotype:

IgG

Immunogen Catalog Number:

AG6616

GenBank Accession Number:

BC000351

GeneID (NCBI):

5833

UNIPROT ID:

Q99447

Full Name:

phosphate cytidylyltransferase 2,  
ethanolamine

Calculated MW:

44 kDa

Observed MW:

44 kDa

Purification Method:

Antigen affinity purification

Recommended Dilutions:

WB 1:500-1:3000

IF/ICC 1:200-1:800

## Applications

Tested Applications:

WB, IF/ICC, ELISA

Cited Applications:

WB, IHC, IF

Species Specificity:

human

Cited Species:

human, mouse

Positive Controls:

WB : human liver tissue, HepG2 cells, MCF-7 cells

IF/ICC : HepG2 cells,

## Background Information

Ethanolamine-phosphate cytidylyltransferase (PCYT2) catalyzes the second step in the synthesis of phosphatidylethanolamine (PE) from ethanolamine via the CDP-ethanolamine pathway (PMID:9083101, PMID:31637422). Phosphatidylethanolamine is a dominant inner-leaflet phospholipid in cell membranes, where it plays a role in membrane function by structurally stabilizing membrane-anchored proteins, and participates in important cellular processes such as cell division, cell fusion, blood coagulation, and apoptosis (PMID:9083101).

## Notable Publications

Author	Pubmed ID	Journal	Application
Zhongliang Wei	36379282	Int J Biol Macromol	IF, WB
Shanshan Nie	31341492	Evid Based Complement Alternat Med	WB
Fumiko Umezawa	35743105	Int J Mol Sci	IHC

## Storage

Storage:

Store at -20°C. Stable for one year after shipment.

Storage Buffer:

PBS with 0.02% sodium azide and 50% glycerol pH 7.3.

Aliquoting is unnecessary for -20°C storage

For technical support and original validation data for this product please contact:

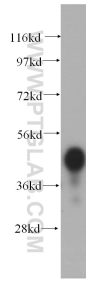
T: 4006900926

E: [Proteintech-CN@ptglab.com](mailto:Proteintech-CN@ptglab.com)

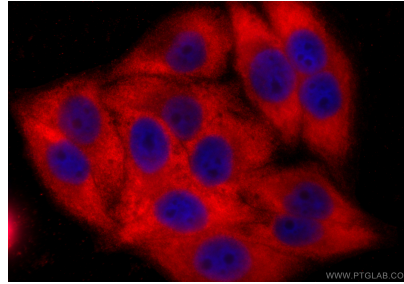
W: [ptgcn.com](http://ptgcn.com)

This product is exclusively available under Proteintech Group brand and is not available to purchase from any other manufacturer.

## Selected Validation Data



human liver tissue were subjected to SDS PAGE followed by western blot with 14827-1-AP (PCYT2 antibody) at dilution of 1:500 incubated at room temperature for 1.5 hours.



Immunofluorescent analysis of (-20°C Ethanol) fixed HepG2 cells using PCYT2 antibody (14827-1-AP) at dilution of 1:400 and CoraLite® 594-Conjugated Goat Anti-Rabbit IgG(H+L) (SA00013-4).