

For Research Use Only

# RPL35 Polyclonal antibody

Catalog Number: 14826-1-AP

3 Publications



## Basic Information

Catalog Number:

14826-1-AP

Source:

Rabbit

Isotype:

IgG

Immunogen Catalog Number:

AG6615

GenBank Accession Number:

BC000348

GeneID (NCBI):

11224

UNIPROT ID:

P42766

Full Name:

ribosomal protein L35

Calculated MW:

15 kDa

Observed MW:

15 kDa

Purification Method:

Antigen affinity purification

Recommended Dilutions:

WB: 1:200-1:1000

IHC: 1:500-1:2000

IF/ICC: 1:50-1:500

## Applications

Tested Applications:

WB, IHC, IF/ICC, ELISA

Cited Applications:

WB

Species Specificity:

human, mouse, rat

Cited Species:

human, mouse, monkey

**Note-IHC: suggested antigen retrieval with TE buffer pH 9.0; (\*) Alternatively, antigen retrieval may be performed with citrate buffer pH 6.0**

Positive Controls:

WB : mouse heart tissue, HeLa cells, mouse skeletal muscle tissue

IHC : rat pancreas tissue, human liver cancer tissue, human pancreas cancer tissue, human stomach cancer tissue, human thyroid cancer tissue, mouse pancreas tissue

IF/ICC : HeLa cells,

## Background Information

### Notable Publications

Author	Pubmed ID	Journal	Application
Qiancong Zhao	35099001	J Cell Sci	WB
Zhiqiang Li	40604925	Cancer Cell Int	WB
Fu-Yu Deng	39973136	Zool Res	WB

## Storage

Storage:

Store at -20°C. Stable for one year after shipment.

Storage Buffer:

PBS with 0.02% sodium azide and 50% glycerol, pH7.3

Aliquoting is unnecessary for -20°C storage

For technical support and original validation data for this product please contact:

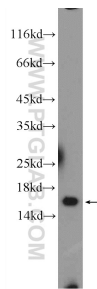
T: 4006900926

E: [Proteintech-CN@ptglab.com](mailto:Proteintech-CN@ptglab.com)

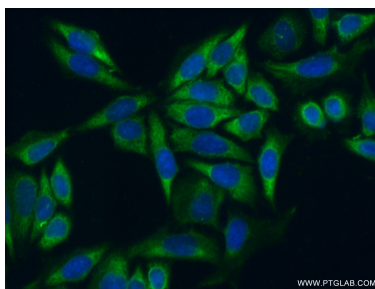
W: [ptgcn.com](http://ptgcn.com)

**This product is exclusively available under Proteintech Group brand and is not available to purchase from any other manufacturer.**

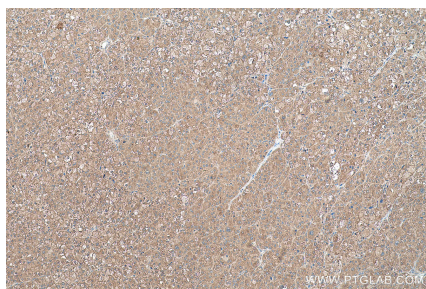
Selected Validation Data



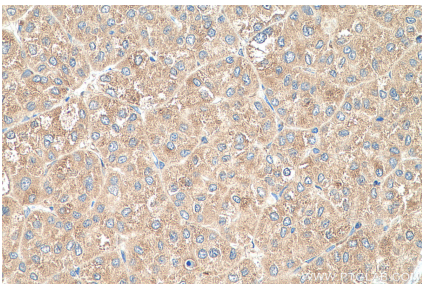
mouse heart tissue were subjected to SDS PAGE followed by western blot with 14826-1-AP (RPL35 Antibody) at dilution of 1:300 incubated at 4 degree celsius over night.



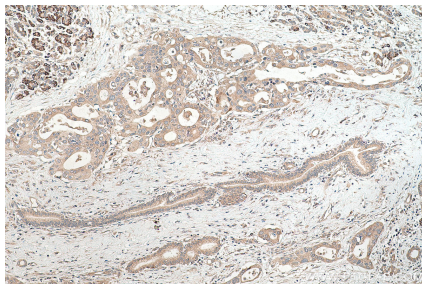
Immunofluorescent analysis of (-20°C Ethanol) fixed HeLa cells using 14826-1-AP (RPL35 antibody) at dilution of 1:50 and Alexa Fluor 488-conjugated Goat Anti-Rabbit IgG(H+L).



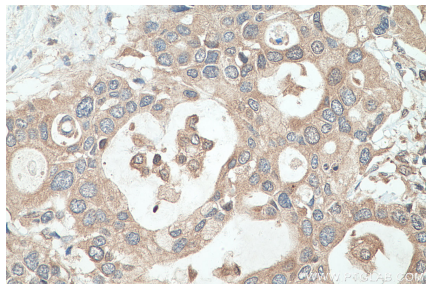
Immunohistochemical analysis of paraffin-embedded human liver cancer tissue slide using 14826-1-AP (RPL35 antibody) at dilution of 1:1000 (under 10x lens). Heat mediated antigen retrieval with Tris-EDTA buffer (pH 9.0).



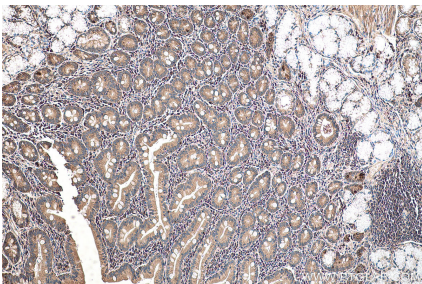
Immunohistochemical analysis of paraffin-embedded human liver cancer tissue slide using 14826-1-AP (RPL35 antibody) at dilution of 1:1000 (under 40x lens). Heat mediated antigen retrieval with Tris-EDTA buffer (pH 9.0).



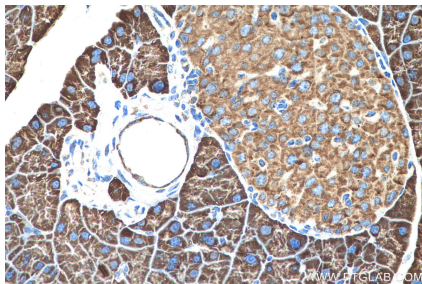
Immunohistochemical analysis of paraffin-embedded human pancreas cancer tissue slide using 14826-1-AP (RPL35 antibody) at dilution of 1:1000 (under 10x lens). Heat mediated antigen retrieval with Tris-EDTA buffer (pH 9.0).



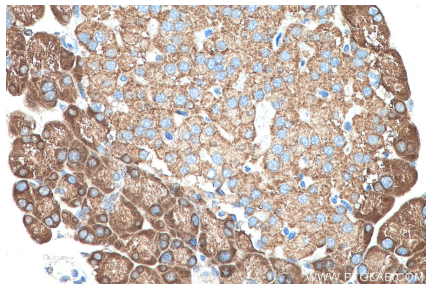
Immunohistochemical analysis of paraffin-embedded human pancreas cancer tissue slide using 14826-1-AP (RPL35 antibody) at dilution of 1:1000 (under 40x lens). Heat mediated antigen retrieval with Tris-EDTA buffer (pH 9.0).



Immunohistochemical analysis of paraffin-embedded human stomach cancer tissue slide using 14826-1-AP (RPL35 antibody) at dilution of 1:1000 (under 10x lens). Heat mediated antigen retrieval with Tris-EDTA buffer (pH 9.0).



Immunohistochemical analysis of paraffin-embedded mouse pancreas tissue slide using 14826-1-AP (RPL35 antibody) at dilution of 1:1000 (under 40x lens). Heat mediated antigen retrieval with Tris-EDTA buffer (pH 9.0).



Immunohistochemical analysis of paraffin-embedded rat pancreas tissue slide using 14826-1-AP (RPL35 antibody) at dilution of 1:1000 (under 40x lens). Heat mediated antigen retrieval with Tris-EDTA buffer (pH 9.0).