

For Research Use Only

# GIPC1 Polyclonal antibody

Catalog Number: 14822-1-AP

Featured Product

12 Publications



## Basic Information

### Catalog Number:

14822-1-AP

### Concentration:

900 ug/ml

### Source:

Rabbit

### Isotype:

IgG

### Immunogen Catalog Number:

AG6597

### GenBank Accession Number:

BC000410

### GeneID (NCBI):

10755

### UNIPROT ID:

O14908

### Full Name:

GIPC PDZ domain containing family, member 1

### Calculated MW:

36 kDa

### Observed MW:

42 kDa

### Purification Method:

Antigen affinity purification

### Recommended Dilutions:

WB 1:600-1:4000

IP 0.5-4.0 ug for 1.0-3.0 mg of total protein lysate

IHC 1:50-1:500

IF/ICC 1:200-1:800

## Applications

### Tested Applications:

WB, IHC, IF/ICC, IP, ELISA

### Cited Applications:

WB, IHC, IF

### Species Specificity:

human, mouse, rat

### Cited Species:

human, mouse

**Note-IHC: suggested antigen retrieval with TE buffer pH 9.0; (\*) Alternatively, antigen retrieval may be performed with citrate buffer pH 6.0**

### Positive Controls:

**WB** : HepG2 cells, mouse skeletal muscle tissue, mouse brain tissue, rat brain tissue

**IP** : mouse brain tissue,

**IHC** : human breast cancer tissue,

**IF/ICC** : HepG2 cells, A2780 cells

## Background Information

GAIP interacting protein C terminus, member 1(GIPC1), also known as PDZ domain-containing protein GIPC1, is a cytoplasmic protein that also localizes to the peripheral membrane, acting as an adaptor protein linking receptor interactions to intracellular signaling pathways, including cell cycle regulation, and expression has been associated with some cancers (PMID: 19175293, 26757732). This antibody is specific to GIPC1 with a band at 42 kDa (PMID: 18721486).

## Notable Publications

Author	Pubmed ID	Journal	Application
Yong Liu	34676980	CNS Neurosci Ther	WB
Jianwen Deng	32413282	Am J Hum Genet	IF
Jorge Carretero-Ortega	31050647	Elife	WB

## Storage

### Storage:

Store at -20°C. Stable for one year after shipment.

### Storage Buffer:

PBS with 0.02% sodium azide and 50% glycerol

Aliquoting is unnecessary for -20°C storage

For technical support and original validation data for this product please contact:

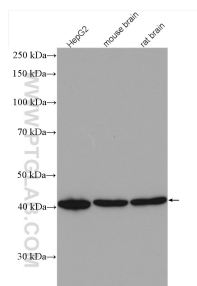
T: 4006900926

E: [Proteintech-CN@ptglab.com](mailto:Proteintech-CN@ptglab.com)

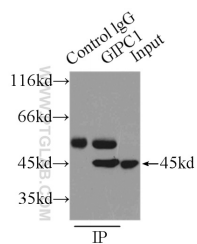
W: [ptgcn.com](http://ptgcn.com)

**This product is exclusively available under Proteintech Group brand and is not available to purchase from any other manufacturer.**

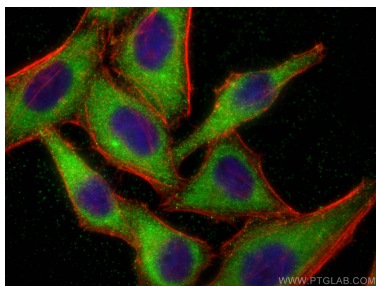
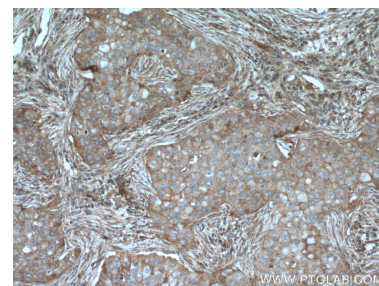
## Selected Validation Data



Various lysates were subjected to SDS PAGE followed by western blot with 14822-1-AP (GIPC1 antibody) at dilution of 1:3000 incubated at room temperature for 1.5 hours.



IP result of anti-GIPC1 (IP:14822-1-AP, 4ug; Detection:14822-1-AP 1:500) with mouse brain tissue lysate 9500ug.



Immunofluorescent analysis of (-20°C Ethanol) fixed HepG2 cells using GIPC1 antibody (14822-1-AP) at dilution of 1:400 and CoraLite®488-Conjugated AffiniPure Goat Anti-Rabbit IgG(H+L) (SA00013-2), CL594-phalloidin (red).