

For Research Use Only

# GPR37/Pael-R Polyclonal antibody

Catalog Number: 14820-1-AP

Featured Product

9 Publications



## Basic Information

<b>Catalog Number:</b> 14820-1-AP	<b>GenBank Accession Number:</b> BC040007	<b>Purification Method:</b> Antigen affinity purification
<b>Size:</b> 700 ug/ml	<b>GeneID (NCBI):</b> 2861	<b>Recommended Dilutions:</b> WB 1:500-1:3200 IHC 1:50-1:500 IF-P 1:50-1:500 IF/ICC 1:50-1:500
<b>Source:</b> Rabbit	<b>UNIPROT ID:</b> O15354	
<b>Isotype:</b> IgG	<b>Full Name:</b> G protein-coupled receptor 37 (endothelin receptor type B-like)	
<b>Immunogen Catalog Number:</b> AG6591	<b>Calculated MW:</b> 67 kDa	
	<b>Observed MW:</b> 50-55 kDa	

## Applications

<b>Tested Applications:</b> WB, IHC, IF/ICC, IF-P, ELISA	<b>Positive Controls:</b> WB : mouse brain tissue, IHC : mouse brain tissue, IF-P : mouse brain tissue, IF/ICC : HeLa cells,
<b>Cited Applications:</b> WB, IF	
<b>Species Specificity:</b> human, mouse	
<b>Cited Species:</b> human, mouse	
<b>Note-IHC: suggested antigen retrieval with TE buffer pH 9.0; (*) Alternatively, antigen retrieval may be performed with citrate buffer pH 6.0</b>	

## Background Information

The orphan G protein-coupled receptor GPR37, also known as PAELR (parkin-associated endothelin receptor-like receptor) or ETBR-LP-1 (endothelin B receptor-like protein 1), is a 613 aa, multi-pass membrane protein predominantly expressed in the brain. It is a substrate of parkin (PARK2). When overexpressed in cells, GPR37 tends to become insoluble, unfolded, and ubiquitinated in vivo. Accumulation of the unfolded protein may lead to dopaminergic neuronal death in juvenile Parkinson disease (JPD). This antibody recognizes endogenous GPR37, which migrates as an approximately 50-55 kDa band in SDS-PAGE (PMID:17519329).

## Notable Publications

Author	Pubmed ID	Journal	Application
Fei He	36194973	Phytomedicine	IF,WB
Beihui Liu	30260505	Glia	WB
Birgit S Berger	28341812	EMBO Rep	WB,IF

## Storage

**Storage:**  
Store at -20°C. Stable for one year after shipment.  
**Storage Buffer:**  
PBS with 0.02% sodium azide and 50% glycerol pH 7.3.  
Aliquoting is unnecessary for -20°C storage

For technical support and original validation data for this product please contact:

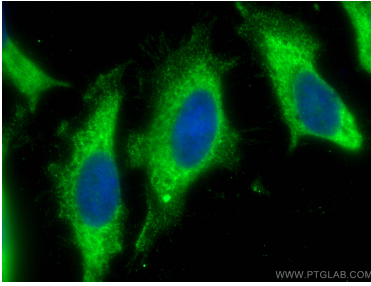
T: 4006900926

E: Proteintech-CN@ptglab.com

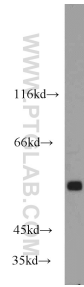
W: ptgcn.com

This product is exclusively available under Proteintech Group brand and is not available to purchase from any other manufacturer.

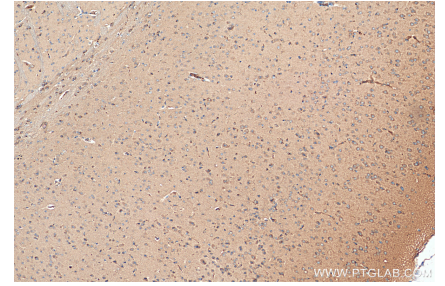
## Selected Validation Data



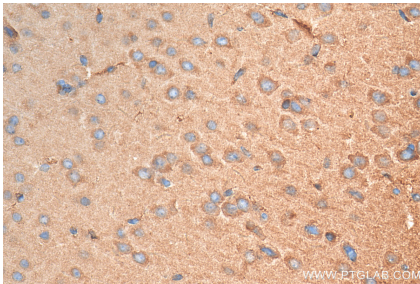
Immunofluorescent analysis of (-20°C Methanol) fixed HeLa cells using GPR37/Pael-R antibody (14820-1-AP) at dilution of 1:100 and CoraLite@488-Conjugated AffiniPure Goat Anti-Rabbit IgG(H+L).



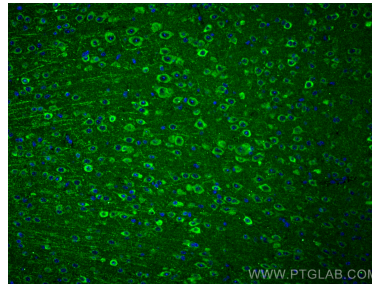
mouse brain tissue were subjected to SDS PAGE followed by western blot with 14820-1-AP (GPR37/Pael-R antibody) at dilution of 1:1600 incubated at room temperature for 1.5 hours.



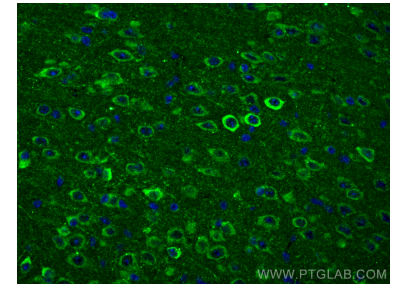
Immunohistochemical analysis of paraffin-embedded mouse brain tissue slide using 14820-1-AP (GPR37/Pael-R antibody) at dilution of 1:200 (under 10x lens). Heat mediated antigen retrieval with Tris-EDTA buffer (pH 9.0).



Immunohistochemical analysis of paraffin-embedded mouse brain tissue slide using 14820-1-AP (GPR37/Pael-R antibody) at dilution of 1:200 (under 40x lens). Heat mediated antigen retrieval with Tris-EDTA buffer (pH 9.0).



Immunofluorescent analysis of (4% PFA) fixed mouse brain tissue using GPR37/Pael-R antibody (14820-1-AP) at dilution of 1:200 and CoraLite@488-Conjugated AffiniPure Goat Anti-Rabbit IgG(H+L).



Immunofluorescent analysis of (4% PFA) fixed mouse brain tissue using GPR37/Pael-R antibody (14820-1-AP) at dilution of 1:200 and CoraLite@488-Conjugated AffiniPure Goat Anti-Rabbit IgG(H+L).