

For Research Use Only

ARD1A Polyclonal antibody

Catalog Number: 14803-1-AP

5 Publications



Basic Information

Catalog Number:

14803-1-AP

Size:

450 ug/ml

Source:

Rabbit

Isotype:

IgG

Immunogen Catalog Number:

AG6519

GenBank Accession Number:

BC000308

GeneID (NCBI):

8260

UNIPROT ID:

P41227

Full Name:

ARD1 homolog A, N-acetyltransferase (S. cerevisiae)

Calculated MW:

26 kDa

Observed MW:

26 kDa

Purification Method:

Antigen affinity purification

Recommended Dilutions:

WB 1:1000-1:6000

IP 0.5-4.0 ug for 1.0-3.0 mg of total protein lysate

IHC 1:50-1:500

IF/ICC 1:50-1:500

Applications

Tested Applications:

WB, IHC, IF/ICC, IP, ELISA

Cited Applications:

WB, IHC

Species Specificity:

human, mouse, rat

Cited Species:

human, mouse, rat, yeast

Note-IHC: suggested antigen retrieval with TE buffer pH 9.0; (*) Alternatively, antigen retrieval may be performed with citrate buffer pH 6.0

Positive Controls:

WB : HL-60 cells, mouse spleen tissue, HeLa cells, MCF-7 cells

IP : MCF-7 cells,

IHC : human breast cancer tissue,

IF/ICC : HeLa cells,

Background Information

Notable Publications

Author	Pubmed ID	Journal	Application
Max J Dörfel	27668839	Yeast	WB
Hyaee Yon Kweon	34355692	Elife	WB
Kaifeng Niu	39742570	Redox Biol	WB

Storage

Storage:

Store at -20°C. Stable for one year after shipment.

Storage Buffer:

PBS with 0.02% sodium azide and 50% glycerol pH 7.3.

Aliquoting is unnecessary for -20°C storage

For technical support and original validation data for this product please contact:

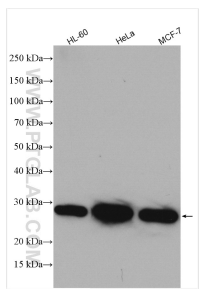
T: 4006900926

E: Proteintech-CN@ptglab.com

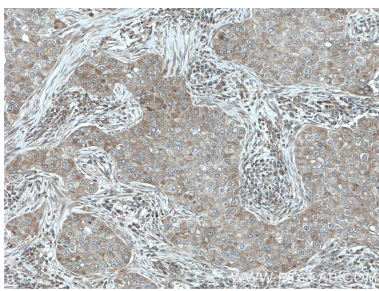
W: ptgcn.com

This product is exclusively available under Proteintech Group brand and is not available to purchase from any other manufacturer.

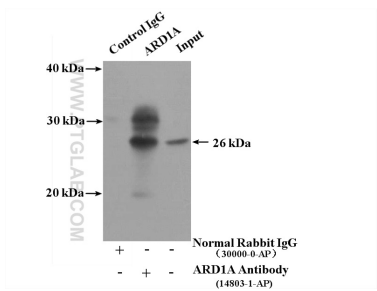
Selected Validation Data



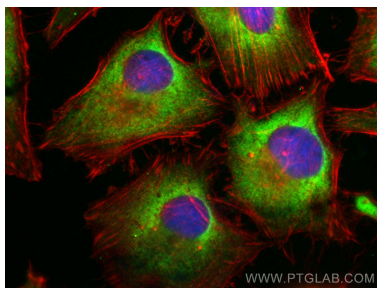
Various lysates were subjected to SDS PAGE followed by western blot with 14803-1-AP (ARD1A antibody) at dilution of 1:3000 incubated at room temperature for 1.5 hours.



Immunohistochemical analysis of paraffin-embedded human breast cancer tissue slide using 14803-1-AP (ARD1A antibody) at dilution of 1:200 (under 10x lens. Heat mediated antigen retrieval with Tris-EDTA buffer (pH 9.0).



IP result of anti-ARD1A (IP:14803-1-AP, 4ug; Detection:14803-1-AP 1:500) with MCF-7 cells lysate 3200ug.



Immunofluorescent analysis of (-20°C Ethanol) fixed HeLa cells using ARD1A antibody (14803-1-AP) at dilution of 1:200 and CoraLite®488-Conjugated AffiniPure Goat Anti-Rabbit IgG(H+L) (SA00013-2), CL594-phalloidin (red).