

For Research Use Only

CRIP2 Polyclonal antibody

Catalog Number: 14801-1-AP **1 Publications**



Basic Information

Catalog Number:

14801-1-AP

Size:

450 µg/ml

Source:

Rabbit

Isotype:

IgG

Immunogen Catalog Number:

AG6515

GenBank Accession Number:

BC000434

GeneID (NCBI):

1397

UNIPROT ID:

P52943

Full Name:

cysteine-rich protein 2

Calculated MW:

22 kDa

Observed MW:

23-29 kDa

Purification Method:

Antigen affinity purification

Recommended Dilutions:

WB 1:500-1:3000

IF 1:200-1:800

Applications

Tested Applications:

WB, IF/ICC, ELISA

Cited Applications:

WB, IP, IF

Species Specificity:

human, mouse, rat

Cited Species:

rat

Positive Controls:

WB : mouse heart tissue, HeLa cells, MCF-7 cells, mouse brain tissue, mouse lung tissue

IF : HeLa cells,

Background Information

Notable Publications

Author	Pubmed ID	Journal	Application
Alzbeta Hulikova	35357563	Basic Res Cardiol	WB,IF,IP

Storage

Storage:

Store at -20°C. Stable for one year after shipment.

Storage Buffer:

PBS with 0.02% sodium azide and 50% glycerol pH 7.3.

Aliquoting is unnecessary for -20°C storage

For technical support and original validation data for this product please contact:

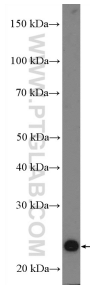
T: 4006900926

E: Proteintech-CN@ptglab.com

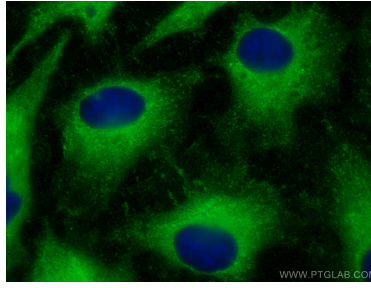
W: ptgcn.com

This product is exclusively available under Proteintech Group brand and is not available to purchase from any other manufacturer.

Selected Validation Data



mouse heart tissue were subjected to SDS PAGE followed by western blot with 14801-1-AP (CRIP2 Antibody) at dilution of 1:1500 incubated at room temperature for 1.5 hours.



Immunofluorescent analysis of (-20°C Methanol) fixed HeLa cells using CRIP2 antibody (14801-1-AP) at dilution of 1:400 and CoraLite® 488-Conjugated AffiniPure Goat Anti-Rabbit IgG(H+L).