

For Research Use Only

# SNRPD2 Polyclonal antibody

Catalog Number: 14789-1-AP

1 Publications



## Basic Information

Catalog Number:

14789-1-AP

Size:

400 µg/ml

Source:

Rabbit

Isotype:

IgG

Immunogen Catalog Number:

AG6443

GenBank Accession Number:

BC000486

GeneID (NCBI):

6633

UNIPROT ID:

P62316

Full Name:

small nuclear ribonucleoprotein D2  
polypeptide 16.5kDa

Calculated MW:

14 kDa

Observed MW:

14-16 kDa

Purification Method:

Antigen affinity purification

Recommended Dilutions:

WB 1:500-1:2400

IHC 1:20-1:200

## Applications

Tested Applications:

IHC, WB, ELISA

Cited Applications:

WB

Species Specificity:

human

Cited Species:

human

**Note-IHC: suggested antigen retrieval with  
TE buffer pH 9.0; (\*) Alternatively, antigen  
retrieval may be performed with citrate  
buffer pH 6.0**

Positive Controls:

WB : A2780 cells, A549 cells, HL-60 cells

IHC : human skin tissue, human lung cancer tissue,  
human lung tissue

## Background Information

Systemic lupus erythematosus is characterized by antibodies to a variety of intracellular self-antigens, such as dsDNA and Sm, and these serve as hallmarks in the diagnosis of systemic autoimmune diseases. SNRPD2 is one of Sm protein, and is required for pre-mRNA splicing, snRNP biogenesis.

## Notable Publications

Author	Pubmed ID	Journal	Application
Sikandar Azam	31107149	RNA Biol	WB

## Storage

Storage:

Store at -20°C. Stable for one year after shipment.

Storage Buffer:

PBS with 0.02% sodium azide and 50% glycerol pH 7.3.

Aliquoting is unnecessary for -20°C storage

For technical support and original validation data for this product please contact:

T: 4006900926

E: [Proteintech-CN@ptglab.com](mailto:Proteintech-CN@ptglab.com)

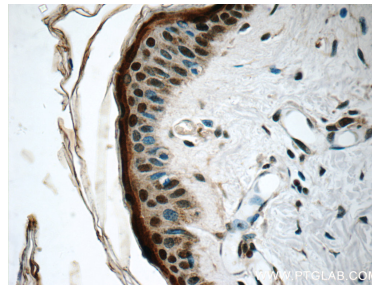
W: [ptgcn.com](http://ptgcn.com)

This product is exclusively available under Proteintech Group brand and is not available to purchase from any other manufacturer.

## Selected Validation Data



A2780 cells were subjected to SDS PAGE followed by western blot with 14789-1-AP (SNRPD2 antibody) at dilution of 1:500 incubated at room temperature for 1.5 hours.



Immunohistochemical analysis of paraffin-embedded human skin tissue slide using 14789-1-AP (SNRPD2 Antibody) at dilution of 1:50.