

For Research Use Only

CAMKV Polyclonal antibody, PBS Only

Catalog Number:14788-1-PBS



Basic Information

Catalog Number:

14788-1-PBS

Source:

Rabbit

Isotype:

IgG

Immunogen Catalog Number:

AG6438

GenBank Accession Number:

BC000497

GeneID (NCBI):

79012

UNIPROT ID:

Q8NCB2

Full Name:

CaM kinase-like vesicle-associated

Calculated MW:

54 kDa

Observed MW:

54-75 kDa

Purification Method:

Antigen affinity purification

Applications

Tested Applications:

WB, IF-P, IP, Indirect ELISA

Species Specificity:

human, mouse, rat

Background Information

CAMKV(CaM kinase-like vesicle-associated protein) is also named as 1G5,VACAMKL and belongs to the CAMK Ser/Thr protein kinase family. The CAMKV protein, which accumulates predominantly during postnatal development, binds to calmodulin in the presence of calcium. It is detected only in the CNS, is absent from cerebellum, but is detected in most other brain regions, especially regions of the cortex. The protein is predominantly detected in association with the plasma membrane of somatic cell and in neurites, both axons and dendrites, and is frequently observed in active zones, usually associated with vesicle-like structures. Its sequence suggests that 1G5 may be membrane associated(PMID:8283228).

Storage

Storage:

Store at -80°C.

The product is shipped with ice packs. Upon receipt, store it immediately at -80°C

Storage Buffer:

PBS only, pH7.3

For technical support and original validation data for this product please contact:

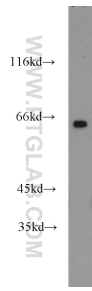
T: 4006900926

E: Proteintech-CN@ptglab.com

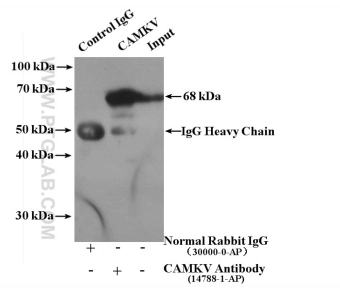
W: ptgcn.com

This product is exclusively available under Proteintech Group brand and is not available to purchase from any other manufacturer.

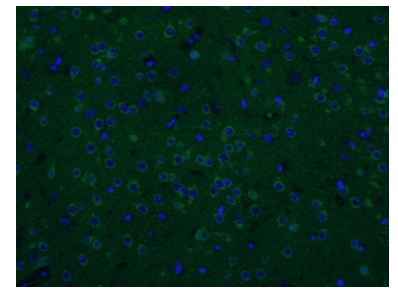
Selected Validation Data



mouse brain tissue were subjected to SDS PAGE followed by western blot with 14788-1-AP (CAMKV antibody) at dilution of 1:1200 incubated at room temperature for 1.5 hours. This data was developed using the same antibody clone with 14788-1-PBS in a different storage buffer formulation.



IP result of anti-CAMKV (IP:14788-1-AP, 4ug; Detection:14788-1-AP 1:500) with mouse brain tissue lysate 4000ug. This data was developed using the same antibody clone with 14788-1-PBS in a different storage buffer formulation.



Immunofluorescent analysis of (4% PFA) fixed mouse brain tissue using 14788-1-AP (CAMKV antibody) at dilution of 1:50 and CoraLite488-Conjugated AffiniPure Goat Anti-Rabbit IgG(H+L). This data was developed using the same antibody clone with 14788-1-PBS in a different storage buffer formulation.