

For Research Use Only

SMTNL2 Polyclonal antibody

Catalog Number: 14782-1-AP



Basic Information

Catalog Number:

14782-1-AP

Size:

450 µg/ml

Source:

Rabbit

Isotype:

IgG

Immunogen Catalog Number:

AG6395

GenBank Accession Number:

BC112177

GeneID (NCBI):

342527

UNIPROT ID:

Q2TALS

Full Name:

smoothelin-like 2

Calculated MW:

50 kDa

Observed MW:

68-70 kDa

Purification Method:

Antigen affinity purification

Recommended Dilutions:

WB 1:500-1:3000

IP 0.5-4.0 µg for 1.0-3.0 mg of total protein lysate

IF 1:10-1:100

Applications

Tested Applications:

IF/ICC, IP, WB, ELISA

Species Specificity:

human, mouse, rat

Positive Controls:

WB : COLO 320 cells, MCF-7 cells, mouse small intestine tissue, SGC-7901 cells

IP : COLO 320 cells,

IF : MCF-7 cells,

Background Information

Storage

Storage:

Store at -20°C. Stable for one year after shipment.

Storage Buffer:

PBS with 0.02% sodium azide and 50% glycerol pH 7.3.

Aliquoting is unnecessary for -20°C storage

For technical support and original validation data for this product please contact:

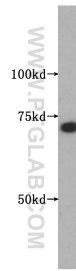
T: 4006900926

E: Proteintech-CN@ptglab.com

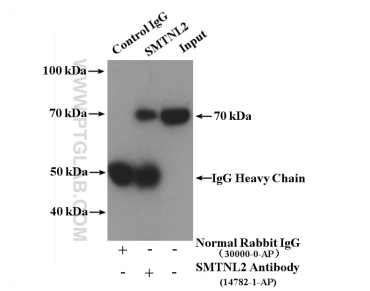
W: ptgcn.com

This product is exclusively available under Proteintech Group brand and is not available to purchase from any other manufacturer.

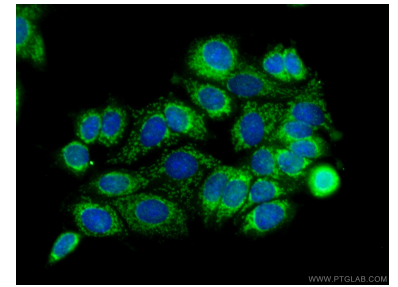
Selected Validation Data



COLO 320 cells were subjected to SDS PAGE followed by western blot with 14782-1-AP (SMTNL2 antibody) at dilution of 1:500 incubated at room temperature for 1.5 hours.



IP result of anti-SMTNL2 (IP:14782-1-AP, 4ug; Detection:14782-1-AP 1:500) with COLO 320 cells lysate 4000ug.



Immunofluorescent analysis of (-20°C Ethanol) fixed MCF-7 cells using 14782-1-AP (SMTNL2 antibody) at dilution of 1:25 and Alexa Fluor 488-conjugated AffiniPure Goat Anti-Rabbit IgG(H+L).