

ERLIN2 Polyclonal antibody

Catalog Number: 14781-1-AP

2 Publications

Basic Information

Catalog Number:

14781-1-AP

Size:

350 µg/ml

Source:

Rabbit

Isotype:

IgG

Immunogen Catalog Number:

AG6369

GenBank Accession Number:

BC067765

GeneID (NCBI):

11160

UNIPROT ID:

O94905

Full Name:

ER lipid raft associated 2

Calculated MW:

38 kDa

Observed MW:

38 kDa

Purification Method:

Antigen affinity purification

Recommended Dilutions:

WB 1:500-1:1000

IHC 1:50-1:500

Applications

Tested Applications:

IHC, WB, ELISA

Cited Applications:

WB

Species Specificity:

human, mouse, rat

Cited Species:

human

Note-IHC: suggested antigen retrieval with TE buffer pH 9.0; (*) Alternatively, antigen retrieval may be performed with citrate buffer pH 6.0

Positive Controls:

WB : HeLa cells,

IHC : human liver cancer tissue,

Background Information

ERLIN2, also named as C8orf2 and SPFH2, is a component of the ERLIN1/ERLIN2 complex which mediates the endoplasmic reticulum-associated degradation (ERAD) of inositol 1,4,5-trisphosphate receptors (IP3Rs) such as ITPR1 (PubMed:19240031, PubMed:17502376). It promotes sterol-accelerated ERAD of HMGCR probably implicating an AMFR/gp78-containing ubiquitin ligase complex (PubMed:21343306). ERLIN2 is involved in regulation of cellular cholesterol homeostasis by regulation the SREBP signaling pathway. The MW of ERLIN1/ERLIN2 complex is about 70 kDa.

Notable Publications

Author	Pubmed ID	Journal	Application
Bo-Tao Li	32776921	PLoS Genet	WB
Hazel Stewart	37860693	iScience	WB

Storage

Storage:

Store at -20°C. Stable for one year after shipment.

Storage Buffer:

PBS with 0.02% sodium azide and 50% glycerol pH 7.3.

Aliquoting is unnecessary for -20°C storage

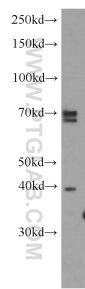
For technical support and original validation data for this product please contact:

T: 4006900926

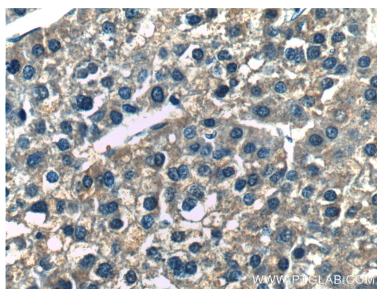
E: Proteintech-CN@ptglab.comW: ptgcn.com

This product is exclusively available under Proteintech Group brand and is not available to purchase from any other manufacturer.

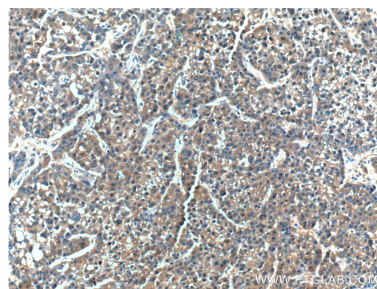
Selected Validation Data



HeLa cells were subjected to SDS PAGE followed by western blot with 14781-1-AP (ERLIN2 antibody) at dilution of 1:500 incubated at room temperature for 1.5 hours.



Immunohistochemical analysis of paraffin-embedded human liver cancer tissue slide using 14781-1-AP (ERLIN2 Antibody) at dilution of 1:200 (under 40x lens).



Immunohistochemical analysis of paraffin-embedded human liver cancer tissue slide using 14781-1-AP (ERLIN2 Antibody) at dilution of 1:200 (under 10x lens).