

For Research Use Only

# ATP6V1B1 Polyclonal antibody

Catalog Number: 14780-1-AP

7 Publications



## Basic Information

Catalog Number:

14780-1-AP

Size:

500 ug/ml

Source:

Rabbit

Isotype:

IgG

Immunogen Catalog Number:

AG6332

GenBank Accession Number:

BC063411

GeneID (NCBI):

525

UNIPROT ID:

P15313

Full Name:

ATPase, H<sup>+</sup> transporting, lysosomal  
56/58kDa, V1 subunit B1

Calculated MW:

57 kDa

Observed MW:

56 kDa

Purification Method:

Antigen affinity purification

Recommended Dilutions:

WB 1:5000-1:50000

IHC 1:50-1:500

IF/ICC 1:50-1:500

## Applications

Tested Applications:

WB, IHC, IF/ICC, ELISA

Cited Applications:

WB, IHC, IF

Species Specificity:

human, mouse, rat

Cited Species:

human, mouse

**Note-IHC: suggested antigen retrieval with  
TE buffer pH 9.0; (\*) Alternatively, antigen  
retrieval may be performed with citrate  
buffer pH 6.0**

Positive Controls:

WB : mouse brain tissue, mouse kidney tissue, rat brain  
tissue, human brain tissue

IHC : human kidney tissue,

IF/ICC : HEK-293 cells,

## Background Information

ATP6V1B1, also named ATP6B1, VATB and VPP3, belongs to the ATPase alpha/beta chains family. ATP6V1B1 is mainly expressed in kidney. ATP6V1B1 is essential for the proper assembly and activity of V-ATPase. In renal intercalated cells, ATP6V1B1 mediates secretion of protons (H<sup>+</sup>) into the urine thereby ensuring correct urinary acidification. The calculated molecular weight of ATP6V1B1 is 57 kDa.

## Notable Publications

| Author              | Pubmed ID | Journal           | Application |
|---------------------|-----------|-------------------|-------------|
| Lin Song            | 30061306  | Dis Model Mech    | IF          |
| Milena Kluge        | 30648263  | J Cell Physiol    | WB          |
| Enrico Castroflorio | 33340069  | Cell Mol Life Sci | WB          |

## Storage

Storage:

Store at -20°C. Stable for one year after shipment.

Storage Buffer:

PBS with 0.02% sodium azide and 50% glycerol pH 7.3.

Aliquoting is unnecessary for -20°C storage

For technical support and original validation data for this product please contact:

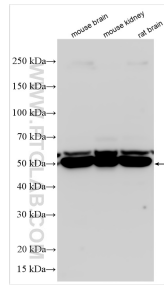
T: 4006900926

E: [Proteintech-CN@ptglab.com](mailto:Proteintech-CN@ptglab.com)

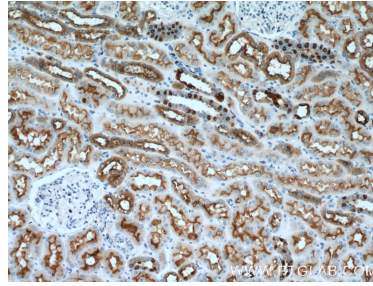
W: [ptgcn.com](http://ptgcn.com)

**This product is exclusively available under Proteintech Group brand and is not available to purchase from any other manufacturer.**

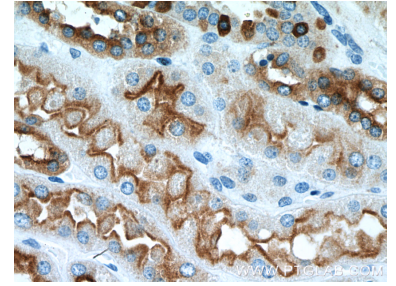
## Selected Validation Data



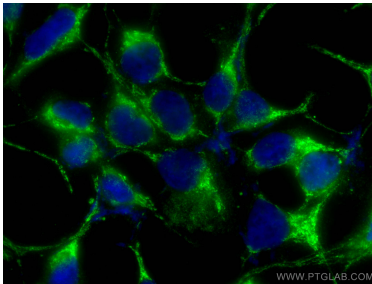
Various lysates were subjected to SDS PAGE followed by western blot with 14780-1-AP (ATP6V1B1 antibody) at dilution of 1:10000 incubated at room temperature for 1.5 hours.



Immunohistochemical analysis of paraffin-embedded human kidney tissue slide using 14780-1-AP (ATP6V1B1 Antibody) at dilution of 1:200 (under 10x lens).



Immunohistochemical analysis of paraffin-embedded human kidney tissue slide using 14780-1-AP (ATP6V1B1 Antibody) at dilution of 1:200 (under 40x lens).



Immunofluorescent analysis of (-20°C Ethanol) fixed HEK-293 cells using ATP6V1B1 antibody (14780-1-AP) at dilution of 1:200 and CoraLite®488-Conjugated AffiniPure Goat Anti-Rabbit IgG(H+L).