

For Research Use Only

MRPL27 Polyclonal antibody

Catalog Number: 14765-1-AP



Basic Information

Catalog Number: 14765-1-AP	GenBank Accession Number: BC001066	Purification Method: Antigen affinity purification
Size: 200 µg/ml	GeneID (NCBI): 51264	Recommended Dilutions: WB 1:300-1:1000 IHC 1:20-1:200 IF 1:50-1:500
Source: Rabbit	UNIPROT ID: Q9P0M9	
Isotype: IgG	Full Name: mitochondrial ribosomal protein L27	
Immunogen Catalog Number: AG6527	Calculated MW: 16 kDa	
	Observed MW: 10 kDa	

Applications

Tested Applications:
IF/ICC, IHC, WB, ELISA

Species Specificity:
human, mouse, rat

Note-IHC: suggested antigen retrieval with TE buffer pH 9.0; (*) Alternatively, antigen retrieval may be performed with citrate buffer pH 6.0

Positive Controls:

WB : A431 cells, BxPC-3 cells

IHC : human skin cancer tissue,

IF : A431 cells,

Background Information

Storage

Storage:
Store at -20°C. Stable for one year after shipment.
Storage Buffer:
PBS with 0.02% sodium azide and 50% glycerol pH 7.3.
Aliquoting is unnecessary for -20°C storage

For technical support and original validation data for this product please contact:

T: 4006900926

E: Proteintech-CN@ptglab.com

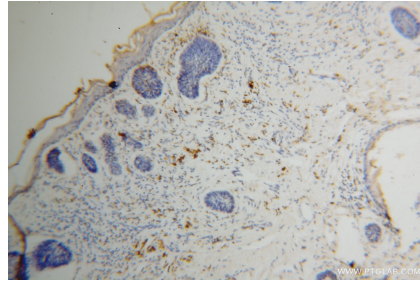
W: ptgcn.com

This product is exclusively available under Proteintech Group brand and is not available to purchase from any other manufacturer.

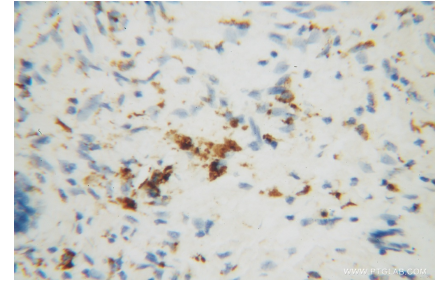
Selected Validation Data



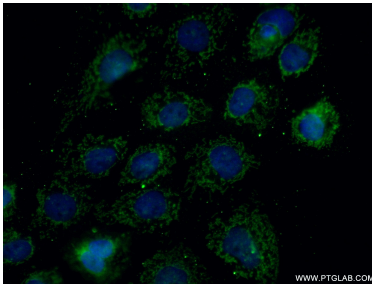
A431 cells were subjected to SDS PAGE followed by western blot with 14765-1-AP (MRPL27 antibody) at dilution of 1:300 incubated at room temperature for 1.5 hours.



Immunohistochemical analysis of paraffin-embedded human skin cancer using 14765-1-AP (MRPL27 antibody) at dilution of 1:50 (under 10x lens).



Immunohistochemical analysis of paraffin-embedded human skin cancer using 14765-1-AP (MRPL27 antibody) at dilution of 1:50 (under 40x lens).



Immunofluorescent analysis of (10% Formaldehyde) fixed A431 cells using 14765-1-AP (MRPL27 antibody) at dilution of 1:50 and Alexa Fluor 488-conjugated AffiniPure Goat Anti-Rabbit IgG(H+L).