

# MRPL16 Polyclonal antibody

Catalog Number: 14762-1-AP

## Basic Information

**Catalog Number:**

14762-1-AP

**Size:**

130 ug/ml

**Source:**

Rabbit

**Isotype:**

IgG

**Immunogen Catalog Number:**

AG6523

**GenBank Accession Number:**

BC001040

**GeneID (NCBI):**

54948

**UNIPROT ID:**

Q9NX20

**Full Name:**

mitochondrial ribosomal protein L16

**Calculated MW:**

28 kDa

**Observed MW:**

28 kDa

**Purification Method:**

Antigen affinity purification

**Recommended Dilutions:**

WB 1:500-1:1000

IP 0.5-4.0 ug for 1.0-3.0 mg of total protein lysate

IHC 1:50-1:500

## Applications

**Tested Applications:**

WB, IHC, IP, ELISA

**Species Specificity:**

human, mouse, rat

**Note-IHC: suggested antigen retrieval with TE buffer pH 9.0; (\*) Alternatively, antigen retrieval may be performed with citrate buffer pH 6.0**

**Positive Controls:**

WB : HeLa cells,

IP : HeLa cells,

IHC : human intrahepatic cholangiocarcinoma tissue,

## Background Information

MRPL16 (Mitochondrial Ribosomal Protein L16) is a protein coding gene. It encodes a 39S subunit protein. Mitochondrial ribosomes (mitoribosomes) consist of a small 28S subunit and a large 39S subunit. The molecular mass of MRPL16 is 28 kDa.

## Storage

**Storage:**

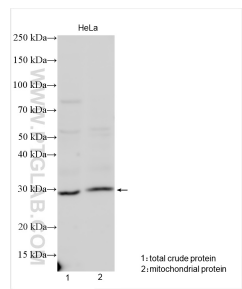
Store at -20°C. Stable for one year after shipment.

**Storage Buffer:**

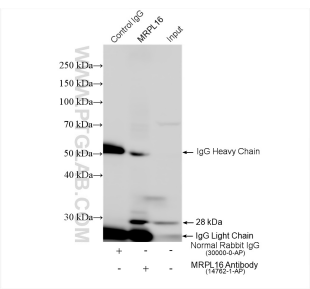
PBS with 0.02% sodium azide and 50% glycerol pH 7.3.

Aliquoting is unnecessary for -20°C storage

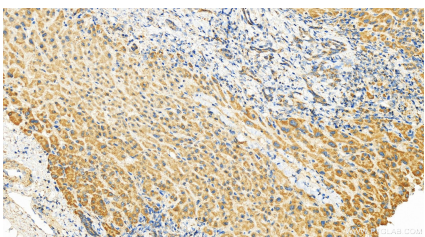
Selected Validation Data



Various lysates were subjected to SDS PAGE followed by western blot with 14762-1-AP (MRPL16 antibody) at dilution of 1:800 incubated at room temperature for 1.5 hours.



IP result of anti-MRPL16 (IP:14762-1-AP, 4ug; Detection:14762-1-AP 1:500) with HeLa cells lysate 1520 ug.



Immunohistochemical analysis of paraffin-embedded human intrahepatic cholangiocarcinoma tissue slide using 14762-1-AP (MRPL16 antibody) at dilution of 1:200 (under 20x lens). Heat mediated antigen retrieval with Tris-EDTA buffer (pH 9.0).