

For Research Use Only

COMT Polyclonal antibody

Catalog Number: 14754-1-AP

13 Publications



Basic Information

Catalog Number:

14754-1-AP

Concentration:

500 ug/ml

Source:

Rabbit

Isotype:

IgG

Immunogen Catalog Number:

AG6502

GenBank Accession Number:

BC000419

GeneID (NCBI):

1312

UNIPROT ID:

P21964

Full Name:

catechol-O-methyltransferase

Calculated MW:

30 kDa

Observed MW:

28-30 kDa

Purification Method:

Antigen affinity purification

Recommended Dilutions:

WB 1:1000-1:4000

IP 0.5-4.0 ug for 1.0-3.0 mg of total protein lysate

IHC 1:100-1:800

IF-P 1:50-1:500

IF/ICC 1:50-1:500

Applications

Tested Applications:

WB, IHC, IF/ICC, IF-P, FC (Intra), IP, ELISA

Cited Applications:

WB, IHC, IF

Species Specificity:

human, mouse, rat

Cited Species:

human, mouse, rat, monkey

Note-IHC: suggested antigen retrieval with TE buffer pH 9.0; (*) Alternatively, antigen retrieval may be performed with citrate buffer pH 6.0

Positive Controls:

WB : HEK-293 cells, K-562 cells, human placenta, mouse liver, rat liver

IP : K-562 cells,

IHC : human liver tissue, human placenta tissue, mouse lung tissue

IF-P : mouse cerebellum tissue,

IF/ICC : HepG2 cells,

Background Information

Catechol O-methyltransferase (COMT) is an important enzyme that catalyzes O-methylation and inactivation of metabolically active catechol-containing bioactive molecules and drugs. The mammalian COMT enzyme exists in soluble form (24-26 kDa) and membrane-bound form (28-30 kDa), which are encoded by a single gene utilizing different promoters.

Notable Publications

Author	Pubmed ID	Journal	Application
Adedamola Bayo-Olugbami	32912107	Nutr Neurosci	WB
Yonglong Zhou	34725639	Biomed Res Int	WB,IF
Yinrui Guo	34045460	Transl Psychiatry	WB

Storage

Storage:

Store at -20°C. Stable for one year after shipment.

Storage Buffer:

PBS with 0.02% sodium azide and 50% glycerol

Aliquoting is unnecessary for -20°C storage

For technical support and original validation data for this product please contact:

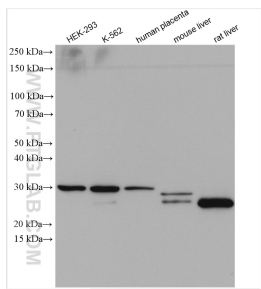
T: 4006900926

E: Proteintech-CN@ptglab.com

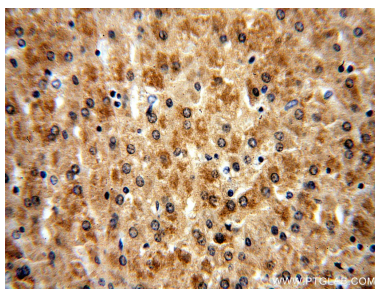
W: ptgcn.com

This product is exclusively available under Proteintech Group brand and is not available to purchase from any other manufacturer.

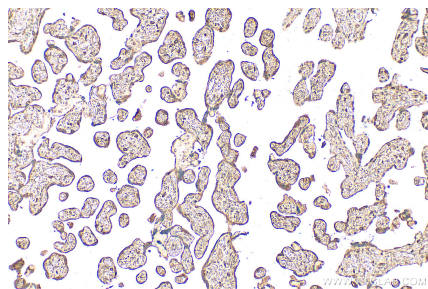
Selected Validation Data



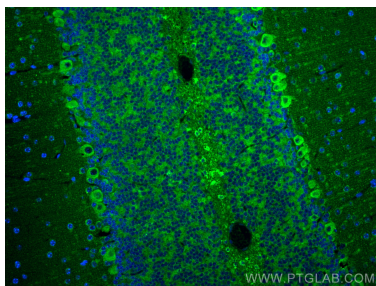
Various lysates were subjected to SDS PAGE followed by western blot with 14754-1-AP (COMT antibody) at dilution of 1:2000 incubated at room temperature for 1.5 hours.



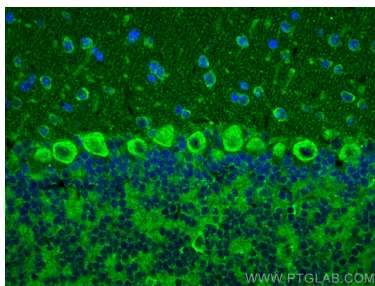
Immunohistochemical analysis of paraffin-embedded human liver using 14754-1-AP (COMT antibody) at dilution of 1:100 (under 40x lens).



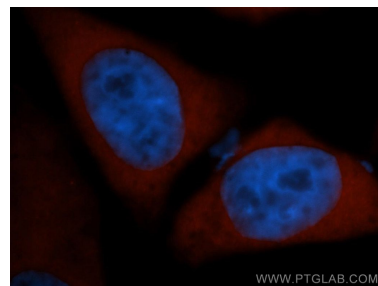
Immunohistochemical analysis of paraffin-embedded human placenta tissue slide using 14754-1-AP (COMT antibody) at dilution of 1:200 (under 10x lens). Heat mediated antigen retrieval with Tris-EDTA buffer (pH 9.0).



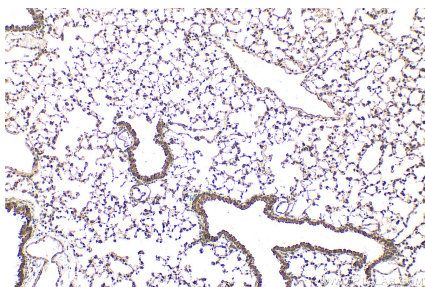
Immunofluorescent analysis of (4% PFA) fixed mouse cerebellum tissue using COMT antibody (14754-1-AP) at dilution of 1:200 and CoraLite®488-Conjugated AffiniPure Goat Anti-Rabbit IgG(H+L).



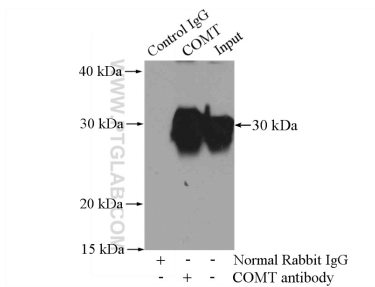
Immunofluorescent analysis of (4% PFA) fixed mouse cerebellum tissue using COMT antibody (14754-1-AP) at dilution of 1:200 and CoraLite®488-Conjugated AffiniPure Goat Anti-Rabbit IgG(H+L).



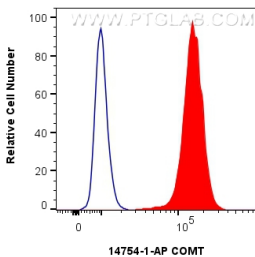
Immunofluorescent analysis of HepG2 cells, using COMT antibody 14754-1-AP at 1:50 dilution and Rhodamine-labeled goat anti-rabbit IgG (red). Blue pseudocolor = DAPI (fluorescent DNA dye).



Immunohistochemical analysis of paraffin-embedded mouse lung tissue slide using 14754-1-AP (COMT antibody) at dilution of 1:200 (under 10x lens). Heat mediated antigen retrieval with Tris-EDTA buffer (pH 9.0).



IP result of anti-COMT (IP:14754-1-AP, 4ug; Detection:14754-1-AP 1:500) with K-562 cells lysate 1200ug.



1x10⁶ PC-3 cells were intracellularly stained with 0.8 ug COMT Polyclonal antibody (14754-1-AP) and CoraLite®488-Conjugated AffiniPure Goat Anti-Rabbit IgG(H+L) (SA00013-2)(red), or 0.8 ug Rabbit IgG control Rabbit PolyAb (30000-0-AP) (blue). Cells were fixed with 4% PFA and permeabilized with Flow Cytometry Perm Buffer (PF00011-C).