

For Research Use Only

# CLP1 Polyclonal antibody

Catalog Number: 14746-1-AP

2 Publications



## Basic Information

Catalog Number:

14746-1-AP

Size:

700 µg/ml

Source:

Rabbit

Isotype:

IgG

Immunogen Catalog Number:

AG6479

GenBank Accession Number:

BC000446

GeneID (NCBI):

10978

UNIPROT ID:

Q92989

Full Name:

CLP1, cleavage and polyadenylation factor I subunit, homolog (S. cerevisiae)

Calculated MW:

48 kDa

Observed MW:

41 kDa, 48 kDa

Purification Method:

Antigen affinity purification

Recommended Dilutions:

WB 1:500-1:1000

## Applications

Tested Applications:

WB, ELISA

Cited Applications:

WB

Species Specificity:

human, mouse

Cited Species:

human

Positive Controls:

WB : mouse testis tissue, HeLa cells

## Background Information

CLP1, also named as HEAB, is a 425 amino acid protein, which belongs to the Clp1 family. CLP1 as a polynucleotide kinase, that can phosphorylate the 5'-hydroxyl groups of double-stranded RNA (dsRNA), single-stranded RNA (ssRNA), double-stranded DNA (dsDNA) and double-stranded DNA:RNA hybrids. Human CLP1 is a component of the mRNA 3' end cleavage and polyadenylation machinery<sup>4,5</sup> and studies in yeast have postulated a function for CLP1 in coupling mRNA 3' end processing with RNA Pol II transcriptional termination. CLP1 exists 2 isoforms with MV 41 kDa and 48 kDa.

## Notable Publications

Author	Pubmed ID	Journal	Application
Xiaodong Lu	27353326	Nucleic Acids Res	
Huihui An	39481383	Mol Cell	WB

## Storage

Storage:

Store at -20°C. Stable for one year after shipment.

Storage Buffer:

PBS with 0.02% sodium azide and 50% glycerol pH 7.3.

Aliquoting is unnecessary for -20°C storage

For technical support and original validation data for this product please contact:

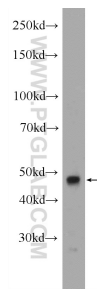
T: 4006900926

E: [Proteintech-CN@ptglab.com](mailto:Proteintech-CN@ptglab.com)

W: [ptgcn.com](http://ptgcn.com)

This product is exclusively available under Proteintech Group brand and is not available to purchase from any other manufacturer.

## Selected Validation Data



mouse testis tissue were subjected to SDS PAGE followed by western blot with 14746-1-AP (CLP1 Antibody) at dilution of 1:600 incubated at room temperature for 1.5 hours.