

For Research Use Only

PDHB Polyclonal antibody

Catalog Number: 14744-1-AP

Featured Product

20 Publications



Basic Information

Catalog Number:

14744-1-AP

Size:

400 µg/ml

Source:

Rabbit

Isotype:

IgG

Immunogen Catalog Number:

AG6442

GenBank Accession Number:

BC000439

GeneID (NCBI):

5162

UNIPROT ID:

P11177

Full Name:

pyruvate dehydrogenase (lipoamide)

beta

Calculated MW:

39 kDa

Observed MW:

34 kDa

Purification Method:

Antigen affinity purification

Recommended Dilutions:

WB 1:1000-1:6000

IP 0.5-4.0 µg for 1.0-3.0 mg of total

protein lysate

IHC 1:200-1:800

IF 1:200-1:800

Applications

Tested Applications:

WB, IP, IHC, IF/ICC, ELISA

Cited Applications:

WB, IP, IHC

Species Specificity:

human, mouse, rat

Cited Species:

human, rat, mouse, bat

Positive Controls:

WB : K-562 cells, human heart tissue, mouse skeletal muscle tissue, rat skeletal muscle tissue

IP : mouse heart tissue,

IHC : mouse skeletal muscle tissue,

IF : HeLa cells,

Note-IHC: suggested antigen retrieval with TE buffer pH 9.0; (*) Alternatively, antigen retrieval may be performed with citrate buffer pH 6.0

Background Information

PDHB(Pyruvate dehydrogenase E1 component subunit beta, mitochondrial) is also named as PHE1B. The enzyme, which is found in mitochondria, is one of the component enzymes of the pyruvate dehydrogenase multienzyme complex (PDH). It catalyzes the first reaction of an oxidative decarboxylation sequence converting pyruvate to acetyl-CoA and CO₂(PMID:3422424). Defects in PDHB are the cause of pyruvate dehydrogenase E1-beta deficiency (PDHBD)(PMID:15138885).

Notable Publications

Author	Pubmed ID	Journal	Application
Zhen Cai	33022274	Mol Cell	WB
Israa Sharkia	27871875	J Allergy Clin Immunol	WB
Henrick Horita	29786648	Proteomes	WB

Storage

Storage:

Store at -20°C. Stable for one year after shipment.

Storage Buffer:

PBS with 0.02% sodium azide and 50% glycerol pH 7.3.

Aliquoting is unnecessary for -20°C storage

For technical support and original validation data for this product please contact:

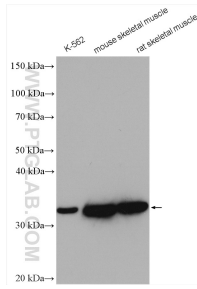
T: 4006900926

E: Proteintech-CN@ptglab.com

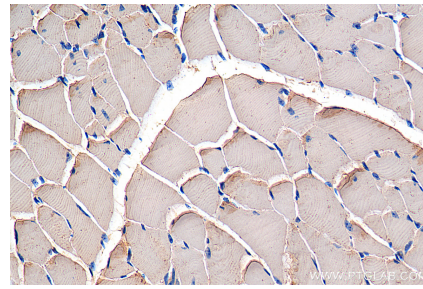
W: ptgcn.com

This product is exclusively available under Proteintech Group brand and is not available to purchase from any other manufacturer.

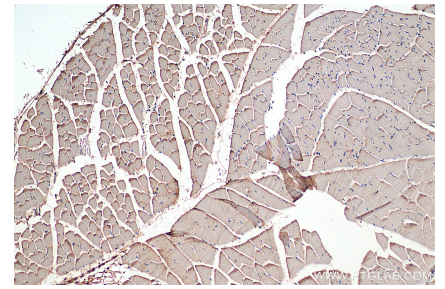
Selected Validation Data



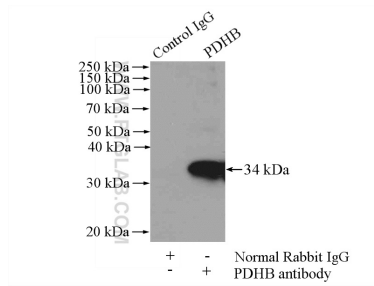
Various lysates were subjected to SDS PAGE followed by western blot with 14744-1-AP (PDHB antibody) at dilution of 1:3000 incubated at room temperature for 1.5 hours.



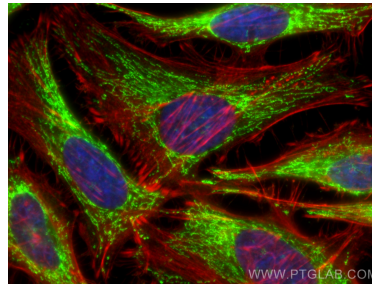
Immunohistochemical analysis of paraffin-embedded mouse skeletal muscle tissue slide using 14744-1-AP (PDHB antibody) at dilution of 1:400 (under 40x lens). Heat mediated antigen retrieval with Tris-EDTA buffer (pH 9.0).



Immunohistochemical analysis of paraffin-embedded mouse skeletal muscle tissue slide using 14744-1-AP (PDHB antibody) at dilution of 1:400 (under 10x lens). Heat mediated antigen retrieval with Tris-EDTA buffer (pH 9.0).



IP result of anti-PDHB (IP:14744-1-AP, 4ug; Detection:14744-1-AP 1:300) with mouse heart tissue lysate 4000ug.



Immunofluorescent analysis of (-20°C Ethanol) fixed HeLa cells using PDHB antibody (14744-1-AP) at dilution of 1:400 and Coralite®488-Conjugated AffiniPure Goat Anti-Rabbit IgG(H+L), CL594-Phalloidin (red).