

For Research Use Only

# UQCRC2 Polyclonal antibody

Catalog Number: 14742-1-AP

Featured Product

85 Publications



## Basic Information

**Catalog Number:**

14742-1-AP

**Concentration:**

800 ug/ml

**Source:**

Rabbit

**Isotype:**

IgG

**Immunogen Catalog Number:**

AG6432

**GenBank Accession Number:**

BC000484

**GeneID (NCBI):**

7385

**UNIPROT ID:**

P22695

**Full Name:**

ubiquinol-cytochrome c reductase core protein II

**Calculated MW:**

48 kDa

**Observed MW:**

48 kDa

**Purification Method:**

Antigen affinity purification

**Recommended Dilutions:**

WB 1:2000-1:12000

IP 0.5-4.0 ug for 1.0-3.0 mg of total protein lysate

IHC 1:200-1:1200

IF/ICC 1:50-1:500

## Applications

**Tested Applications:**

WB, IHC, IF/ICC, IP, ELISA

**Cited Applications:**

WB, IHC, IF

**Species Specificity:**

human, mouse, rat

**Cited Species:**

human, mouse, rat, zebrafish, sheep

**Note-IHC: suggested antigen retrieval with TE buffer pH 9.0; (\*) Alternatively, antigen retrieval may be performed with citrate buffer pH 6.0**

**Positive Controls:**

WB : mouse brain tissue, human colon tissue, mouse heart tissue, rat heart tissue

IP : HeLa cells,

IHC : human colon cancer tissue, human normal colon

IF/ICC : HepG2 cells,

## Background Information

UQCRC2(Ubiquinol-cytochrome-c reductase complex core protein 2) is also named as complex III subunit 2, core protein II and belongs to the UQCRC2/QCR2 subfamily. The bc1 complex contains 11 subunits: 3 respiratory subunits (cytochrome b, cytochrome c1 and Rieske/UQCRFS1), 2 core proteins (UQCRC1/QCR1 and UQCRC2/QCR2) and 6 low-molecular weight proteins (UQCRH/QCR6, UQCRB/QCR7, UQCRCQ/QCR8, UQCR10/QCR9, UQCR11/QCR10 and a cleavage product of Rieske/UQCRFS1) and is part of the mitochondrial respiratory chain. This protein distributes in mitochondrion inner membrane, peripheral membrane protein and matrix side.

## Notable Publications

Author	Pubmed ID	Journal	Application
Giulia Notarangelo	36173860	Science	WB
Wen-Kuan Huang	34638938	Int J Mol Sci	WB
Lei Wu	33129969	J Nutr Biochem	WB

## Storage

**Storage:**

Store at -20°C. Stable for one year after shipment.

**Storage Buffer:**

PBS with 0.02% sodium azide and 50% glycerol pH 7.3.

Aliquoting is unnecessary for -20°C storage

For technical support and original validation data for this product please contact:

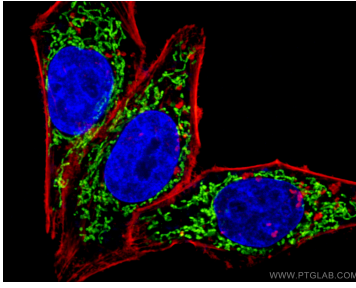
T: 4006900926

E: Proteintech-CN@ptglab.com

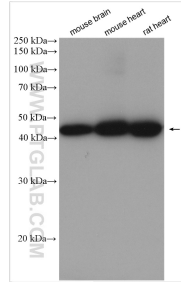
W: ptgcn.com

**This product is exclusively available under Proteintech Group brand and is not available to purchase from any other manufacturer.**

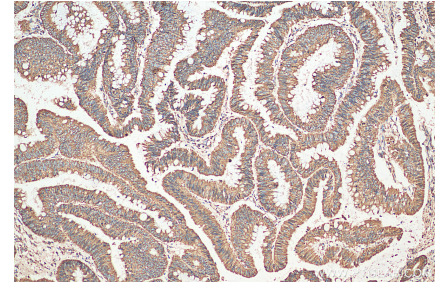
## Selected Validation Data



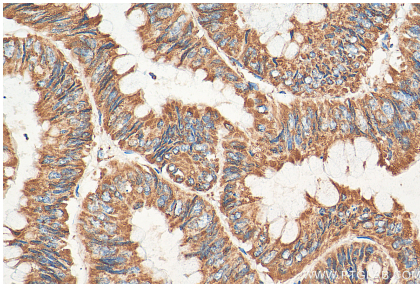
Immunofluorescent analysis of (4% PFA) fixed HepG2 cells using 14742-1-AP (UQCRC2 antibody) at dilution of 1:100 and CoraLite488-Conjugated Goat Anti-Rabbit IgG(H+L); Phalloidin stains F-actin (Red).



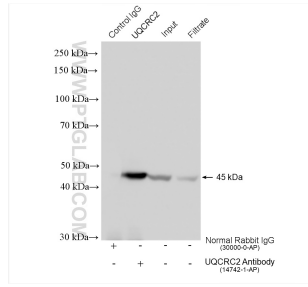
Various lysates were subjected to SDS PAGE followed by western blot with 14742-1-AP (UQCRC2 antibody) at dilution of 1:6000 incubated at room temperature for 1.5 hours.



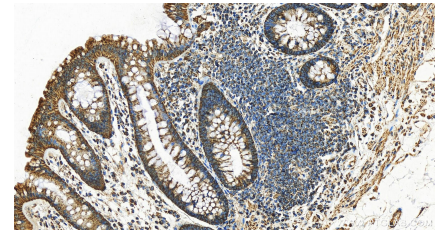
Immunohistochemical analysis of paraffin-embedded human colon cancer tissue slide using 14742-1-AP (UQCRC2 antibody) at dilution of 1:200 (under 10x lens). Heat mediated antigen retrieval with Tris-EDTA buffer (pH 9.0).



Immunohistochemical analysis of paraffin-embedded human colon cancer tissue slide using 14742-1-AP (UQCRC2 antibody) at dilution of 1:200 (under 40x lens). Heat mediated antigen retrieval with Tris-EDTA buffer (pH 9.0).



IP result of anti-UQCRC2 (IP:14742-1-AP, 4ug; Detection:14742-1-AP 1:40000) with HeLa cells lysate 1320 ug.



Immunohistochemical analysis of paraffin-embedded human normal colon slide using 14742-1-AP (UQCRC2 antibody) at dilution of 1:1200 (under 20x lens). Heat mediated antigen retrieval with Tris-EDTA buffer (pH 9.0).