

# PSMB7 Polyclonal antibody

Catalog Number: 14727-1-AP

3 Publications

## Basic Information

## Catalog Number:

14727-1-AP

## Size:

133 µg/ml

## Source:

Rabbit

## Isotype:

IgG

## Immunogen Catalog Number:

AG6486

## GenBank Accession Number:

BC000509

## GeneID (NCBI):

5695

## UNIPROT ID:

Q99436

## Full Name:

proteasome (prosome, macropain)  
subunit, beta type, 7

## Calculated MW:

29.9 kDa

## Observed MW:

25-27 kDa

## Purification Method:

Antigen affinity purification

## Recommended Dilutions:

WB 1:200-1:1000

IHC 1:20-1:200

## Applications

## Tested Applications:

WB, IHC, ELISA

## Cited Applications:

WB

## Species Specificity:

human, mouse, rat

## Cited Species:

rat, mouse

**Note-IHC: suggested antigen retrieval with TE buffer pH 9.0; (\*) Alternatively, antigen retrieval may be performed with citrate buffer pH 6.0**

## Positive Controls:

WB: Raji cells, A549 cells

IHC: human colon cancer tissue, human breast cancer tissue, human colon tissue

## Background Information

The proteasome is a multicatalytic proteinase complex with a highly ordered ring-shaped 20S core structure. PSMB7 protein is a member of the proteasome B-type family, also known as the T1B family, and is a 20S core beta subunit in the proteasome. Expression of this catalytic subunit is downregulated by gamma interferon, and proteolytic processing is required to generate a mature subunit. Component of the 20S core proteasome complex are involved in the proteolytic degradation of most intracellular proteins. PSMB7 displays a trypsin-like activity. (PMID:15244466, PMID:27176742, PMID: 8610016)

## Notable Publications

Author	Pubmed ID	Journal	Application
Xin Xie	35710020	Biochem Pharmacol	WB
Samir R Nath	29809168	J Clin Invest	WB
Wenjuan Zhang	33919255	Int J Mol Sci	WB

## Storage

## Storage:

Store at -20°C. Stable for one year after shipment.

## Storage Buffer:

PBS with 0.02% sodium azide and 50% glycerol pH 7.3.

Aliquoting is unnecessary for -20°C storage

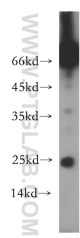
For technical support and original validation data for this product please contact:

T: 4006900926

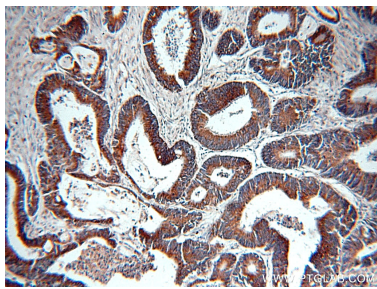
E: [Proteintech-CN@ptglab.com](mailto:Proteintech-CN@ptglab.com)W: [ptgcn.com](http://ptgcn.com)

**This product is exclusively available under Proteintech Group brand and is not available to purchase from any other manufacturer.**

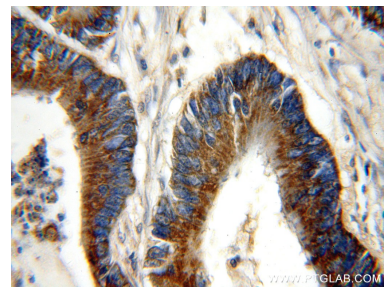
## Selected Validation Data



Raji cells were subjected to SDS PAGE followed by western blot with 14727-1-AP (PSMB7 antibody) at dilution of 1:200 incubated at room temperature for 1.5 hours.



Immunohistochemical analysis of paraffin-embedded human colon cancer using 14727-1-AP (PSMB7 antibody) at dilution of 1:50 (under 10x lens).



Immunohistochemical analysis of paraffin-embedded human colon cancer using 14727-1-AP (PSMB7 antibody) at dilution of 1:50 (under 40x lens).