

For Research Use Only

DAPP1 Polyclonal antibody

Catalog Number: 14722-1-AP

Featured Product

1 Publications



Basic Information

Catalog Number:

14722-1-AP

Size:

700 µg/ml

Source:

Rabbit

Isotype:

IgG

Immunogen Catalog Number:

AG6459

GenBank Accession Number:

BC012924

GeneID (NCBI):

27071

UNIPROT ID:

Q9UN19

Full Name:

dual adaptor of phosphotyrosine and 3-phosphoinositides

Calculated MW:

32 kDa

Purification Method:

Antigen affinity purification

Recommended Dilutions:

IHC 1:20-1:200

IF 1:20-1:200

Applications

Tested Applications:

IF/ICC, IHC, ELISA

Cited Applications:

WB

Species Specificity:

human, mouse, rat

Cited Species:

human

Positive Controls:

IHC : human liver cancer tissue,

IF : HeLa cells,

Note-IHC: suggested antigen retrieval with TE buffer pH 9.0; (*) Alternatively, antigen retrieval may be performed with citrate buffer pH 6.0

Background Information

DAPP1 was identified as dual adaptor for phosphotyrosine and 3-phosphoinositides, a novel 280 amino acid protein which contains a putative myristoylation site at its N-terminus followed by a SH2 and a PH domain at its C-terminus (PMID: 10432293). DAPP1 is also referred to B cell adaptor molecule of 32 kDa (Bam32), and is expressed by B lymphocytes, but not T lymphocytes or nonhematopoietic cells. DAPP1/Bam32 was shown to regulate BCR signaling downstream of phosphatidylinositol 3-kinase (PI3K) (PMID: 10770799). Furthermore, DAPP1/Bam32 may server to integrate PI3K and Src kinase signaling to promote Rac-dependent B cell adhesive interactions important for antigen presentation function (PMID: 20495066).

Notable Publications

Author	Pubmed ID	Journal	Application
Xu Zhang	28331001	Mol Cell Proteomics	WB

Storage

Storage:

Store at -20°C. Stable for one year after shipment.

Storage Buffer:

PBS with 0.02% sodium azide and 50% glycerol pH 7.3.

Aliquoting is unnecessary for -20°C storage

For technical support and original validation data for this product please contact:

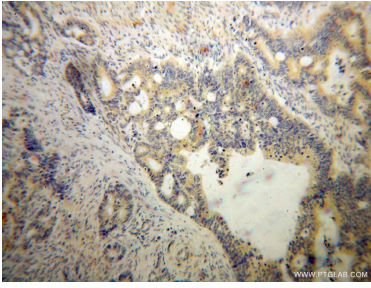
T: 4006900926

E: Proteintech-CN@ptglab.com

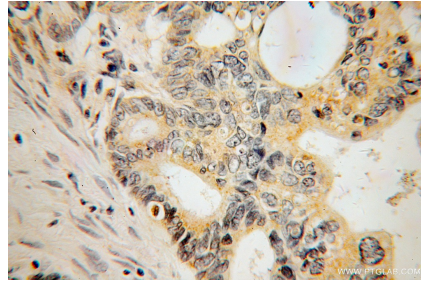
W: ptgcn.com

This product is exclusively available under Proteintech Group brand and is not available to purchase from any other manufacturer.

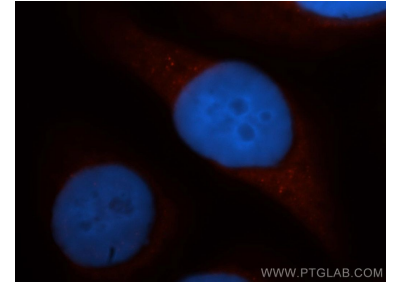
Selected Validation Data



Immunohistochemical analysis of paraffin-embedded human liver cancer using 14722-1-AP (DAPP1 antibody) at dilution of 1:100 (under 10x lens).



Immunohistochemical analysis of paraffin-embedded human liver cancer using 14722-1-AP (DAPP1 antibody) at dilution of 1:100 (under 40x lens).



Immunofluorescent analysis of HeLa cells, using DAPP1 antibody 14722-1-AP at 1:50 dilution and Rhodamine-labeled goat anti-rabbit IgG (red). Blue pseudocolor = DAPI (fluorescent DNA dye).