

For Research Use Only

PCP4 Polyclonal antibody

Catalog Number: 14705-1-AP

12 Publications



Basic Information

Catalog Number:

14705-1-AP

Concentration:

700 µg/ml

Source:

Rabbit

Isotype:

IgG

Immunogen Catalog Number:

AG6388

GenBank Accession Number:

BC013791

GeneID (NCBI):

5121

UNIPROT ID:

P48539

Full Name:

Purkinje cell protein 4

Calculated MW:

7 kDa

Observed MW:

8 kDa

Purification Method:

Antigen affinity purification

Recommended Dilutions:

WB 1:1000-1:6000

IP 0.5-4.0 µg for 1.0-3.0 mg of total protein lysate

IHC 1:50-1:500

IF-P 1:50-1:500

Applications

Tested Applications:

WB, IHC, IF-P, IP, ELISA

Cited Applications:

WB, IHC, IF

Species Specificity:

human, mouse, rat

Cited Species:

human, mouse, rat

Note-IHC: suggested antigen retrieval with TE buffer pH 9.0; (*) Alternatively, antigen retrieval may be performed with citrate buffer pH 6.0

Positive Controls:

WB : mouse brain tissue, rat brain

IP : mouse brain tissue,

IHC : human cerebellum tissue, mouse brain tissue, mouse cerebellum tissue

IF-P : mouse brain tissue,

Background Information

PCP4, also named as PEP19, belongs to a family of proteins involved in calcium transduction signals and binds calmodulin via an IQ motif, in a calcium independent manner. It is mainly expressed in ectoderm and neuroectoderm comprising neural crest derived cells.

Notable Publications

Author	Pubmed ID	Journal	Application
Rui Dong	32946775	Cancer Cell	IF
Jimena Monzón-Sandoval	32167609	Ann Neurol	WB
Heydar Davoudi	30664772	Nat Neurosci	IF

Storage

Storage:

Store at -20°C. Stable for one year after shipment.

Storage Buffer:

PBS with 0.02% sodium azide and 50% glycerol pH 7.3.

Aliquoting is unnecessary for -20°C storage

For technical support and original validation data for this product please contact:

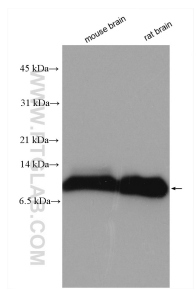
T: 4006900926

E: Proteintech-CN@ptglab.com

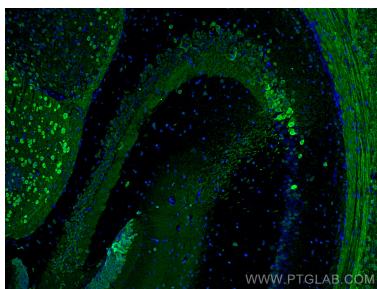
W: ptgcn.com

This product is exclusively available under Proteintech Group brand and is not available to purchase from any other manufacturer.

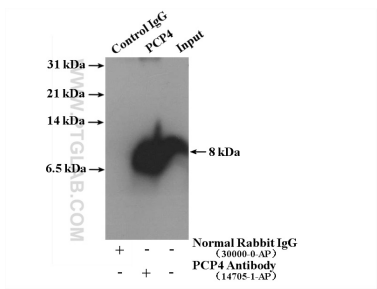
Selected Validation Data



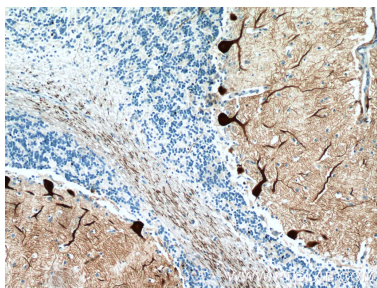
Various lysates were subjected to SDS PAGE followed by western blot with 14705-1-AP (PCP4 antibody) at dilution of 1:3000 incubated at room temperature for 1.5 hours.



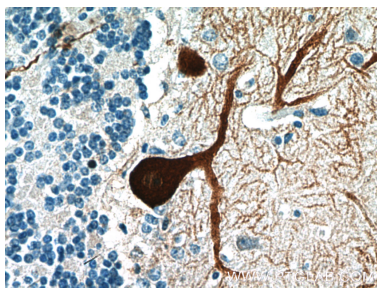
Immunofluorescent analysis of (4% PFA) fixed mouse brain tissue using PCP4 antibody (14705-1-AP) at dilution of 1:200 and CoraLite®488-Conjugated Goat Anti-Rabbit IgG(H+L).



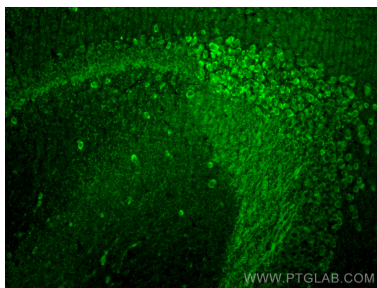
IP result of anti-PCP4 (IP:14705-1-AP, 4ug; Detection:14705-1-AP 1:1000) with mouse brain tissue lysate 4000 ug.



Immunohistochemical analysis of paraffin-embedded human cerebellum tissue slide using 14705-1-AP (PCP4 Antibody) at dilution of 1:200 (under 10x lens).



Immunohistochemical analysis of paraffin-embedded human cerebellum tissue slide using 14705-1-AP (PCP4 Antibody) at dilution of 1:200 (under 40x lens).



Immunofluorescent analysis of (4% PFA) fixed paraffin-embedded mouse brain tissue using PCP4 antibody (14705-1-AP) at dilution of 1:200 and CoraLite®488-Conjugated Goat Anti-Rabbit IgG(H+L) (SA00013-2). Heat mediated antigen retrieval with Tris-EDTA buffer (pH 9.0).