

For Research Use Only

MAP4K3 Polyclonal antibody

Catalog Number: 14702-1-AP

Featured Product

1 Publications



Basic Information

Catalog Number:

14702-1-AP

Size:

550 µg/ml

Source:

Rabbit

Isotype:

IgG

Immunogen Catalog Number:

AG6372

GenBank Accession Number:

BC071579

GeneID (NCBI):

8491

UNIPROT ID:

Q8IVH8

Full Name:

mitogen-activated protein kinase
kinase kinase kinase 3

Calculated MW:

101 kDa

Observed MW:

100 kDa

Purification Method:

Antigen affinity purification

Recommended Dilutions:

WB 1:300-1:1000

IHC 1:20-1:200

Applications

Tested Applications:

IHC, WB, ELISA

Cited Applications:

WB

Species Specificity:

human, mouse, rat

Cited Species:

mouse, rat

Note-IHC: suggested antigen retrieval with TE buffer pH 9.0; (*) Alternatively, antigen retrieval may be performed with citrate buffer pH 6.0

Positive Controls:

WB : human skeletal muscle tissue, HeLa cells, human brain tissue

IHC : human skeletal muscle tissue, human heart tissue

Background Information

MAP4K3 (Mitogen-activated protein kinase kinase kinase kinase 3) has kinase activity and that it activates JNK but not MAPK1, MAPK3 or MAPK14 through the activation of MAP3K1 and MAP2K4. Endogenous MAP4K3 kinase activity could be stimulated by exposure to ultraviolet radiation or to tumor necrosis factor.

Notable Publications

Author	Pubmed ID	Journal	Application
Yuyan Fan	35510516	Bioengineered	WB

Storage

Storage:

Store at -20°C. Stable for one year after shipment.

Storage Buffer:

PBS with 0.02% sodium azide and 50% glycerol pH 7.3.

Aliquoting is unnecessary for -20°C storage

For technical support and original validation data for this product please contact:

T: 4006900926

E: Proteintech-CN@ptglab.com

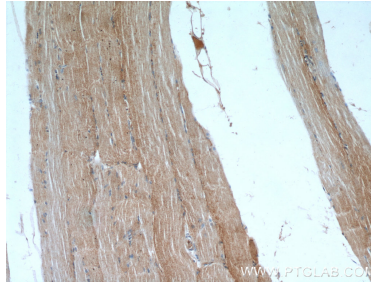
W: ptgcn.com

This product is exclusively available under Proteintech Group brand and is not available to purchase from any other manufacturer.

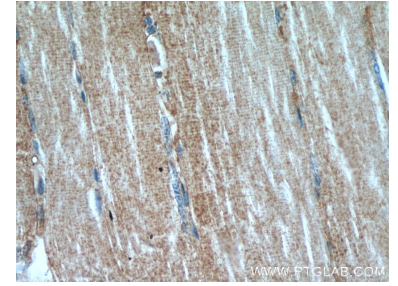
Selected Validation Data



human skeletal muscle tissue were subjected to SDS PAGE followed by western blot with 14702-1-AP (MAP4K3 antibody) at dilution of 1:500 incubated at room temperature for 1.5 hours.



Immunohistochemical analysis of paraffin-embedded human skeletal muscle using 14702-1-AP (MAP4K3 antibody) at dilution of 1:100 (under 10x lens).



Immunohistochemical analysis of paraffin-embedded human skeletal muscle using 14702-1-AP (MAP4K3 antibody) at dilution of 1:100 (under 40x lens).