

For Research Use Only

# RPL19 Polyclonal antibody

Catalog Number: 14701-1-AP **7 Publications**



## Basic Information

**Catalog Number:**

14701-1-AP

**Size:**

300 µg/ml

**Source:**

Rabbit

**Isotype:**

IgG

**Immunogen Catalog Number:**

AG6371

**GenBank Accession Number:**

BC066315

**GeneID (NCBI):**

6143

**UNIPROT ID:**

P84098

**Full Name:**

ribosomal protein L19

**Calculated MW:**

23 kDa

**Observed MW:**

28 kDa

**Purification Method:**

Antigen affinity purification

**Recommended Dilutions:**

WB 1:500-1:3000

IP 0.5-4.0 µg for 1.0-3.0 mg of total protein lysate

IHC 1:20-1:200

IF 1:50-1:500

## Applications

**Tested Applications:**

IF/ICC, IHC, IP, WB, ELISA

**Cited Applications:**

WB, FC

**Species Specificity:**

human, mouse, rat

**Cited Species:**

human, mouse

**Note-IHC: suggested antigen retrieval with TE buffer pH 9.0; (\*) Alternatively, antigen retrieval may be performed with citrate buffer pH 6.0**

**Positive Controls:**

**WB:** HeLa cells, MCF-7 cells, mouse spleen tissue, mouse testis tissue, PC-3 cells

**IP:** HeLa cells,

**IHC:** human brain tissue, mouse brain tissue

**IF:** HeLa cells,

## Background Information

RPL19, also named as 60S ribosomal protein L19, is a 196 amino acid protein, which belongs to the ribosomal protein L19e family. RPL19 encodes a ribosomal protein that is a component of the 60S subunit.

## Notable Publications

Author	Pubmed ID	Journal	Application
Chandreyee Datta	36306353	Sci Adv	WB
Harrison Tudor Evans	31118249	EMBO J	
Harrison Tudor Evans	31268600	EMBO J	WB

## Storage

**Storage:**

Store at -20°C. Stable for one year after shipment.

**Storage Buffer:**

PBS with 0.02% sodium azide and 50% glycerol pH 7.3.

Aliquoting is unnecessary for -20°C storage

For technical support and original validation data for this product please contact:

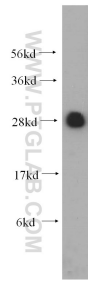
T: 4006900926

E: Proteintech-CN@ptglab.com

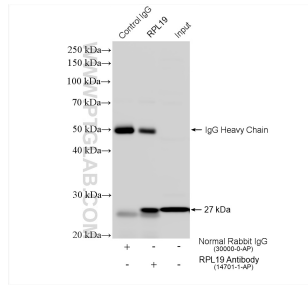
W: ptgcn.com

**This product is exclusively available under Proteintech Group brand and is not available to purchase from any other manufacturer.**

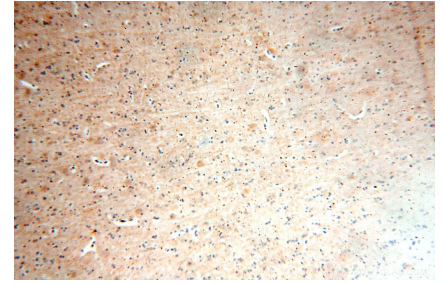
## Selected Validation Data



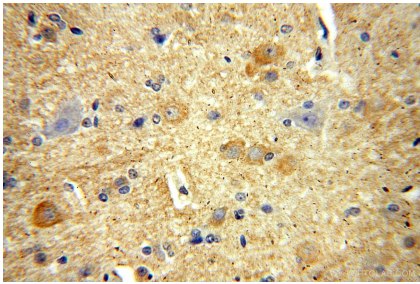
HeLa cells were subjected to SDS PAGE followed by western blot with 14701-1-AP (RPL19 antibody) at dilution of 1:500 incubated at room temperature for 1.5 hours.



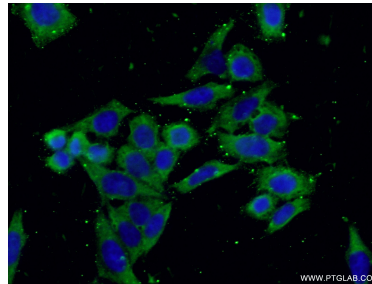
IP result of anti-RPL19 (IP:14701-1-AP, 4ug; Detection:14701-1-AP 1:3000) with HeLa cells lysate 1560 ug.



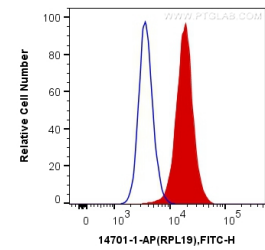
Immunohistochemical analysis of paraffin-embedded human brain using 14701-1-AP (RPL19 antibody) at dilution of 1:100 (under 10x lens).



Immunohistochemical analysis of paraffin-embedded human brain using 14701-1-AP (RPL19 antibody) at dilution of 1:100 (under 40x lens).



Immunofluorescent analysis of (-20°C Ethanol) fixed HeLa cells using 14701-1-AP (RPL19 antibody) at dilution of 1:50 and Alexa Fluor 488-conjugated AffiniPure Goat Anti-Rabbit IgG(H+L).



1X10<sup>6</sup> HeLa cells were intracellularly stained with 0.2 ug Anti-Human RPL19 (14701-1-AP) and CoraLite®488-Conjugated AffiniPure Goat Anti-Rabbit IgG(H+L) at dilution 1:1000 (red), or 0.2 ug Control Antibody. Cells were fixed with 4% PFA and permeabilized with Flow Cytometry Perm Buffer (PF00011-C).