

For Research Use Only

# KCNAB1 Polyclonal antibody

Catalog Number: 14697-1-AP



## Basic Information

Catalog Number:

14697-1-AP

Size:

750 ug/ml

Source:

Rabbit

Isotype:

IgG

Immunogen Catalog Number:

AG6339

GenBank Accession Number:

BC043166

GeneID (NCBI):

7881

UNIPROT ID:

Q14722

Full Name:

potassium voltage-gated channel,  
shaker-related subfamily, beta  
member 1

Calculated MW:

47 kDa

Observed MW:

68 kDa

Purification Method:

Antigen affinity purification

Recommended Dilutions:

WB 1:300-1:1500

IHC 1:20-1:200

IF/ICC 1:50-1:500

## Applications

Tested Applications:

WB, IHC, IF/ICC, ELISA

Species Specificity:

human, mouse, rat

**Note-IHC: suggested antigen retrieval with  
TE buffer pH 9.0; (\*) Alternatively, antigen  
retrieval may be performed with citrate  
buffer pH 6.0**

Positive Controls:

WB : mouse heart tissue, Neuro-2a cells

IHC : human brain tissue,

IF/ICC : HeLa cells,

## Background Information

### Storage

Storage:

Store at -20°C. Stable for one year after shipment.

Storage Buffer:

PBS with 0.02% sodium azide and 50% glycerol pH 7.3.

Aliquoting is unnecessary for -20°C storage

For technical support and original validation data for this product please contact:

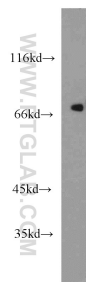
T: 4006900926

E: [Proteintech-CN@ptglab.com](mailto:Proteintech-CN@ptglab.com)

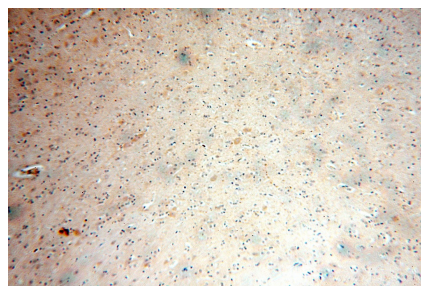
W: [ptgcn.com](http://ptgcn.com)

This product is exclusively available under Proteintech Group brand and is not available to purchase from any other manufacturer.

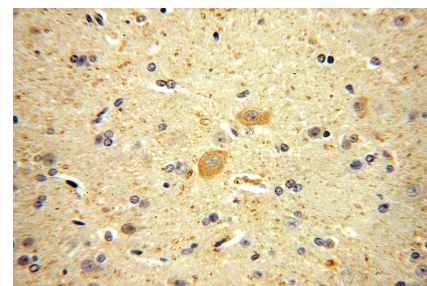
## Selected Validation Data



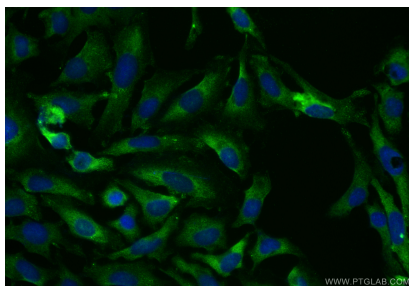
mouse heart tissue were subjected to SDS PAGE followed by western blot with 14697-1-AP (KCNAB1 antibody) at dilution of 1:1500 incubated at room temperature for 1.5 hours.



Immunohistochemical analysis of paraffin-embedded human brain using 14697-1-AP (KCNAB1 antibody) at dilution of 1:100 (under 10x lens).



Immunohistochemical analysis of paraffin-embedded human brain using 14697-1-AP (KCNAB1 antibody) at dilution of 1:100 (under 40x lens).



Immunofluorescent analysis of (-20°C Ethanol) fixed HeLa cells using KCNAB1 antibody (14697-1-AP) at dilution of 1:200 and CoraLite®488-Conjugated Goat Anti-Rabbit IgG(H+L) (SA00013-2).