

For Research Use Only

# SLC44A1 Polyclonal antibody

Catalog Number: 14687-1-AP **4 Publications**



## Basic Information

<b>Catalog Number:</b> 14687-1-AP	<b>GenBank Accession Number:</b> BC049203	<b>Purification Method:</b> Antigen affinity purification
<b>Size:</b> 600 µg/ml	<b>GeneID (NCBI):</b> 23446	<b>Recommended Dilutions:</b> WB 1:1000-1:4000 IHC 1:50-1:500
<b>Source:</b> Rabbit	<b>UNIPROT ID:</b> Q8WWI5	
<b>Isotype:</b> IgG	<b>Full Name:</b> solute carrier family 44, member 1	
<b>Immunogen Catalog Number:</b> AG6024	<b>Calculated MW:</b> 73 kDa	
	<b>Observed MW:</b> 70-73 kDa	

## Applications

<b>Tested Applications:</b> IHC, WB, ELISA	<b>Positive Controls:</b> WB : 37°C incubated HeLa cells, IHC : human lung cancer tissue,
<b>Cited Applications:</b> IF, IHC	
<b>Species Specificity:</b> human	
<b>Cited Species:</b> human, mouse	
<b>Note-IHC: suggested antigen retrieval with TE buffer pH 9.0; (*) Alternatively, antigen retrieval may be performed with citrate buffer pH 6.0</b>	

## Background Information

SLC44A1, also referred to as choline transporter-like protein 1 (CTL1) or CDw92, is a choline transporter detected in both the plasma and mitochondrial membranes where it transports choline at high affinity and in a Na<sup>+</sup>-independent manner.

## Notable Publications

Author	Pubmed ID	Journal	Application
Yalong Wang	31753849	J Exp Med	IF
Elsa Sanchez-Lopez	30982734	Cell Metab	IF
Bingjie Guan	37953237	BMC Cancer	IHC

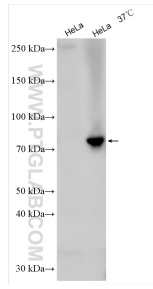
## Storage

**Storage:**  
Store at -20°C. Stable for one year after shipment.  
**Storage Buffer:**  
PBS with 0.02% sodium azide and 50% glycerol pH 7.3.  
Aliquoting is unnecessary for -20°C storage

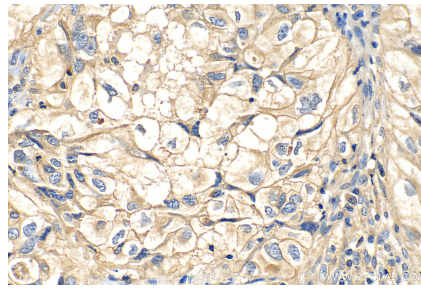
For technical support and original validation data for this product please contact:  
T: 4006900926 E: Proteintech-CN@ptglab.com W: ptgcn.com

This product is exclusively available under Proteintech Group brand and is not available to purchase from any other manufacturer.

## Selected Validation Data



HeLa lysates (heated at 100°C and 37°C) were subjected to SDS PAGE followed by western blot with 14687-1-AP (SLC44A1 antibody) at dilution of 1:2000 incubated at room temperature for 1.5 hours.



Immunohistochemical analysis of paraffin-embedded human lung cancer tissue slide using 14687-1-AP (SLC44A1 antibody) at dilution of 1:200 (under 40x lens). Heat mediated antigen retrieval with Tris-EDTA buffer (pH 9.0).