

For Research Use Only

# CRMP2 Polyclonal antibody

Catalog Number: 14686-1-AP

3 Publications



## Basic Information

### Catalog Number:

14686-1-AP

### Size:

1000 µg/ml

### Source:

Rabbit

### Isotype:

IgG

### Immunogen Catalog Number:

AG5985

### GenBank Accession Number:

BC056408

### GeneID (NCBI):

1808

### UNIPROT ID:

Q16555

### Full Name:

dihydropyrimidinase-like 2

### Calculated MW:

62 kDa

### Observed MW:

62-66 kDa

### Purification Method:

Antigen affinity purification

### Recommended Dilutions:

WB 1:500-1:2000

IHC 1:50-1:500

IF/ICC 1:200-1:800

## Applications

### Tested Applications:

WB, IHC, IF/ICC, ELISA

### Cited Applications:

WB, IF

### Species Specificity:

human, mouse, rat

### Cited Species:

human, mouse

**Note-IHC: suggested antigen retrieval with TE buffer pH 9.0; (\*) Alternatively, antigen retrieval may be performed with citrate buffer pH 6.0**

### Positive Controls:

WB : PC-12 cells, mouse brain tissue, rat brain tissue, SH-SY5Y cells

IHC : mouse brain tissue,

IF/ICC : HepG2 cells, SH-SY5Y cells

## Background Information

Dihydropyrimidinase-like 2 (Dpysl2), a protein involved in neuronal differentiation and axonal guidance is found altered in various nervous system diseases (PMID:19524114). It is also named as CRMP2, ULIP2 and belongs to hydantoinase/dihydropyrimidinase subfamily. The phosphorylation of the particular portion carboxyl-terminal to the basic region of DPYSL2 may play an important role in regulating its activity, and may be involved in the formation of degenerating neurites in AD brain (PMID:10757975).

## Notable Publications

Author	Pubmed ID	Journal	Application
Bingteng Xie	35648393	Cancer Res	IF
Yue Pan	38986818	Biochim Biophys Acta Mol Basis Dis	WB
Anna Laddach	37737269	Nat Commun	IF

## Storage

### Storage:

Store at -20°C. Stable for one year after shipment.

### Storage Buffer:

PBS with 0.02% sodium azide and 50% glycerol pH 7.3.

Aliquoting is unnecessary for -20°C storage

For technical support and original validation data for this product please contact:

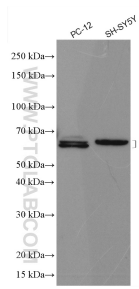
T: 4006900926

E: [Proteintech-CN@ptglab.com](mailto:Proteintech-CN@ptglab.com)

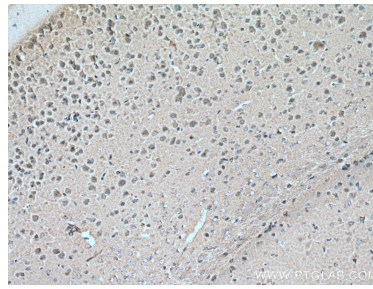
W: [ptgcn.com](http://ptgcn.com)

This product is exclusively available under Proteintech Group brand and is not available to purchase from any other manufacturer.

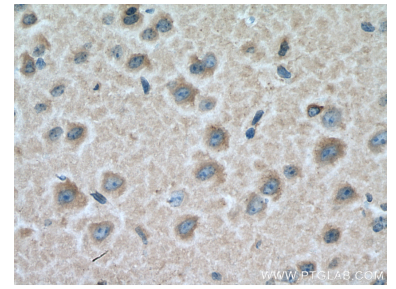
## Selected Validation Data



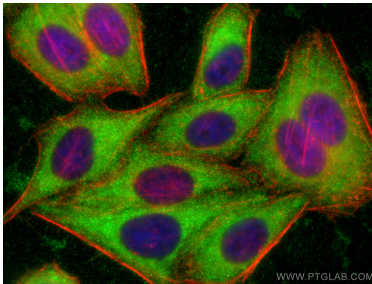
Various lysates were subjected to SDS PAGE followed by western blot with 14686-1-AP (CRMP2 antibody) at dilution of 1:1000 incubated at room temperature for 1.5 hours.



Immunohistochemical analysis of paraffin-embedded mouse brain tissue slide using 14686-1-AP (CRMP2 antibody) at dilution of 1:200 (under 10x lens). Heat mediated antigen retrieval with Tris-EDTA buffer (pH 9.0).



Immunohistochemical analysis of paraffin-embedded mouse brain tissue slide using 14686-1-AP (CRMP2 antibody) at dilution of 1:200 (under 40x lens). Heat mediated antigen retrieval with Tris-EDTA buffer (pH 9.0).



Immunofluorescent analysis of (-20°C Ethanol) fixed HepG2 cells using CRMP2 antibody (14686-1-AP) at dilution of 1:400 and CoraLite®488-Conjugated AffiniPure Goat Anti-Rabbit IgG(H+L) (SA00013-2), CL594-phalloidin (red).