

For Research Use Only

ELK4 Polyclonal antibody

Catalog Number: 14666-1-AP

3 Publications



Basic Information

Catalog Number:

14666-1-AP

Size:

300 µg/ml

Source:

Rabbit

Isotype:

IgG

Immunogen Catalog Number:

AG6273

GenBank Accession Number:

BC063676

GeneID (NCBI):

2005

UNIPROT ID:

P28324

Full Name:

ELK4, ETS-domain protein (SRF accessory protein 1)

Calculated MW:

47 kDa

Observed MW:

47 kDa

Purification Method:

Antigen affinity purification

Recommended Dilutions:

WB 1:500-1:2000

Applications

Tested Applications:

WB, ELISA

Cited Applications:

WB

Species Specificity:

human, mouse, rat

Cited Species:

human, mouse

Positive Controls:

WB: HeLa cells, Jurkat cells, MCF-7 cells, mouse liver tissue

Background Information

ELK4, also named as SAP1, SAP-1 and SAP1, belongs to the ETS family. It forms a ternary complex with the serum response factor (SRF). ELK4 requires DNA-bound SRF for ternary complex formation and makes extensive DNA contacts to the 5' side of SRF, but does not bind DNA autonomously. It is androgen regulated, involved in promoting cell growth, and highly expressed in a subset of prostate cancer. (PMID:19293179)

Notable Publications

Author	Pubmed ID	Journal	Application
Xiaoyan Zhang	36556251	J Pers Med	WB
Weiguo Xu	34497772	Front Oncol	WB
Haiming Yang	39173777	Brain Res Bull	WB

Storage

Storage:

Store at -20°C. Stable for one year after shipment.

Storage Buffer:

PBS with 0.02% sodium azide and 50% glycerol pH 7.3.

Aliquoting is unnecessary for -20°C storage

For technical support and original validation data for this product please contact:

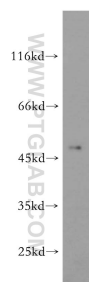
T: 4006900926

E: Proteintech-CN@ptglab.com

W: ptgcn.com

This product is exclusively available under Proteintech Group brand and is not available to purchase from any other manufacturer.

Selected Validation Data



HeLa cells were subjected to SDS PAGE followed by western blot with 14666-1-AP (ELK4 antibody) at dilution of 1:800 incubated at room temperature for 1.5 hours.