

For Research Use Only

LIN7C Polyclonal antibody

Catalog Number: 14656-1-AP **1 Publications**



Basic Information

Catalog Number:

14656-1-AP

Size:

500 µg/ml

Source:

Rabbit

Isotype:

IgG

Immunogen Catalog Number:

AG6265

GenBank Accession Number:

BC053907

GeneID (NCBI):

55327

UNIPROT ID:

Q9NUP9

Full Name:

lin-7 homolog C (C. elegans)

Calculated MW:

22 kDa

Observed MW:

25 kDa

Purification Method:

Antigen affinity purification

Recommended Dilutions:

WB 1:1000-1:4000

IF 1:50-1:500

Applications

Tested Applications:

IF/ICC, WB, ELISA

Cited Applications:

WB

Species Specificity:

human, mouse, rat

Cited Species:

rat

Positive Controls:

WB : human cerebellum tissue, human brain tissue, human kidney tissue

IF : HeLa cells,

Background Information

Notable Publications

Author	Pubmed ID	Journal	Application
Shi N N	23032931	Neuroscience	WB

Storage

Storage:

Store at -20°C. Stable for one year after shipment.

Storage Buffer:

PBS with 0.02% sodium azide and 50% glycerol pH 7.3.

Aliquoting is unnecessary for -20°C storage

For technical support and original validation data for this product please contact:

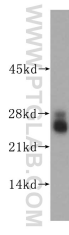
T: 4006900926

E: Proteintech-CN@ptglab.com

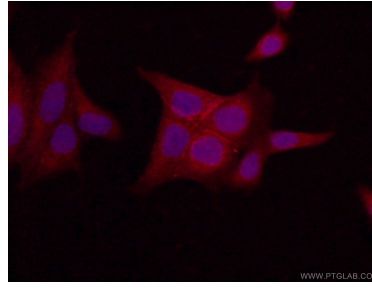
W: ptgcn.com

This product is exclusively available under Proteintech Group brand and is not available to purchase from any other manufacturer.

Selected Validation Data



human cerebellum tissue were subjected to SDS PAGE followed by western blot with 14656-1-AP (LIN7C antibody) at dilution of 1:800 incubated at room temperature for 1.5 hours.



Immunofluorescent analysis of (-20°C Ethanol) fixed HeLa cells using 14656-1-AP (LIN7C antibody) at dilution of 1:50 and Alexa Fluor 488-conjugated AffiniPure Goat Anti-Rabbit IgG(H+L).