

For Research Use Only

# TMPO/LAP2 Polyclonal antibody

Catalog Number: 14651-1-AP

Featured Product

10 Publications



## Basic Information

### Catalog Number:

14651-1-AP

### Concentration:

350 µg/ml

### Source:

Rabbit

### Isotype:

IgG

### Immunogen Catalog Number:

AG6247

### GenBank Accession Number:

BC053675

### GeneID (NCBI):

7112

### UNIPROT ID:

P42167

### Full Name:

thymopoietin

### Calculated MW:

51 kDa

### Observed MW:

75 kDa, 51 kDa and 39 kDa

### Purification Method:

Antigen affinity purification

### Recommended Dilutions:

WB: 1:500-1:2000

IP: 0.5-4.0 µg for 1.0-3.0 mg of total protein lysate

IHC: 1:50-1:500

IF/ICC: 1:200-1:800

## Applications

### Tested Applications:

WB, IHC, IF/ICC, IP, ELISA

### Cited Applications:

WB, IF

### Species Specificity:

human, mouse, rat

### Cited Species:

human, mouse, bovine

**Note-IHC: suggested antigen retrieval with TE buffer pH 9.0; (\*) Alternatively, antigen retrieval may be performed with citrate buffer pH 6.0**

### Positive Controls:

**WB**: HEK-293 cells, HSC-T6 cells, HeLa cells, HepG2 cells, MCF-7 cells

**IP**: HeLa cells,

**IHC**: human breast cancer tissue, human liver tissue, mouse lung tissue, human liver cancer tissue, mouse brain tissue, rat brain tissue

**IF/ICC**: HeLa cells,

## Background Information

TMPO resides in the nucleus and may play a role in the assembly of the nuclear lamina, and thus help maintain the structural organization of the nuclear envelope. It may function as a receptor for the attachment of lamin filaments to the inner nuclear membrane. TMPO gene encodes 3 thymopoietins: alpha (75 kD), beta (51 kD), and gamma (39 kD).

## Notable Publications

Author	Pubmed ID	Journal	Application
Xiao Ma	34593235	J Dairy Sci	WB
Lin Zhang	27756319	World J Surg Oncol	WB
Yuhua Fu	26603343	Sci Rep	WB

## Storage

### Storage:

Store at -20°C. Stable for one year after shipment.

### Storage Buffer:

PBS with 0.02% sodium azide and 50% glycerol, pH7.3

Aliquoting is unnecessary for -20°C storage

For technical support and original validation data for this product please contact:

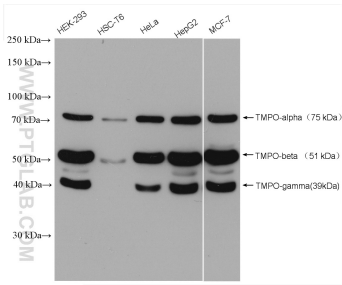
T: 4006900926

E: [Proteintech-CN@ptglab.com](mailto:Proteintech-CN@ptglab.com)

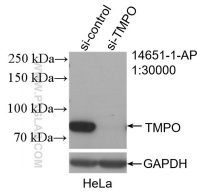
W: [ptgcn.com](http://ptgcn.com)

**This product is exclusively available under Proteintech Group brand and is not available to purchase from any other manufacturer.**

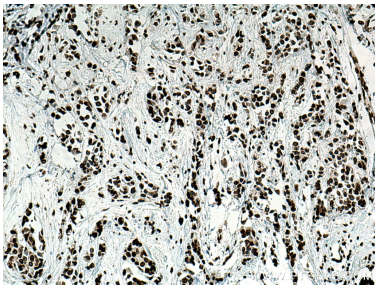
Selected Validation Data



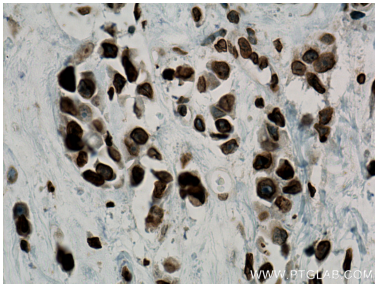
Various lysates were subjected to SDS PAGE followed by western blot with 14651-1-AP (TMPO/LAP2 antibody) at dilution of 1:1000 incubated at room temperature for 1.5 hours.



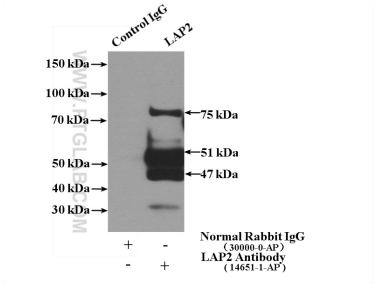
WB result of TMPO/LAP2 antibody (14651-1-AP; 1:30000; incubated at room temperature for 1.5 hours) with sh-Control and sh-TMPO/LAP2 transfected HeLa cells.



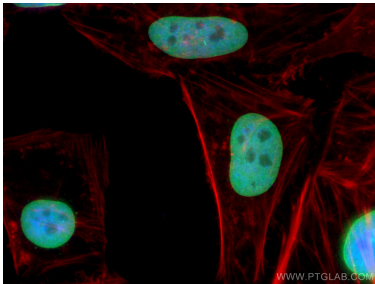
Immunohistochemical analysis of paraffin-embedded human breast cancer tissue slide using 14651-1-AP (TMPO/LAP2 antibody) at dilution of 1:200 (under 10x lens). Heat mediated antigen retrieval with Tris-EDTA buffer (pH 9.0).



Immunohistochemical analysis of paraffin-embedded human breast cancer tissue slide using 14651-1-AP (TMPO/LAP2 antibody) at dilution of 1:200 (under 40x lens). Heat mediated antigen retrieval with Tris-EDTA buffer (pH 9.0).



IP result of anti-TMPO/LAP2 (IP:14651-1-AP, 4ug; Detection:14651-1-AP 1:500) with HeLa cells lysate 1600ug.



Immunofluorescent analysis of (4% PFA) fixed HeLa cells using TMPO/LAP2 antibody (14651-1-AP) at dilution of 1:400 and CoraLite®488-Conjugated Goat Anti-Rabbit IgG(H+L), CL594-Phalloidin (red).