

For Research Use Only

# MPP3 Polyclonal antibody

Catalog Number: 14650-1-AP

Featured Product

2 Publications



## Basic Information

Catalog Number:

14650-1-AP

Size:

260 µg/ml

Source:

Rabbit

Isotype:

IgG

Immunogen Catalog Number:

AG6246

GenBank Accession Number:

BC056865

GeneID (NCBI):

4356

UNIPROT ID:

Q13368

Full Name:

membrane protein, palmitoylated 3  
(MAGUK p55 subfamily member 3)

Calculated MW:

66 kDa

Purification Method:

Antigen affinity purification

Recommended Dilutions:

IHC 1:20-1:200

## Applications

Tested Applications:

IHC, ELISA

Cited Applications:

IHC

Species Specificity:

human, mouse, rat

Cited Species:

mouse

**Note-IHC: suggested antigen retrieval with TE buffer pH 9.0; (\*) Alternatively, antigen retrieval may be performed with citrate buffer pH 6.0**

Positive Controls:

IHC : human lung cancer tissue,

## Background Information

MPP3, also named as DLG3, belongs to the MAGUK family which interact with the cytoskeleton and regulate cell proliferation, signaling pathways, and intracellular junctions. MPP3 plays an important role in signal transduction.

## Notable Publications

Author	Pubmed ID	Journal	Application
Park Bokyung B	22114289	J Neurosci	IHC
Dudok Jacobus J JJ	23658188	J Neurosci	IHC

## Storage

Storage:

Store at -20°C. Stable for one year after shipment.

Storage Buffer:

PBS with 0.02% sodium azide and 50% glycerol pH 7.3.

Aliquoting is unnecessary for -20°C storage

For technical support and original validation data for this product please contact:

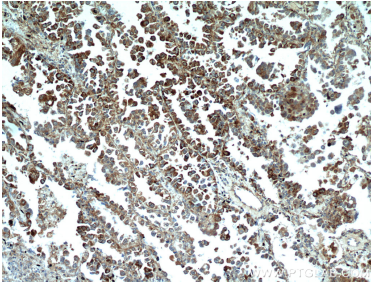
T: 4006900926

E: Proteintech-CN@ptglab.com

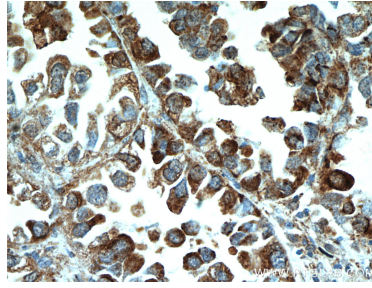
W: ptgcn.com

This product is exclusively available under Proteintech Group brand and is not available to purchase from any other manufacturer.

## Selected Validation Data



Immunohistochemical analysis of paraffin-embedded human lung cancer using 14650-1-AP (MPP3 antibody) at dilution of 1:50 (under 10x lens).



Immunohistochemical analysis of paraffin-embedded human lung cancer using 14650-1-AP (MPP3 antibody) at dilution of 1:50 (under 40x lens).