

For Research Use Only

RDH10 Polyclonal antibody

Catalog Number: 14644-1-AP

Featured Product

23 Publications



Basic Information

Catalog Number:

14644-1-AP

Source:

Rabbit

Isotype:

IgG

Immunogen Catalog Number:

AG6237

GenBank Accession Number:

BC067131

GeneID (NCBI):

157506

UNIPROT ID:

Q8IZV5

Full Name:

retinol dehydrogenase 10 (all-trans)

Calculated MW:

38 kDa

Observed MW:

39 kDa

Purification Method:

Antigen affinity purification

Recommended Dilutions:

WB: 1:1000-1:4000

IP: 0.5-4.0 ug for 1.0-3.0 mg of total protein lysate

IHC: 1:50-1:500

Applications

Tested Applications:

WB, IP, IHC, ELISA

Cited Applications:

WB, IHC, IF

Species Specificity:

human, mouse, rat

Cited Species:

human, mouse, rat, insect

Note-IHC: suggested antigen retrieval with TE buffer pH 9.0; (*) Alternatively, antigen retrieval may be performed with citrate buffer pH 6.0

Positive Controls:

WB : HepG2 cells, A549 cells, mouse liver tissue, mouse kidney tissue, rat kidney tissue

IP : mouse liver tissue,

IHC : mouse kidney tissue,

Background Information

RDH10(Retinol dehydrogenase 10) is a strictly NAD⁺-dependent enzyme with multisubstrate specificity that recognizes cis-retinols as well as all-trans-retinol as substrates. RDH10-mediated oxidation of retinol plays an important role in the control and regulation of RA production during embryogenesis as does the subsequent RALDH-mediated reaction(PMID: 22319578).

Notable Publications

Author	Pubmed ID	Journal	Application
Mark K. Adams	34542554	Biochem J	WB
Amy E Defnet	34784434	FASEB J	WB
Yunlu Xue	28539612	Sci Rep	WB

Storage

Storage:

Store at -20°C. Stable for one year after shipment.

Storage Buffer:

PBS with 0.02% sodium azide and 50% glycerol, pH7.3

Aliquoting is unnecessary for -20°C storage

For technical support and original validation data for this product please contact:

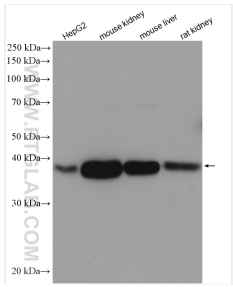
T: 4006900926

E: Proteintech-CN@ptglab.com

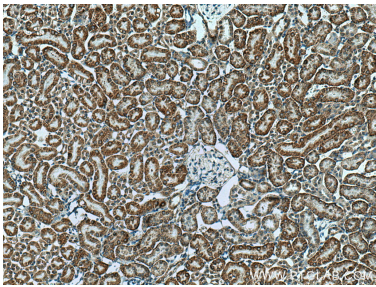
W: ptgcn.com

This product is exclusively available under Proteintech Group brand and is not available to purchase from any other manufacturer.

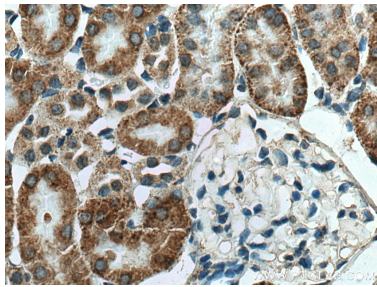
Selected Validation Data



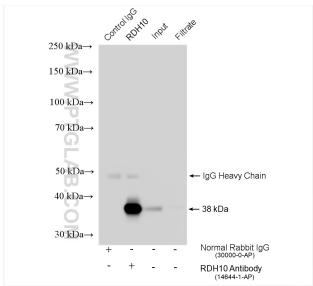
Various lysates were subjected to SDS PAGE followed by western blot with 14644-1-AP (RDH10 antibody) at dilution of 1:2000 incubated at room temperature for 1.5 hours.



Immunohistochemical analysis of paraffin-embedded mouse kidney tissue slide using 14644-1-AP (RDH10 antibody) at dilution of 1:200 (under 10x lens). Heat mediated antigen retrieval with Tris-EDTA buffer (pH 9.0).



Immunohistochemical analysis of paraffin-embedded mouse kidney tissue slide using 14644-1-AP (RDH10 antibody) at dilution of 1:200 (under 40x lens). Heat mediated antigen retrieval with Tris-EDTA buffer (pH 9.0).



IP result of anti-RDH10 (IP:14644-1-AP, 4ug; Detection:14644-1-AP 1:4000) with mouse liver tissue lysate 1840 ug.