

For Research Use Only

IGF2BP3 Polyclonal antibody

Catalog Number: 14642-1-AP

Featured Product

132 Publications



Basic Information

Catalog Number:

14642-1-AP

Concentration:

650 µg/ml

Source:

Rabbit

Isotype:

IgG

Immunogen Catalog Number:

AG6226

GenBank Accession Number:

BC065269

GeneID (NCBI):

10643

UNIPROT ID:

O00425

Full Name:

insulin-like growth factor 2 mRNA
binding protein 3

Calculated MW:

64 kDa

Observed MW:

64 kDa

Purification Method:

Antigen affinity purification

Recommended Dilutions:

WB 1:2000-1:10000

IP 0.5-4.0 µg for 1.0-3.0 mg of total
protein lysate

IHC 1:50-1:500

IF/ICC 1:10-1:100

Applications

Tested Applications:

WB, IHC, IF/ICC, IP, ELISA

Cited Applications:

WB, IHC, IF, IP, CoIP, RIP

Species Specificity:

human, mouse

Cited Species:

human, mouse, rat, pig

**Note-IHC: suggested antigen retrieval with
TE buffer pH 9.0; (*) Alternatively, antigen
retrieval may be performed with citrate
buffer pH 6.0**

Positive Controls:

WB : HEK-293 cells, HeLa cells, HepG2 cells, mouse
brain tissue, mouse placenta tissue, BxPC-3 cells,
NIH/3T3 cells

IP : HEK-293 cells,

IHC : human pancreas tissue,

IF/ICC : MCF-7 cells,

Background Information

IGF2BP3, also named IMP3, KOC1, and VICKZ3, belongs to the RRM IMP/VICKZ family. It is one of the RNA binding proteins involved in mRNA localization and translational control. IGF2BP3 is expressed during embryogenesis, as well as in some malignant tumors. It can be used as an independent prognostic factor for osteosarcoma. Both isoforms (64kd and 22kd) of IGF2BP3 can be recognized by this antibody. And IGF2BP3 is nuclear and cytoplasm stains.

Notable Publications

Author	Pubmed ID	Journal	Application
Zhou Yang	32993738	J Exp Clin Cancer Res	WB, IHC
Reschke Markus M	24055062	Cell Rep	WB
Yaru Zhang	32926933	Life Sci	WB

Storage

Storage:

Store at -20°C. Stable for one year after shipment.

Storage Buffer:

PBS with 0.02% sodium azide and 50% glycerol pH 7.3.

Aliquoting is unnecessary for -20°C storage

For technical support and original validation data for this product please contact:

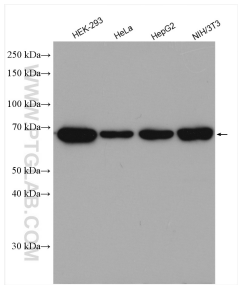
T: 4006900926

E: Proteintech-CN@ptglab.com

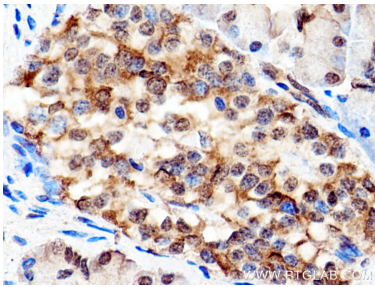
W: ptgcn.com

This product is exclusively available under Proteintech Group brand and is not available to purchase from any other manufacturer.

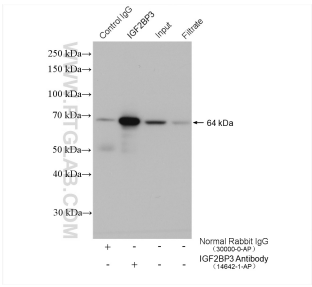
Selected Validation Data



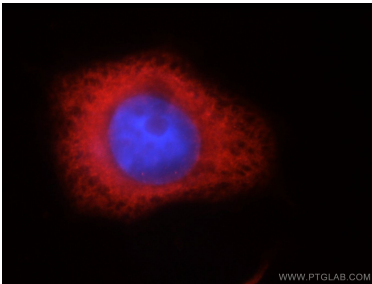
Various lysates were subjected to SDS PAGE followed by western blot with 14642-1-AP (IGF2BP3 antibody) at dilution of 1:5000 incubated at room temperature for 1.5 hours.



Immunohistochemical analysis of paraffin-embedded human pancreas tissue slide using 14642-1-AP (IGF2BP3 antibody) at dilution of 1:200 (under 40x lens). Heat mediated antigen retrieval with Tris-EDTA buffer (pH 9.0).



IP result of anti-IGF2BP3 (IP:14642-1-AP, 5ug; Detection:14642-1-AP 1:2000) with HEK-293 cells lysate 1040 ug.



Immunofluorescent analysis of MCF-7 cells, using IGF2BP3 antibody 14642-1-AP at 1:25 dilution and Rhodamine-labeled goat anti-rabbit IgG (red). Blue pseudocolor = DAPI (fluorescent DNA dye).