

For Research Use Only

# SIN3A Polyclonal antibody

Catalog Number: 14638-1-AP

5 Publications



## Basic Information

Catalog Number:

14638-1-AP

Size:

800 ug/ml

Source:

Rabbit

Isotype:

IgG

Immunogen Catalog Number:

AG6219

GenBank Accession Number:

BC066364

GeneID (NCBI):

25942

UNIPROT ID:

Q96ST3

Full Name:

SIN3 homolog A, transcription regulator (yeast)

Calculated MW:

145 kDa

Observed MW:

150 kDa

Purification Method:

Antigen affinity purification

Recommended Dilutions:

WB 1:500-1:1000

IP 0.5-4.0 ug for 1.0-3.0 mg of total protein lysate

IF/ICC 1:400-1:1600

## Applications

Tested Applications:

WB, IF/ICC, IP, ELISA

Cited Applications:

WB, IP, CoIP

Species Specificity:

human, mouse, rat

Cited Species:

human, mouse, rat

Positive Controls:

WB : Jurkat cells, HEK-293 cells, HeLa cells, K-562 cells

IP : Jurkat cells,

IF/ICC : HepG2 cells,

## Background Information

### Notable Publications

Author	Pubmed ID	Journal	Application
Ti-Chun Chan	33052246	Theranostics	WB
Kai Qu	35342333	Int J Biol Sci	WB, CoIP
Miaomei Yu	38978801	Bioact Mater	WB

## Storage

Storage:

Store at -20°C. Stable for one year after shipment.

Storage Buffer:

PBS with 0.02% sodium azide and 50% glycerol pH 7.3.

Aliquoting is unnecessary for -20°C storage

For technical support and original validation data for this product please contact:

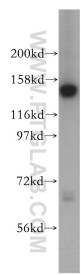
T: 4006900926

E: [Proteintech-CN@ptglab.com](mailto:Proteintech-CN@ptglab.com)

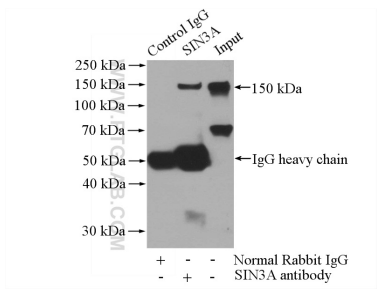
W: [ptgcn.com](http://ptgcn.com)

This product is exclusively available under Proteintech Group brand and is not available to purchase from any other manufacturer.

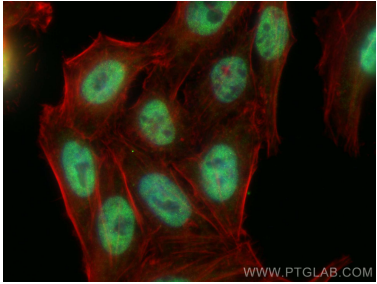
## Selected Validation Data



Jurkat cells were subjected to SDS PAGE followed by western blot with 14638-1-AP (SIN3A antibody) at dilution of 1:500 incubated at room temperature for 1.5 hours.



IP result of anti-SIN3A (IP:14638-1-AP, 4ug; Detection:14638-1-AP 1:500) with Jurkat cells lysate 3600ug.



Immunofluorescent analysis of (4% PFA) fixed HepG2 cells using SIN3A antibody (14638-1-AP) at dilution of 1:800 and CoraLite®488-Conjugated AffiniPure Goat Anti-Rabbit IgG(H+L) (SA00013-2), CL594-phalloidin (red).