

For Research Use Only

# PPP1R15B Polyclonal antibody

Catalog Number: 14634-1-AP

Featured Product

25 Publications



## Basic Information

### Catalog Number:

14634-1-AP

### Size:

600 µg/ml

### Source:

Rabbit

### Isotype:

IgG

### Immunogen Catalog Number:

AG6213

### GenBank Accession Number:

BC065280

### GeneID (NCBI):

84919

### UNIPROT ID:

Q5SWA1

### Full Name:

protein phosphatase 1, regulatory (inhibitor) subunit 15B

### Calculated MW:

79 kDa

### Observed MW:

100-110 kDa

### Purification Method:

Antigen affinity purification

### Recommended Dilutions:

WB 1:5000-1:50000

IP 0.5-4.0 µg for 1.0-3.0 mg of total protein lysate

IHC 1:200-1:800

IF/ICC 1:200-1:800

## Applications

### Tested Applications:

WB, IHC, IF/ICC, IP, ELISA

### Cited Applications:

WB, IF, IP, ColP

### Species Specificity:

human, mouse, rat

### Cited Species:

human, mouse

### Positive Controls:

WB : A2780 cells, MCF-7 cells, HEK-293 cells, SGC-7901 cells, MDA-MB-231 cells, SKOV-3 cells

IP : MCF-7 cells,

IHC : mouse brain tissue, mouse cerebellum tissue

IF/ICC : SH-SY5Y cells, HepG2 cells

**Note-IHC: suggested antigen retrieval with TE buffer pH 9.0; (\*) Alternatively, antigen retrieval may be performed with citrate buffer pH 6.0**

## Background Information

Protein phosphatase 1 regulatory subunit 15B(PPP1R15B) is a member of PPP1R15 family, it forms a complex with protein phosphatase1(PP1) and NCK1/2, maintaining low levels of EIF2S1 phosphorylation in unstressed cells, thus is also named constitutive repressor of eIF2alpha phosphorylation (CReP). PPP1R15B is associated in endoplasmic reticulum (ER) stress response resulting to a role in translation regulation. Knock-down of PPP1R15B strongly protected mammalian cells against oxidative stress, peroxynitrite stress, and more modestly against accumulation of malformed proteins in the ER. Recently, PPP1R15B was found to associate with cell membranes and regulate membrane traffic in a PP1c-independent manner, suggesting a novel link between translation and traffic. MW of PPP1R15B is 80 kDa. Observed MW of PPP1R15B is from 100-110 kDa maybe due to phosphorylation (PMID: 28492545).

## Notable Publications

Author	Pubmed ID	Journal	Application
Rebecca R Miles	34597669	J Biol Chem	WB
Kyle Friend	26406898	PLoS One	WB
Kloft Nicole N	22915583	J Biol Chem	WB, ColP

## Storage

### Storage:

Store at -20°C. Stable for one year after shipment.

### Storage Buffer:

PBS with 0.02% sodium azide and 50% glycerol pH 7.3.

Aliquoting is unnecessary for -20°C storage

For technical support and original validation data for this product please contact:

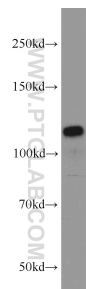
T: 4006900926

E: [Proteintech-CN@ptglab.com](mailto:Proteintech-CN@ptglab.com)

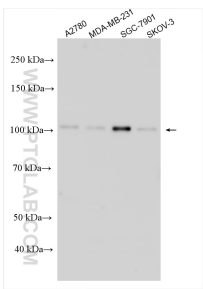
W: [ptgcn.com](http://ptgcn.com)

**This product is exclusively available under Proteintech Group brand and is not available to purchase from any other manufacturer.**

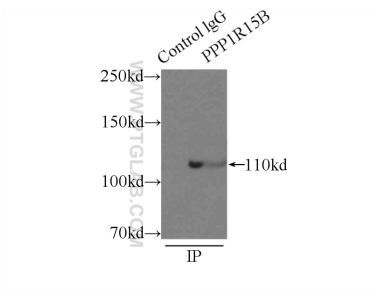
Selected Validation Data



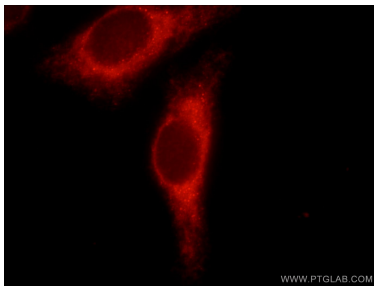
SGC-7901 cells were subjected to SDS PAGE followed by western blot with 14634-1-AP (PPP1R15B antibody) at dilution of 1:1000 incubated at room temperature for 1.5 hours.



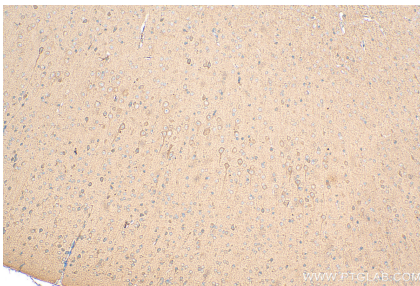
Various lysates were subjected to SDS PAGE followed by western blot with 14634-1-AP (PPP1R15B antibody) at dilution of 1:15000 incubated at room temperature for 1.5 hours.



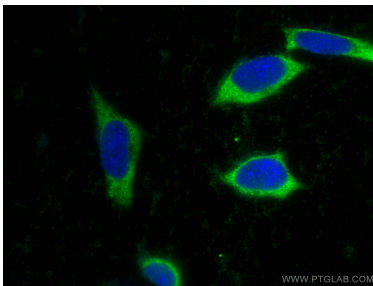
IP result of anti-PPP1R15B (IP:14634-1-AP, 3ug; Detection:14634-1-AP 1:1000) with MCF-7 cells lysate 2500ug.



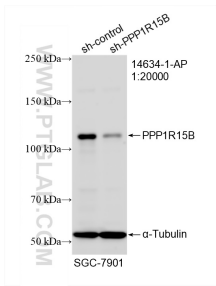
Immunofluorescent analysis of HepG2 cells using 14634-1-AP (PPP1R15B antibody) at dilution of 1:50 and Rhodamine-labeled goat anti-rabbit IgG .



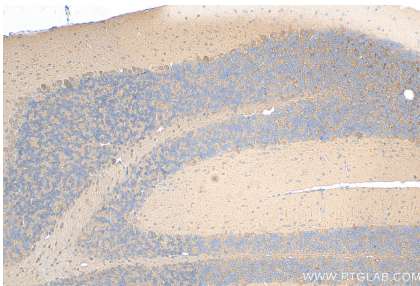
Immunohistochemical analysis of paraffin-embedded mouse brain tissue slide using 14634-1-AP (PPP1R15B antibody) at dilution of 1:400 (under 10x lens). Heat mediated antigen retrieval with Tris-EDTA buffer (pH 9.0).



Immunofluorescent analysis of (-20°C Ethanol) fixed SH-SY5Y cells using PPP1R15B antibody (14634-1-AP) at dilution of 1:400 and CoraLite®488-Conjugated Goat Anti-Rabbit IgG(H+L).



WB result of PPP1R15B antibody (14634-1-AP; 1:20000; incubated at room temperature for 1.5 hours) with sh-Control and sh-PPP1R15B transfected SGC-7901 cells.



Immunohistochemical analysis of paraffin-embedded mouse cerebellum tissue slide using 14634-1-AP (PPP1R15B antibody) at dilution of 1:400 (under 10x lens). Heat mediated antigen retrieval with Tris-EDTA buffer (pH 9.0).