

# RMI1 Polyclonal antibody

Catalog Number: 14630-1-AP

Featured Product

8 Publications

## Basic Information

## Catalog Number:

14630-1-AP

## Size:

500 µg/ml

## Source:

Rabbit

## Isotype:

IgG

## Immunogen Catalog Number:

AG6208

## GenBank Accession Number:

BC064937

## GeneID (NCBI):

80010

## UNIPROT ID:

Q9H9A7

## Full Name:

RMI1, RecQ mediated genome instability 1, homolog (S. cerevisiae)

## Calculated MW:

70 kDa

## Observed MW:

75 kDa

## Purification Method:

Antigen affinity purification

## Recommended Dilutions:

WB 1:2000-1:12000

IP 0.5-4.0 µg for 1.0-3.0 mg of total protein lysate

IHC 1:50-1:500

## Applications

## Tested Applications:

WB, IP, IHC, ELISA

## Cited Applications:

WB, IF

## Species Specificity:

human

## Cited Species:

human

## Positive Controls:

WB : HeLa cells, HepG2 cells, Jurkat cells

IP : HeLa cells,

IHC : human lung cancer tissue,

**Note-IHC: suggested antigen retrieval with TE buffer pH 9.0; (\*) Alternatively, antigen retrieval may be performed with citrate buffer pH 6.0**

## Background Information

RMI1 is an essential component of the RMI complex, a complex that plays an important role in the processing of homologous recombination intermediates to limit DNA crossover formation in cells. RMI1 promotes TOP3A binding to double Holliday junctions (DHJ) and hence stimulates TOP3A-mediated dissolution. RMI1 is required for BLM phosphorylation during mitosis. Within the BLM complex, RMI1 is required for BLM and TOP3A stability. (PMID: 16537486, PMID: 16595695, PMID: 15775963)

## Notable Publications

Author	Pubmed ID	Journal	Application
Chang Xu	29042194	Biochem Biophys Res Commun	WB
Yuxiao Sun	33202158	DNA Cell Biol	WB
Chang Xu	26556339	Int J Mol Sci	WB

## Storage

## Storage:

Store at -20°C. Stable for one year after shipment.

## Storage Buffer:

PBS with 0.02% sodium azide and 50% glycerol pH 7.3.

Aliquoting is unnecessary for -20°C storage

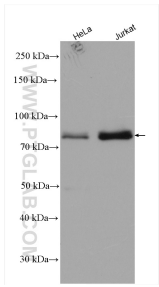
For technical support and original validation data for this product please contact:

T: 4006900926

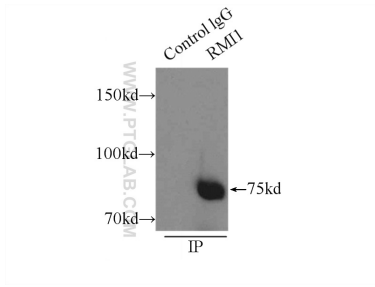
E: [Proteintech-CN@ptglab.com](mailto:Proteintech-CN@ptglab.com)W: [ptgcn.com](http://ptgcn.com)

**This product is exclusively available under Proteintech Group brand and is not available to purchase from any other manufacturer.**

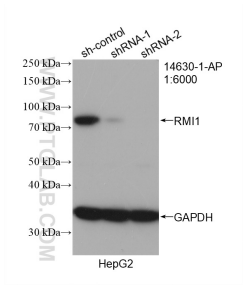
Selected Validation Data



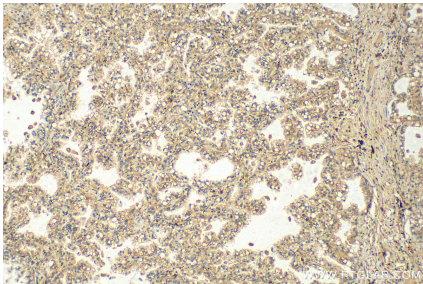
HeLa cells were subjected to SDS PAGE followed by western blot with 14630-1-AP (RMI1 antibody) at dilution of 1:6000 incubated at room temperature for 1.5 hours.



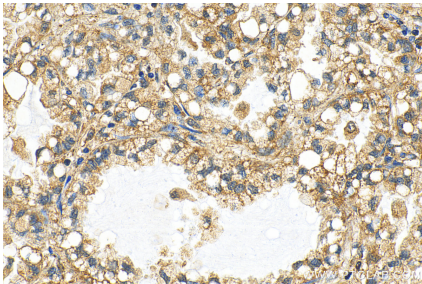
IP result of anti-RMI1 (IP:14630-1-AP, 3ug; Detection:14630-1-AP 1:1500) with HeLa cells lysate 3800ug.



WB result of RMI1 antibody (14630-1-AP; 1:6000; incubated at room temperature for 1.5 hours) with sh-Control and sh-RMI1 transfected HepG2 cells.



Immunohistochemical analysis of paraffin-embedded human lung cancer tissue slide using 14630-1-AP (RMI1 antibody) at dilution of 1:200 (under 10x lens). Heat mediated antigen retrieval with Tris-EDTA buffer (pH 9.0).



Immunohistochemical analysis of paraffin-embedded human lung cancer tissue slide using 14630-1-AP (RMI1 antibody) at dilution of 1:200 (under 40x lens). Heat mediated antigen retrieval with Tris-EDTA buffer (pH 9.0).