

RABEP2 Polyclonal antibody

Catalog Number: 14625-1-AP

7 Publications

Basic Information

Catalog Number:

14625-1-AP

Size:

900 µg/ml

Source:

Rabbit

Isotype:

IgG

Immunogen Catalog Number:

AG6197

GenBank Accession Number:

BC058900

GeneID (NCBI):

79874

UNIPROT ID:

Q9H5N1

Full Name:

rabaptin, RAB GTPase binding effector protein 2

Calculated MW:

64 kDa

Observed MW:

59-62 kDa

Purification Method:

Antigen affinity purification

Recommended Dilutions:

WB 1:500-1:2000

IP 0.5-4.0 µg for 1.0-3.0 mg of total protein lysate

IHC 1:400-1:1600

IF/ICC 1:200-1:800

Applications

Tested Applications:

WB, IHC, IF/ICC, IP, ELISA

Cited Applications:

WB, IF

Species Specificity:

human, mouse, rat

Cited Species:

human, mouse

Note-IHC: suggested antigen retrieval with TE buffer pH 9.0; (*) Alternatively, antigen retrieval may be performed with citrate buffer pH 6.0

Positive Controls:

WB: Jurkat cells, HeLa cells, mouse liver tissue

IP: mouse liver tissue,

IHC: human cervical cancer tissue, human prostate cancer tissue

IF/ICC: MCF-7 cells,

Background Information

RABEP2, also named as RABPT5B, plays a role in membrane trafficking and in homotypic early endosome fusion. It has two isoforms with MW 59-63 kDa.

Notable Publications

Author	Pubmed ID	Journal	Application
Han Kyu Lee	36167069	Am J Hum Genet	WB
Amir Aghajanian	33038388	J Mol Cell Cardiol	WB
Wen-Tao Wang	27809873	J Hematol Oncol	WB

Storage

Storage:

Store at -20°C. Stable for one year after shipment.

Storage Buffer:

PBS with 0.02% sodium azide and 50% glycerol pH 7.3.

Aliquoting is unnecessary for -20°C storage

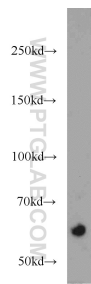
For technical support and original validation data for this product please contact:

T: 4006900926

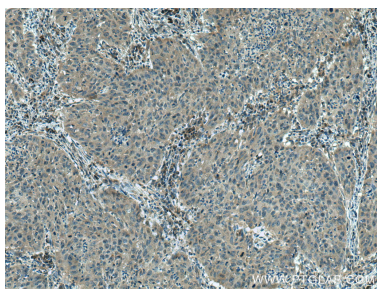
E: Proteintech-CN@ptglab.comW: ptgcn.com

This product is exclusively available under Proteintech Group brand and is not available to purchase from any other manufacturer.

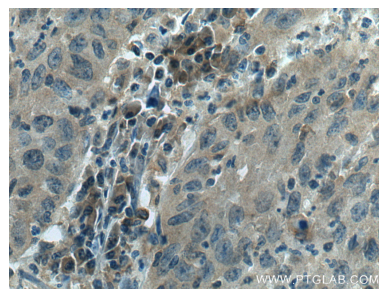
Selected Validation Data



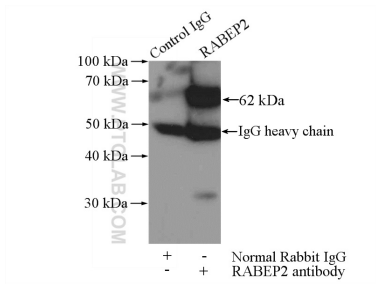
Jurkat cells were subjected to SDS PAGE followed by western blot with 14625-1-AP (RABEP2 antibody) at dilution of 1:1000 incubated at room temperature for 1.5 hours.



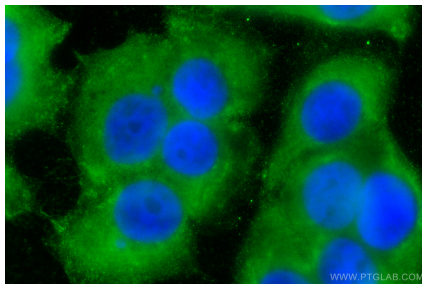
Immunohistochemical analysis of paraffin-embedded human cervical cancer tissue slide using 14625-1-AP (RABEP2 antibody) at dilution of 1:800 (under 10x lens). Heat mediated antigen retrieval with Tris-EDTA buffer (pH 9.0).



Immunohistochemical analysis of paraffin-embedded human cervical cancer tissue slide using 14625-1-AP (RABEP2 antibody) at dilution of 1:800 (under 40x lens). Heat mediated antigen retrieval with Tris-EDTA buffer (pH 9.0).



IP result of anti-RABEP2 (IP:14625-1-AP, 4ug; Detection:14625-1-AP 1:1000) with mouse liver tissue lysate 4000ug.



Immunofluorescent analysis of (-20°C Methanol) fixed MCF-7 cells using RABEP2 antibody (14625-1-AP) at dilution of 1:400 and CoraLite®488-Conjugated AffiniPure Goat Anti-Rabbit IgG(H+L).