

RBPJ Polyclonal antibody

Catalog Number: 14613-1-AP

Featured Product

14 Publications

Basic Information

Catalog Number:

14613-1-AP

Size:

260 µg/ml

Source:

Rabbit

Isotype:

IgG

Immunogen Catalog Number:

AG6206

GenBank Accession Number:

BC064976

GeneID (NCBI):

3516

UNIPROT ID:

Q06330

Full Name:

recombination signal binding protein
for immunoglobulin kappa J region

Calculated MW:

56 kDa

Observed MW:

60 kDa

Purification Method:

Antigen affinity purification

Recommended Dilutions:

WB 1:500-1:2000

IP 0.5-4.0 µg for 1.0-3.0 mg of total
protein lysate

IHC 1:20-1:200

Applications

Tested Applications:

IHC, IP, WB, ELISA

Cited Applications:

WB, IF, IHC

Species Specificity:

human, mouse

Cited Species:

human, mouse

**Note-IHC: suggested antigen retrieval with
TE buffer pH 9.0; (*) Alternatively, antigen
retrieval may be performed with citrate
buffer pH 6.0**

Positive Controls:

WB: mouse kidney tissue, HEK-293 cells, HeLa cells,
HepG2 cells, human heart tissue, human liver tissue,
MCF-7 cells, mouse pancreas tissue

IP: HEK-293 cells,

IHC: human pancreas cancer tissue,

Background Information

RBPJ, also named as IGKJRB, IGKJRB1, RBPJK, RBPSUH, NY-REN-30, CBF-1 and CSL, belongs to the Su(H) family. It is a transcriptional regulator that plays a central role in Notch signaling, a signaling pathway involved in cell-cell communication that regulates a broad spectrum of cell-fate determinations. RBPJ acts as a transcriptional repressor when it is not associated with Notch proteins. It is specifically binds to the immunoglobulin kappa-type J segment recombination signal sequence. RBPJ binds to the Runx3 promoter in the atrioventricular canal in vivo, and inhibition of Notch reduces RUNX3 expression in the cardiac cushion of embryonic hearts.

Notable Publications

Author	Pubmed ID	Journal	Application
Teng Teng Ren	34661679	Inflamm Res	WB
Xiaoxue Fang	36519753	J Ethnopharmacol	WB
C Pagliari	30418569	Med Mycol	IHC

Storage

Storage:

Store at -20°C. Stable for one year after shipment.

Storage Buffer:

PBS with 0.02% sodium azide and 50% glycerol pH 7.3.

Aliquoting is unnecessary for -20°C storage

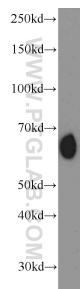
For technical support and original validation data for this product please contact:

T: 4006900926

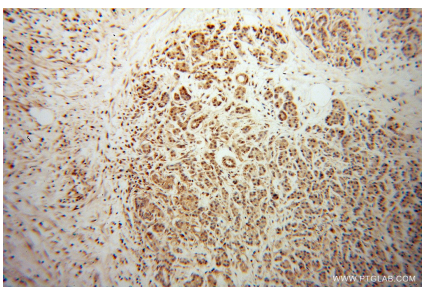
E: Proteintech-CN@ptglab.comW: ptgcn.com

**This product is exclusively available under Proteintech
Group brand and is not available to purchase from any
other manufacturer.**

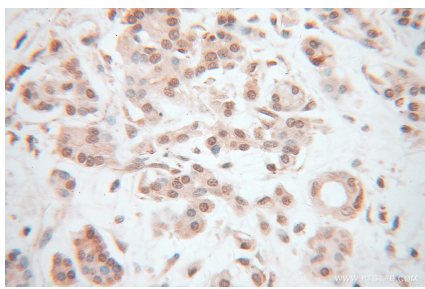
Selected Validation Data



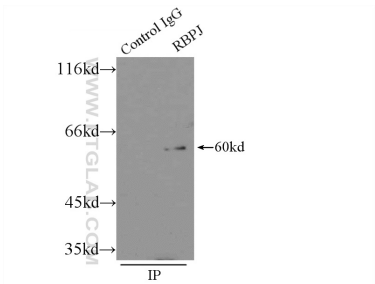
mouse kidney tissue were subjected to SDS PAGE followed by western blot with 14613-1-AP (RBPJ antibody) at dilution of 1:1000 incubated at room temperature for 1.5 hours.



Immunohistochemical analysis of paraffin-embedded human pancreas cancer using 14613-1-AP (RBPJ antibody) at dilution of 1:100 (under 10x lens).



Immunohistochemical analysis of paraffin-embedded human pancreas cancer using 14613-1-AP (RBPJ antibody) at dilution of 1:100 (under 40x lens).



IP result of anti-RBPJ (IP:14613-1-AP, 3ug; Detection:14613-1-AP 1:1000) with HEK-293 cells lysate 4500ug.