

For Research Use Only

LAP3 Polyclonal antibody

Catalog Number: 14612-1-AP **3 Publications**



Basic Information

Catalog Number: 14612-1-AP	GenBank Accession Number: BC065564	Purification Method: Antigen affinity purification
Size: 300 µg/ml	GeneID (NCBI): 51056	Recommended Dilutions: WB 1:500-1:1000 IHC 1:50-1:500
Source: Rabbit	UNIPROT ID: P28838	
Isotype: IgG	Full Name: leucine aminopeptidase 3	
Immunogen Catalog Number: AG6205	Calculated MW: 56 kDa	
	Observed MW: 56 kDa	

Applications

Tested Applications:
IHC, WB, ELISA

Cited Applications:
WB

Species Specificity:
human, mouse, rat

Cited Species:
human, mouse, rat

Note-IHC: suggested antigen retrieval with TE buffer pH 9.0; (*) Alternatively, antigen retrieval may be performed with citrate buffer pH 6.0

Positive Controls:

WB: HeLa cells, HepG2 cells, SH-SY5Y cells, mouse heart tissue, mouse spleen tissue, mouse lung tissue

IHC: human gliomas tissue,

Background Information

LAP3 (Leucine aminopeptidase 3) is also named as LAPEP, PEPS (peptidase S) and belongs to the peptidase M17 family. It can catalyze the removal of unsubstituted N-terminal amino-acids from various peptides and be presumably involved in the processing and regular turnover of intracellular proteins. PEPS is found in a wide variety of tissues and cultured cells but not in red cells and skin. The enzyme can utilize several di-, tri-, and tetrapeptides as substrates and is the slowest migrating of the peptidases after electrophoresis. (PMID:689684).

Notable Publications

Author	Pubmed ID	Journal	Application
Keisuke Kuhara	33893083	Cancer Genomics Proteomics	WB
Shaoping Huang	25656793	Reprod Toxicol	WB
Zhu Zijue Z	23262294	Int J Biochem Cell Biol	WB

Storage

Storage:
Store at -20°C. Stable for one year after shipment.
Storage Buffer:
PBS with 0.02% sodium azide and 50% glycerol pH 7.3.
Aliquoting is unnecessary for -20°C storage

For technical support and original validation data for this product please contact:

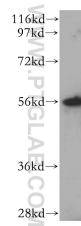
T: 4006900926

E: Proteintech-CN@ptglab.com

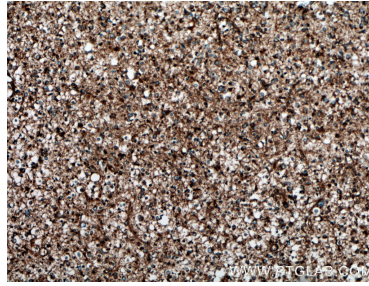
W: ptgcn.com

This product is exclusively available under Proteintech Group brand and is not available to purchase from any other manufacturer.

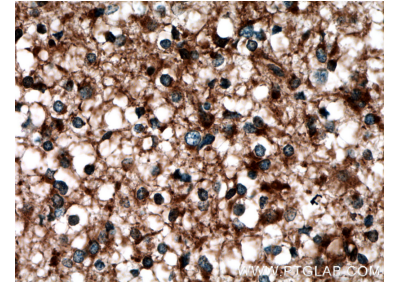
Selected Validation Data



HeLa cells were subjected to SDS PAGE followed by western blot with 14612-1-AP (LAP3 antibody) at dilution of 1:300 incubated at room temperature for 1.5 hours.



Immunohistochemical analysis of paraffin-embedded human gliomas tissue slide using 14612-1-AP (LAP3 antibody) at dilution of 1:200 (under 10x lens. Heat mediated antigen retrieval with Tris-EDTA buffer (pH 9.0).



Immunohistochemical analysis of paraffin-embedded human gliomas tissue slide using 14612-1-AP (LAP3 antibody) at dilution of 1:200 (under 40x lens. Heat mediated antigen retrieval with Tris-EDTA buffer (pH 9.0).