

For Research Use Only

PKN2 Polyclonal antibody

Catalog Number: 14608-1-AP

Featured Product

2 Publications



Basic Information

Catalog Number:

14608-1-AP

Size:

900 ug/ml

Source:

Rabbit

Isotype:

IgG

Immunogen Catalog Number:

AG6164

GenBank Accession Number:

BC062620

GeneID (NCBI):

5586

UNIPROT ID:

Q16513

Full Name:

protein kinase N2

Calculated MW:

112 kDa

Observed MW:

130 kDa

Purification Method:

Antigen affinity purification

Recommended Dilutions:

WB 1:500-1:3000

IP 0.5-4.0 ug for 1.0-3.0 mg of total protein lysate

IHC 1:200-1:1000

IF/ICC 1:10-1:100

Applications

Tested Applications:

WB, IHC, IF/ICC, FC (Intra), IP, ELISA

Cited Applications:

WB, IHC

Species Specificity:

human

Cited Species:

human, pig

Note-IHC: suggested antigen retrieval with TE buffer pH 9.0; (*) Alternatively, antigen retrieval may be performed with citrate buffer pH 6.0

Positive Controls:

WB: A2780 cells, K-562 cells, HeLa cells, HEK-293 cells, COLO 320 cells, SKOV-3 cells, HEK-293T cells

IP: COLO 320 cells,

IHC: human stomach tissue, human colon cancer tissue

IF/ICC: HepG2 cells, Hela cells

Background Information

Notable Publications

| Author | Pubmed ID | Journal | Application |
|--------------|-----------|--------------------|-------------|
| Liya Liu | 34663329 | Cancer Cell Int | WB |
| Maoliang Ran | 30024056 | Reprod Domest Anim | WB, IHC |

Storage

Storage:

Store at -20°C. Stable for one year after shipment.

Storage Buffer:

PBS with 0.02% sodium azide and 50% glycerol pH 7.3.

Aliquoting is unnecessary for -20°C storage

For technical support and original validation data for this product please contact:

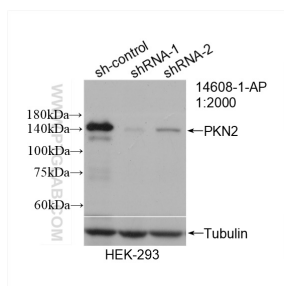
T: 4006900926

E: Proteintech-CN@ptglab.com

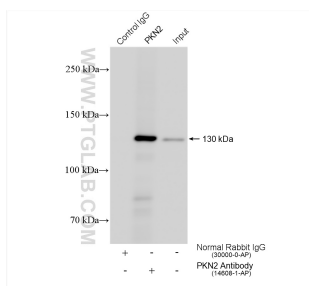
W: ptgcn.com

This product is exclusively available under Proteintech Group brand and is not available to purchase from any other manufacturer.

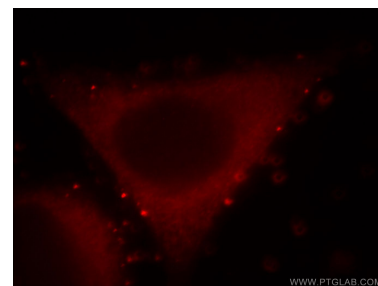
Selected Validation Data



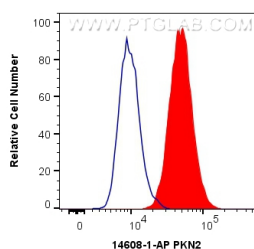
WB result of PKN2 antibody (14608-1-AP; 1:2000; incubated at room temperature for 1.5 hours) with sh-Control and sh-PKN2 transfected HEK-293 cells.



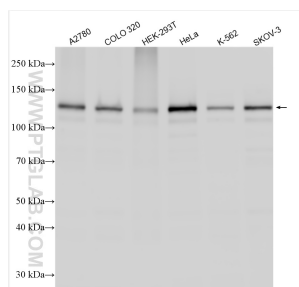
IP result of anti-PKN2 (IP: 14608-1-AP, 4ug; Detection: 14608-1-AP 1:1000) with COLO 320 cells lysate 2560 ug.



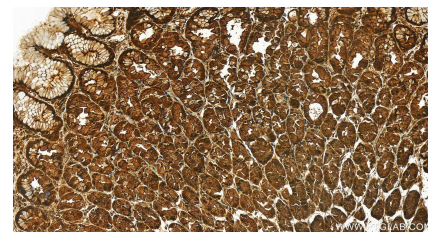
Immunofluorescent analysis of HepG2 cells, using PKN2 antibody 14608-1-AP at 1:25 dilution and Rhodamine-labeled goat anti-rabbit IgG (red).



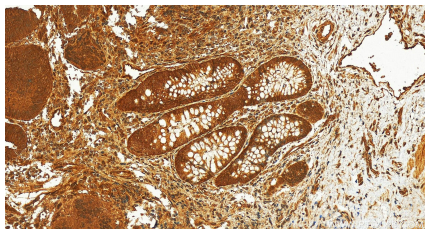
1X10⁶ HepG2 cells were intracellularly stained with 0.4 ug Anti-Human PKN2 (14608-1-AP) and CoraLite®488-Conjugated AffiniPure Goat Anti-Rabbit IgG(H+L) at dilution 1:1000 (red), or 0.4 ug Isotype Control. Cells were fixed with 4% PFA and permeabilized with Flow Cytometry Perm Buffer (PF00011-C).



Various lysates were subjected to SDS PAGE followed by western blot with 14608-1-AP (PKN2 antibody) at dilution of 1:1500 incubated at room temperature for 1.5 hours.



Immunohistochemical analysis of paraffin-embedded human stomach tissue slide using 14608-1-AP (PKN2 antibody) at dilution of 1:200 (under 20x lens). Heat mediated antigen retrieval with Tris-EDTA buffer (pH 9.0).



Immunohistochemical analysis of paraffin-embedded human colon cancer tissue slide using 14608-1-AP (PKN2 antibody) at dilution of 1:200 (under 20x lens). Heat mediated antigen retrieval with Sodium Citrate buffer (pH 6.0).