

For Research Use Only

HIBCH Polyclonal antibody

Catalog Number: 14603-1-AP

Featured Product

1 Publications



Basic Information

Catalog Number:

14603-1-AP

Concentration:

500 ug/ml

Source:

Rabbit

Isotype:

IgG

Immunogen Catalog Number:

AG6149

GenBank Accession Number:

BC067822

GeneID (NCBI):

26275

UNIPROT ID:

Q6NVY1

Full Name:

3-hydroxyisobutyryl-Coenzyme A
hydrolase

Calculated MW:

43 kDa

Observed MW:

38 kDa

Purification Method:

Antigen affinity purification

Recommended Dilutions:

WB 1:2000-1:10000

IHC 1:50-1:500

Applications

Tested Applications:

WB, IHC, ELISA

Cited Applications:

WB

Species Specificity:

human, mouse, rat

Cited Species:

human

**Note-IHC: suggested antigen retrieval with
TE buffer pH 9.0; (*) Alternatively, antigen
retrieval may be performed with citrate
buffer pH 6.0**

Positive Controls:

WB : HepG2 cells, mouse liver tissue, rat liver tissue

IHC : human liver cancer tissue,

Background Information

HIBCH belongs to the enoyl-CoA hydratase/isomerase family. HIBCH has two isoforms with MW 43 kDa and 38 kDa. It is highly expressed in the liver and kidney, also detected in the heart, muscle and brain (at protein level), but not detected in the lung. Hydrolyzes 3-hydroxyisobutyryl-CoA (HIBYL-CoA), a saline catabolite. Has high activity toward isobutyryl-CoA. Could be an isobutyryl-CoA dehydrogenase that functions in valine catabolism. Also hydrolyzes 3-hydroxypropanoyl-CoA (PMID: 8824301).

Notable Publications

Author	Pubmed ID	Journal	Application
Anne M Molloy	27132595	Am J Hum Genet	WB

Storage

Storage:

Store at -20°C. Stable for one year after shipment.

Storage Buffer:

PBS with 0.02% sodium azide and 50% glycerol pH 7.3.

Aliquoting is unnecessary for -20°C storage

For technical support and original validation data for this product please contact:

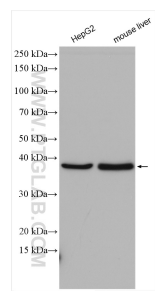
T: 4006900926

E: Proteintech-CN@ptglab.com

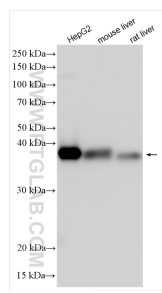
W: ptgcn.com

This product is exclusively available under Proteintech Group brand and is not available to purchase from any other manufacturer.

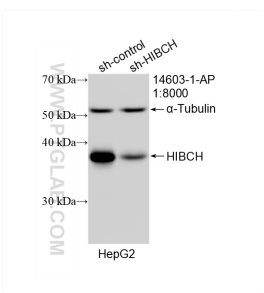
Selected Validation Data



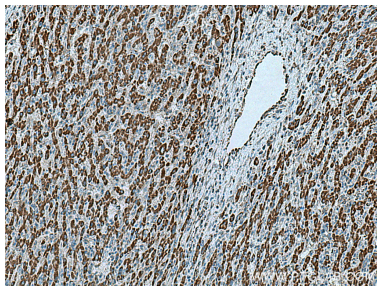
Various lysates were subjected to SDS PAGE followed by western blot with 14603-1-AP (HIBCH antibody) at dilution of 1:5000 incubated at room temperature for 1.5 hours.



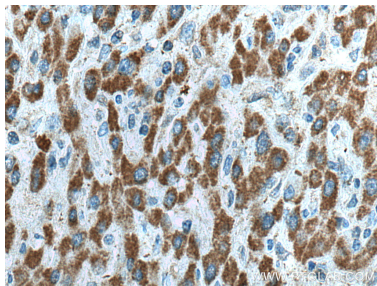
Various lysates were subjected to SDS PAGE followed by western blot with 14603-1-AP (HIBCH antibody) at dilution of 1:5000 incubated at room temperature for 1.5 hours.



WB result of HIBCH antibody (14603-1-AP; 1:8000; incubated at room temperature for 1.5 hours) with sh-Control and sh-HIBCH transfected HepG2 cells.



Immunohistochemical analysis of paraffin-embedded human liver cancer tissue slide using 14603-1-AP (HIBCH antibody) at dilution of 1:200 (under 10x lens). Heat mediated antigen retrieval with Tris-EDTA buffer (pH 9.0).



Immunohistochemical analysis of paraffin-embedded human liver cancer tissue slide using 14603-1-AP (HIBCH antibody) at dilution of 1:200 (under 40x lens). Heat mediated antigen retrieval with Tris-EDTA buffer (pH 9.0).