

For Research Use Only

JIP1/IB-1 Polyclonal antibody

Catalog Number: 14568-1-AP

7 Publications



Basic Information

Catalog Number:

14568-1-AP

Size:

800 ug/ml

Source:

Rabbit

Isotype:

IgG

Immunogen Catalog Number:

AG6150

GenBank Accession Number:

BC068470

GeneID (NCBI):

9479

UNIPROT ID:

Q9UQF2

Full Name:

mitogen-activated protein kinase 8 interacting protein 1

Calculated MW:

78 kDa

Observed MW:

97-116 kDa

Purification Method:

Antigen affinity purification

Recommended Dilutions:

WB 1:200-1:1000

IP 0.5-4.0 ug for 1.0-3.0 mg of total protein lysate

IHC 1:50-1:500

IF/ICC 1:200-1:800

Applications

Tested Applications:

WB, IHC, IF/ICC, IP, ELISA

Cited Applications:

WB, IF, IP

Species Specificity:

human, mouse, rat

Cited Species:

human, mouse

Note-IHC: suggested antigen retrieval with TE buffer pH 9.0; (*) Alternatively, antigen retrieval may be performed with citrate buffer pH 6.0

Positive Controls:

WB : fetal human brain tissue,

IP : mouse brain tissue, rat brain tissue

IHC : human oesophagus cancer tissue, mouse brain tissue, human pancreas tissue

IF/ICC : PC-12 cells,

Background Information

Notable Publications

Author	Pubmed ID	Journal	Application
Huixue Zhang	28977840	Oncotarget	WB
Changjiang Ying	34194338	Front Physiol	IP, WB
Lei Wu	32644793	ACS Chem Neurosci	IF

Storage

Storage:

Store at -20°C. Stable for one year after shipment.

Storage Buffer:

PBS with 0.02% sodium azide and 50% glycerol pH 7.3.

Aliquoting is unnecessary for -20°C storage

For technical support and original validation data for this product please contact:

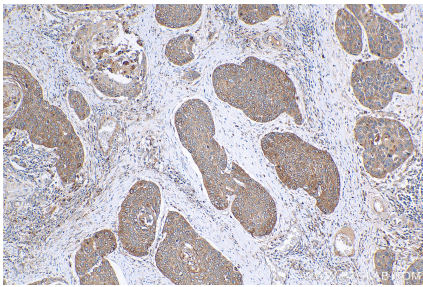
T: 4006900926

E: Proteintech-CN@ptglab.com

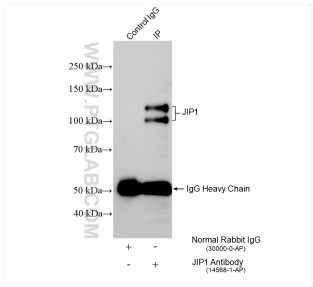
W: ptgcn.com

This product is exclusively available under Proteintech Group brand and is not available to purchase from any other manufacturer.

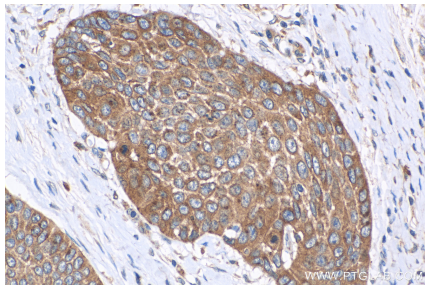
Selected Validation Data



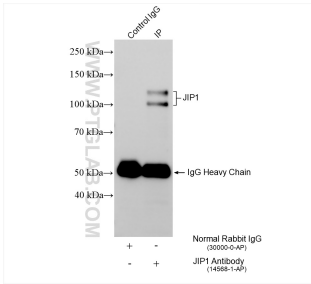
Immunohistochemical analysis of paraffin-embedded human oesophagus cancer tissue slide using 14568-1-AP (JIP1/IB-1 antibody) at dilution of 1:200 (under 10x lens). Heat mediated antigen retrieval with Tris-EDTA buffer (pH 9.0).



IP result of anti-JIP1/IB-1 (IP:14568-1-AP, 4ug; Detection:14568-1-AP 1:500) with mouse brain tissue lysate 1840 ug.



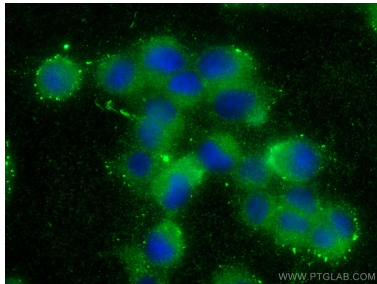
Immunohistochemical analysis of paraffin-embedded human oesophagus cancer tissue slide using 14568-1-AP (JIP1/IB-1 antibody) at dilution of 1:200 (under 40x lens). Heat mediated antigen retrieval with Tris-EDTA buffer (pH 9.0).



IP result of anti-JIP1/IB-1 (IP:14568-1-AP, 4ug; Detection:14568-1-AP 1:500) with rat brain tissue lysate 1120 ug.



fetal human brain tissue were subjected to SDS PAGE followed by western blot with 14568-1-AP (JIP1 Antibody) at dilution of 1:300 incubated at room temperature for 1.5 hours.



Immunofluorescent analysis of (-20°C Methanol) fixed PC-12 cells using JIP1/IB-1 antibody (14568-1-AP) at dilution of 1:400 and CoraLite®488-Conjugated AffiniPure Goat Anti-Rabbit IgG(H+L).