

For Research Use Only

RINT1 Polyclonal antibody

Catalog Number: 14567-1-AP

2 Publications



Basic Information

Catalog Number:

14567-1-AP

Size:

600 µg/ml

Source:

Rabbit

Isotype:

IgG

Immunogen Catalog Number:

AG6145

GenBank Accession Number:

BC068483

GeneID (NCBI):

60561

UNIPROT ID:

Q6NUQ1

Full Name:

RAD50 interactor 1

Calculated MW:

91 kDa

Observed MW:

87 kDa

Purification Method:

Antigen affinity purification

Recommended Dilutions:

WB 1:200-1:1000

IHC 1:20-1:200

IF/ICC 1:10-1:100

Applications

Tested Applications:

WB, IHC, IF/ICC, ELISA

Cited Applications:

WB, IF

Species Specificity:

human, mouse, rat

Cited Species:

human

Note-IHC: suggested antigen retrieval with TE buffer pH 9.0; (*) Alternatively, antigen retrieval may be performed with citrate buffer pH 6.0

Positive Controls:

WB : HepG2 cells,

IHC : human breast cancer tissue, human liver cancer tissue

IF/ICC : HepG2 cells,

Background Information

RINT-1 was first identified as a Rad50-interacting protein that participates in radiation-induced G2/M checkpoint control. It also involved in regulation of membrane traffic between the endoplasmic reticulum and the Golgi. It interacts with p130, an Rb family protein, and together they regulate the telomerase-independent telomere length. Otherwise, it interacts with Zeste white 10 with its N-terminal region throughout the cell cycle.

Notable Publications

Author	Pubmed ID	Journal	Application
Xiaoting Zhang	39430741	Front Immunol	WB
Robert S Kiss	37774976	J Biol Chem	IF

Storage

Storage:

Store at -20°C. Stable for one year after shipment.

Storage Buffer:

PBS with 0.02% sodium azide and 50% glycerol pH 7.3.

Aliquoting is unnecessary for -20°C storage

For technical support and original validation data for this product please contact:

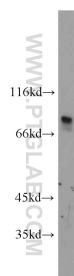
T: 4006900926

E: Proteintech-CN@ptglab.com

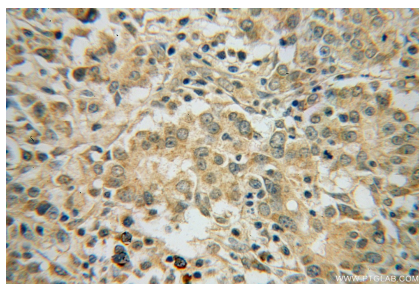
W: ptgcn.com

This product is exclusively available under Proteintech Group brand and is not available to purchase from any other manufacturer.

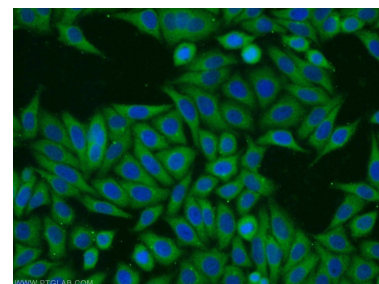
Selected Validation Data



HepG2 cells were subjected to SDS PAGE followed by western blot with 14567-1-AP (RINT1 antibody) at dilution of 1:500 incubated at room temperature for 1.5 hours.



Immunohistochemical analysis of paraffin-embedded human breast cancer using 14567-1-AP (RINT1 antibody) at dilution of 1:50 (under 40x lens).



Immunofluorescent analysis of HepG2 cells using 14567-1-AP (RINT1 antibody) at dilution of 1:25 and Alexa Fluor 488-conjugated Goat Anti-Rabbit IgG(H+L).