

For Research Use Only

# RBAP48 Polyclonal antibody

Catalog Number: 14557-1-AP



## Basic Information

<b>Catalog Number:</b> 14557-1-AP	<b>GenBank Accession Number:</b> BC053904	<b>Purification Method:</b> Antigen affinity purification
<b>Size:</b> 133 µg/ml	<b>GeneID (NCBI):</b> 5928	<b>Recommended Dilutions:</b> WB 1:500-1:2000 IHC 1:20-1:200 IF 1:50-1:500
<b>Source:</b> Rabbit	<b>UNIPROT ID:</b> Q09028	
<b>Isotype:</b> IgG	<b>Full Name:</b> retinoblastoma binding protein 4	
<b>Immunogen Catalog Number:</b> AG6110	<b>Calculated MW:</b> 48 kDa	
	<b>Observed MW:</b> 40 kDa, 48-53 kDa	

## Applications

**Tested Applications:**  
IF/ICC, IHC, WB, ELISA

**Species Specificity:**  
human, mouse, rat

**Note-IHC: suggested antigen retrieval with TE buffer pH 9.0; (\*) Alternatively, antigen retrieval may be performed with citrate buffer pH 6.0**

**Positive Controls:**

**WB:** HeLa cells, K-562 cells, mouse thymus tissue

**IHC:** human ovary tissue, human brain tissue, human kidney tissue, human lung tissue, human placenta tissue, human spleen tissue, human testis tissue

**IF:** HeLa cells,

## Background Information

### Storage

**Storage:**  
Store at -20°C. Stable for one year after shipment.  
**Storage Buffer:**  
PBS with 0.02% sodium azide and 50% glycerol pH 7.3.  
Aliquoting is unnecessary for -20°C storage

For technical support and original validation data for this product please contact:

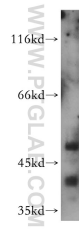
T: 4006900926

E: Proteintech-CN@ptglab.com

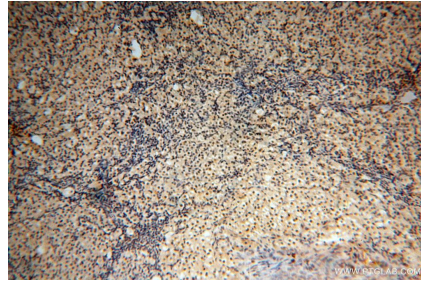
W: ptgcn.com

This product is exclusively available under Proteintech Group brand and is not available to purchase from any other manufacturer.

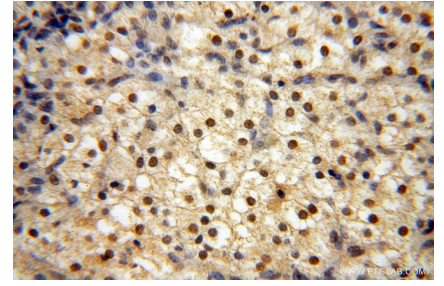
## Selected Validation Data



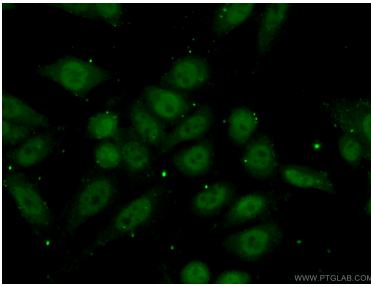
HeLa cells were subjected to SDS PAGE followed by western blot with 14557-1-AP (RBAP48 antibody) at dilution of 1:1000 incubated at room temperature for 1.5 hours.



Immunohistochemical analysis of paraffin-embedded human ovary using 14557-1-AP (RBAP48 antibody) at dilution of 1:50 (under 10x lens).



Immunohistochemical analysis of paraffin-embedded human ovary using 14557-1-AP (RBAP48 antibody) at dilution of 1:50 (under 40x lens).



Immunofluorescent analysis of (10% Formaldehyde) fixed HeLa cells using 14557-1-AP (RBAP48 antibody) at dilution of 1:50 and Alexa Fluor 488-conjugated AffiniPure Goat Anti-Rabbit IgG(H+L).