

For Research Use Only

C1s Polyclonal antibody

Catalog Number: 14554-1-AP

5 Publications



Basic Information

Catalog Number:

14554-1-AP

Size:

550 µg/ml

Source:

Rabbit

Isotype:

IgG

Immunogen Catalog Number:

AG5977

GenBank Accession Number:

BC056903

GeneID (NCBI):

716

UNIPROT ID:

P09871

Full Name:

complement component 1, s subcomponent

Calculated MW:

77 kDa

Observed MW:

88 kDa

Purification Method:

Antigen affinity purification

Recommended Dilutions:

WB 1:2000-1:16000

IHC 1:50-1:500

Applications

Tested Applications:

IHC, WB, ELISA

Cited Applications:

WB, IHC, IF

Species Specificity:

human, mouse, rat

Cited Species:

human, mouse

Note-IHC: suggested antigen retrieval with TE buffer pH 9.0; (*) Alternatively, antigen retrieval may be performed with citrate buffer pH 6.0

Positive Controls:

WB : rat plasma, human plasma

IHC : human liver cancer tissue, mouse liver tissue

Background Information

The first component of complement is a calcium-dependent complex of the 3 subcomponents C1q, C1r, and C1s. The serine protease subunits C1r and C1s form a Ca(2+)-dependent C1s-C1r-C1r-C1s tetramer. C1r activates C1s so that it can, in turn, activate C2 and C4. C1s is a glycoprotein of approximately 88 kDa, which is activated by cleavage into an A chain and a B chain.

Notable Publications

Author	Pubmed ID	Journal	Application
Diana Pauly	31775049	Cell Rep	WB,IF
Anne Kathrin Wessig	35296708	Sci Rep	WB
Anne Enzbrenner	34502128	Int J Mol Sci	IF

Storage

Storage:

Store at -20°C. Stable for one year after shipment.

Storage Buffer:

PBS with 0.02% sodium azide and 50% glycerol pH 7.3.

Aliquoting is unnecessary for -20°C storage

For technical support and original validation data for this product please contact:

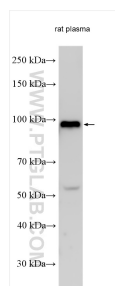
T: 4006900926

E: Proteintech-CN@ptglab.com

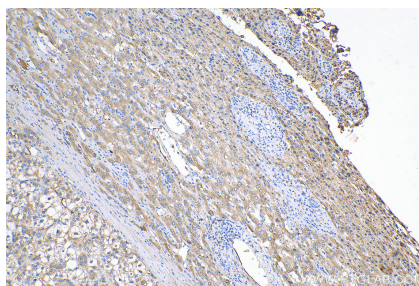
W: ptgcn.com

This product is exclusively available under Proteintech Group brand and is not available to purchase from any other manufacturer.

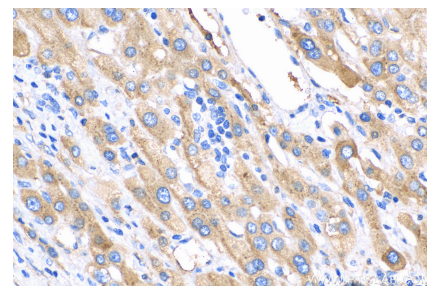
Selected Validation Data



rat plasma lysates were subjected to SDS PAGE followed by western blot with 14554-1-AP (C1S antibody) at dilution of 1:8000 incubated at room temperature for 1.5 hours.



Immunohistochemical analysis of paraffin-embedded human liver cancer tissue slide using 14554-1-AP (C1S antibody) at dilution of 1:200 (under 10x lens). Heat mediated antigen retrieval with Tris-EDTA buffer (pH 9.0).



Immunohistochemical analysis of paraffin-embedded human liver cancer tissue slide using 14554-1-AP (C1S antibody) at dilution of 1:200 (under 40x lens). Heat mediated antigen retrieval with Tris-EDTA buffer (pH 9.0).